

2005 4299

FILED
RECORDERS OFFICE
JONES COUNTY IOWA

05 NOV 29 AM 9:54

MARIE KRUTZFIELD
RECORDER NO FEE

SCOTCH GROVE

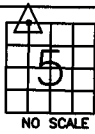
J.D. TJEPKES, LS. JONES COUNTY ENGINEER'S OFFICE, 19501 HWY. 64, ANAMOSA, IOWA, 52205 (319)462-3785

UNITED STATES PUBLIC LAND SURVEY CORNER CERTIFICATE

LAND SURVEY MONUMENTS SITUATED IN SECTION 5, TOWNSHIP 85
NORTH, RANGE 2 WEST OF THE 5TH P.M., JONES COUNTY, IOWA

CORNERS TO BE INDEXED

CORNER SECTION TOWNSHIP RANGE
NE-NW-NW 5 85N 2W

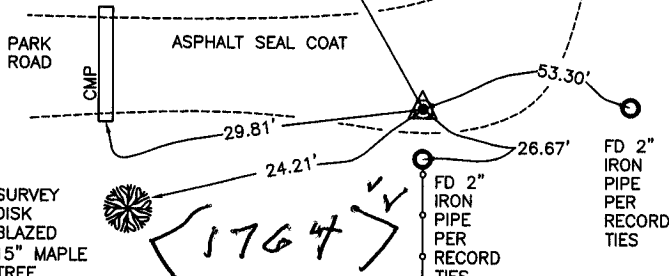


OFFICE FILE NO.

85205b_112205.tif

FIELD NOTES:
11-21-2005
MISC BOOK
2004-2005
PAGE 74

SET 5/8"x24"
REBAR
W/ORANGE CAP
#14807 FLUSH
W/ ASPHALT
NE COR NW-NW
SEC 5 T85N
R2W



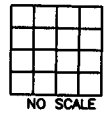
PREVIOUSLY RECORDED IN BOOK 312, PAGE 305

MONUMENT DESCRIPTION AND HOW ESTABLISHED

PER RECORD TIES AT JONES COUNTY RECORDER'S OFFICE BOOK 312 PAGE 305, RESET 5/8"x24" REBAR W/ORANGE CAP #14807 FLUSH WITH TOP OF ASPHALT. TIES AS INDICATED FOR NE CORNER NW1/4 NW1/4 SECTION 5 T85N R2W.

CORNERS TO BE INDEXED

CORNER SECTION TOWNSHIP RANGE



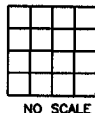
OFFICE FILE NO.

PREVIOUSLY RECORDED IN BOOK _____, PAGE _____

MONUMENT DESCRIPTION AND HOW ESTABLISHED _____

CORNERS TO BE INDEXED

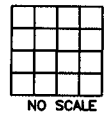
CORNER SECTION TOWNSHIP RANGE



OFFICE FILE NO.

CORNERS TO BE INDEXED

CORNER SECTION TOWNSHIP RANGE



OFFICE FILE NO.

PREVIOUSLY RECORDED IN BOOK _____, PAGE _____

PREVIOUSLY RECORDED IN BOOK _____, PAGE _____