

2005 4303

FILED
RECORDERS OFFICE
JONES COUNTY IOWA

05 NOV 29 AM 9:58

MARIE KRUTZFIELD
RECORDER NO FEE

RICHLAND

J.D. TJEPKES, LS. JONES COUNTY ENGINEER'S OFFICE, 19501 HWY. 64, ANAMOSA, IOWA, 52205 (319)462-3785

UNITED STATES PUBLIC LAND SURVEY CORNER CERTIFICATE

LAND SURVEY MONUMENTS SITUATED IN SECTION 31, TOWNSHIP 86
NORTH, RANGE 2 WEST OF THE 5TH P.M., JONES COUNTY, IOWA

CORNERS TO BE INDEXED

CORNER SECTION TOWNSHIP RANGE
SE 31 86N 2W

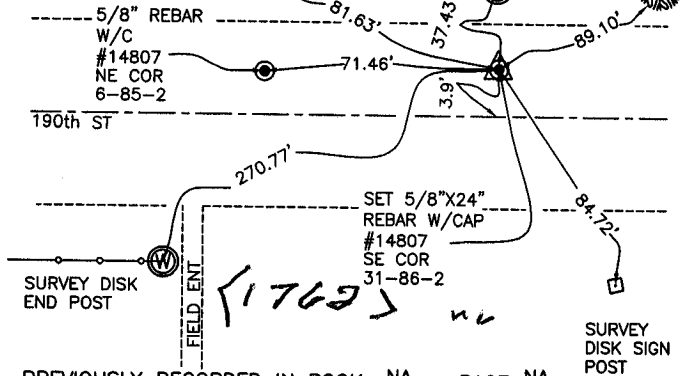
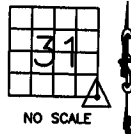
OFFICE FILE NO.
86231y_112305.tif

FIELD NOTES:
11-21-2005
MISC BOOK
2004-2005
P 75

SURVEY
DISK
POWER
POLE

SURVEY
DISK
END
POST

SURVEY
DISK
PINE
TREE



PREVIOUSLY RECORDED IN BOOK NA, PAGE NA
MONUMENT DESCRIPTION AND HOW ESTABLISHED
DUG AND FOUND 5/8" IRON PIN PER TIES ON RECORD AT JONES COUNTY
RECORDER'S OFFICE. SET 5/8"x24" REBAR W/ORANGE CAP #14807 FLUSH
WITH TOP OF NEW ASPHALT. TIES AS INDICATED FOR SE CORNER SECTION
31 T86N R2W.

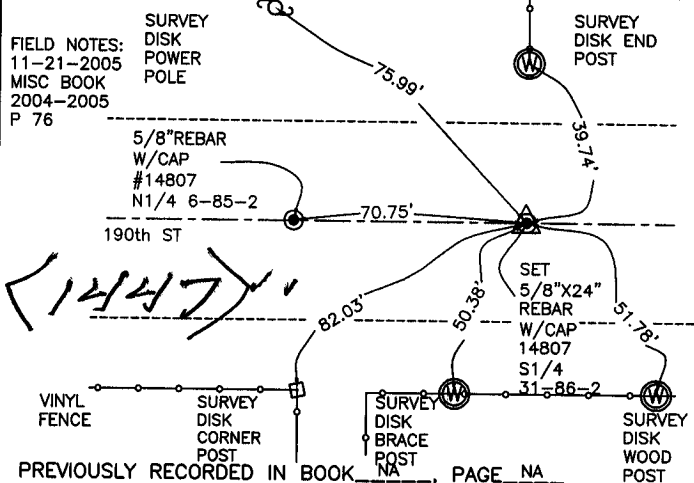
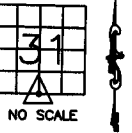
CORNERS TO BE INDEXED

CORNER SECTION TOWNSHIP RANGE
S1/4 31 86N 2W

OFFICE FILE NO.
86231w_112305.tif

FIELD NOTES:
11-21-2005
MISC BOOK
2004-2005
P 76

SURVEY
DISK
POWER
POLE

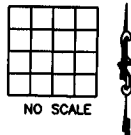


PREVIOUSLY RECORDED IN BOOK NA, PAGE NA
MONUMENT DESCRIPTION AND HOW ESTABLISHED
PER OLD TIES AND PLAT OF SURVEY RECORDED AT JONES COUNTY
RECORDER'S OFFICE IN PLAT BK "0" P 190, FOUND BROKEN PK NAIL. SET
5/8"x24" REBAR W/ORANGE CAP #14807 FLUSH WITH NEW ASPHALT. TIES
AS INDICATED FOR S1/4 CORNER SECTION 31 T86N R2W.

CORNERS TO BE INDEXED

CORNER SECTION TOWNSHIP RANGE

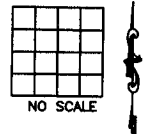
OFFICE FILE NO.



CORNERS TO BE INDEXED

CORNER SECTION TOWNSHIP RANGE

OFFICE FILE NO.



2005 4300

FILED
RECORDERS OFFICE
JONES COUNTY IOWA

05 NOV 29 AM 9:55

MARIE KRUTZFIELD
RECORDER NO FEE

SCOTCH GROVE

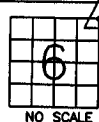
J.D. TJEPKES, LS. JONES COUNTY ENGINEER'S OFFICE, 19501 HWY. 64, ANAMOSA, IOWA, 52205 (319)462-3785

UNITED STATES PUBLIC LAND SURVEY CORNER CERTIFICATE

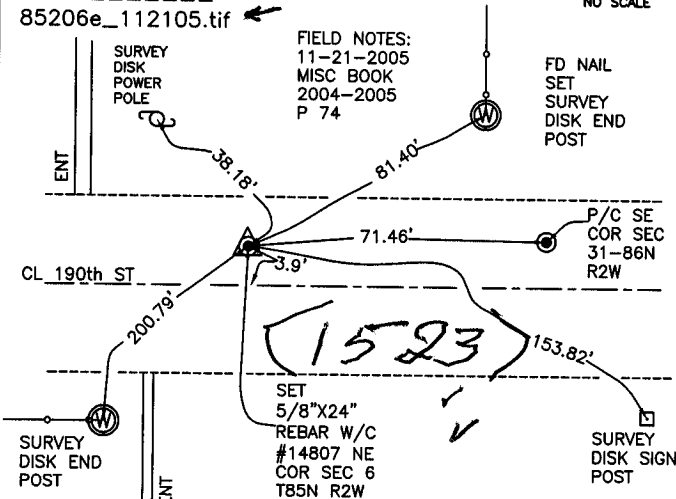
LAND SURVEY MONUMENTS SITUATED IN SECTION 6, TOWNSHIP 85
NORTH, RANGE 2 WEST OF THE 5TH P.M., JONES COUNTY, IOWA

CORNERS TO BE INDEXED

CORNER SECTION TOWNSHIP RANGE
NE 6 85N 2W



OFFICE FILE NO. 85206e_112105.tif



FIELD NOTES:
11-21-2005
MISC BOOK
2004-2005
P 74

FD NAIL
SET
SURVEY
DISK END
POST

P/C SE
COR SEC
31-86N
R2W

SET
5/8"X24"
REBAR W/C
#14807
NE
COR SEC 6
T85N R2W

SURVEY
DISK SIGN
POST

PREVIOUSLY RECORDED IN BOOK NA, PAGE NA

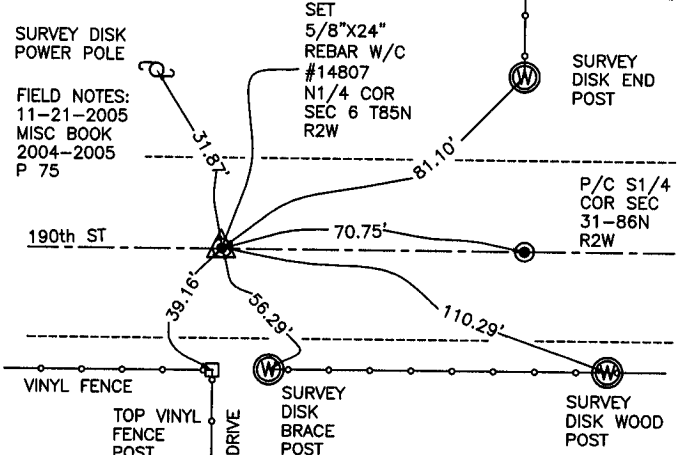
MONUMENT DESCRIPTION AND HOW ESTABLISHED
PER OLD TIES AND PLAT OF SURVEY ON RECORD AT JONES COUNTY
RECORDER'S OFFICE, DUG THROUGH ASPHALT AND FOUND 5/8" REBAR
BURIED 6". SET 5/8"X24" REBAR W/ORANGE CAP #14807 FLUSH WITH TOP
OF NEW ASPHALT. TIES AS INDICATED FOR NORTHEAST CORNER SECTION 6
T85N R2W.

CORNERS TO BE INDEXED

CORNER SECTION TOWNSHIP RANGE
N1/4 6 85N 2W



OFFICE FILE NO. 85206c_112105.tif



SET
5/8"X24"
REBAR W/C
#14807
N1/4 COR
SEC 6 T85N
R2W

SURVEY
DISK END
POST

P/C S1/4
COR SEC
31-86N
R2W

VINYL FENCE
TOP VINYL
FENCE
POST

DRIVE

SURVEY
DISK
BRACE
POST

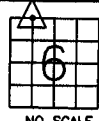
SURVEY
DISK WOOD
POST

PREVIOUSLY RECORDED IN BOOK NA, PAGE NA

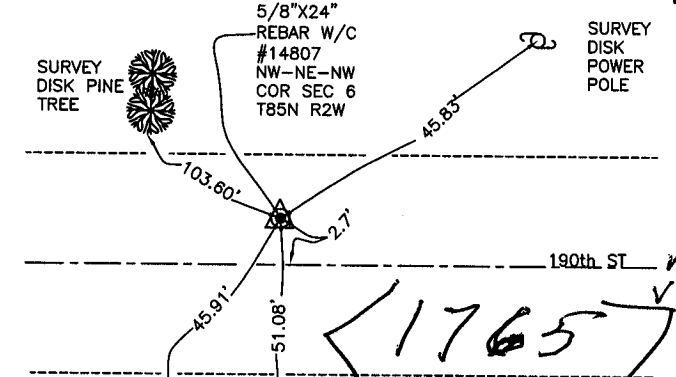
MONUMENT DESCRIPTION AND HOW ESTABLISHED
PER PLAT AND OLD TIES ON RECORD AT JONES COUNTY ENGINEER'S OFFICE,
FOUND 1/2" PIN AND CAP #11310. SET 5/8"X24" REBAR W/ORANGE CAP
#14807 FLUSH WITH TOP OF NEW ASPHALT. TIES AS INDICATED FOR N1/4
CORNER SECTION 6 T85N R2W.

CORNERS TO BE INDEXED

CORNER SECTION TOWNSHIP RANGE
NW-NE-NW 6 85N 2W



OFFICE FILE NO. 85206b_112105.tif



SET
5/8"X24"
REBAR W/C
#14807
NW-NE-NW
COR SEC 6
T85N R2W

SURVEY
DISK
POWER
POLE

SURVEY
DISK PINE
TREE

190th ST

SURVEY
DISK WOOD
POST

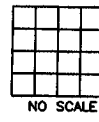
TOP
VINYL
CORNER
POST

FIELD NOTES:
11-21-2005
MISC BOOK
2004-2005
P 76

PREVIOUSLY RECORDED IN BOOK NA, PAGE NA

CORNERS TO BE INDEXED

CORNER SECTION TOWNSHIP RANGE



OFFICE FILE NO. _____

THIS IS NOT A CERTIFICATION

G

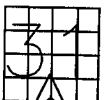
JONES COUNTY ENGINEER'S OFFICE, 19501 HWY. 64, ANAMOSA, IOWA, 52205 (319)462-3785

UNITED STATES PUBLIC LAND SURVEY CORNER CERTIFICATE

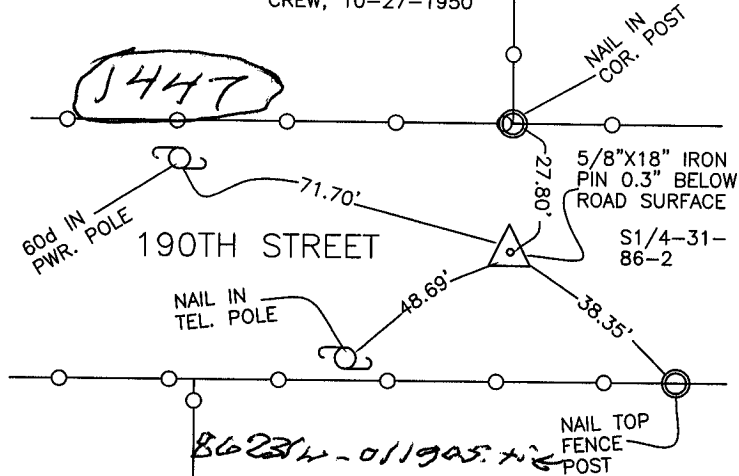
LAND SURVEY MONUMENTS SITUATED IN SECTION 31, TOWNSHIP 86
NORTH, RANGE 2 WEST OF THE 5TH P.M., JONES COUNTY, IOWA

CORNERS TO BE INDEXED

CORNER SECTION TOWNSHIP RANGE
S-QUARTER 31 86N 2W
OFFICE FILE NO. 86231w_081904.tif
REF: JONES COUNTY SURVEY CREW, 10-27-1950



NO SCALE

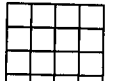


PREVIOUSLY RECORDED IN BOOK _____, PAGE _____
MONUMENT DESCRIPTION AND HOW ESTABLISHED SET OR FOUND

NOT INDICATED ON TIE SHEET. 5/8"X18" IRON PIN 0.3' BELOW ROAD TOP. JONES COUNTY SURVEY CREW SET TIE POINTS. SOUTH QUARTER CORNER SECTION 31, TOWNSHIP 86 NORTH, RANGE 2 WEST OF THE 5TH PRINCIPAL MERIDIAN, JONES COUNTY, IOWA.

CORNERS TO BE INDEXED

CORNER SECTION TOWNSHIP RANGE
OFFICE FILE NO. _____



NO SCALE

PREVIOUSLY RECORDED IN BOOK _____, PAGE _____
MONUMENT DESCRIPTION AND HOW ESTABLISHED _____

CORNERS TO BE INDEXED

CORNER SECTION TOWNSHIP RANGE
OFFICE FILE NO. _____

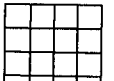


NO SCALE

PREVIOUSLY RECORDED IN BOOK _____, PAGE _____
MONUMENT DESCRIPTION AND HOW ESTABLISHED _____

CORNERS TO BE INDEXED

CORNER SECTION TOWNSHIP RANGE
OFFICE FILE NO. _____



NO SCALE

PREVIOUSLY RECORDED IN BOOK _____, PAGE _____
MONUMENT DESCRIPTION AND HOW ESTABLISHED _____

~~I hereby declare that this plat, survey or report was made by me or under my direct personal supervision and that I am a duly registered Land Surveyor under the laws of the State of Iowa.~~

Signed: _____

SEAL

JONES COUNTY
ENGINEER'S OFFICE

19501 HWY. 64,
ANAMOSA, IOWA,
52205 (319)462-3785