

2005 4303

FILED
RECORDERS OFFICE
JONES COUNTY IOWA

05 NOV 29 AM 9:58

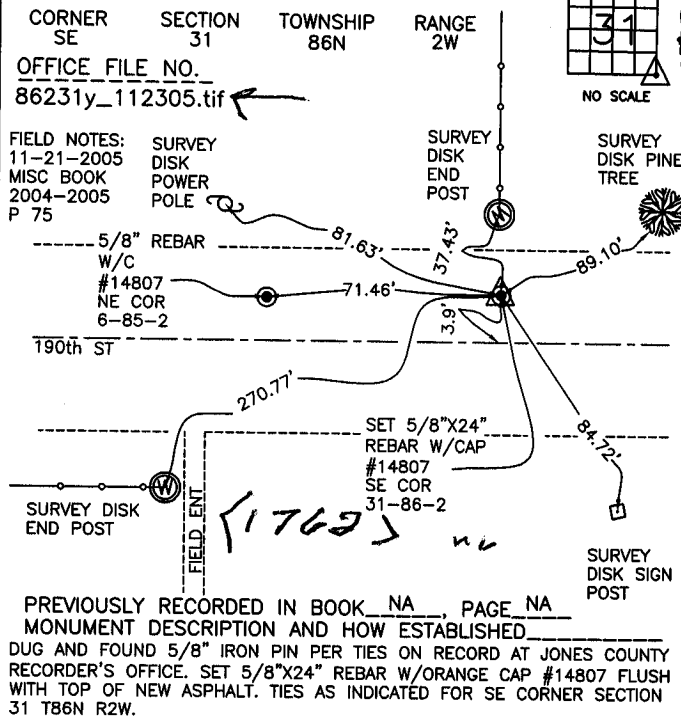
MARIE KRUTZFIELD
RECORDER NO FEE

RICHLAND

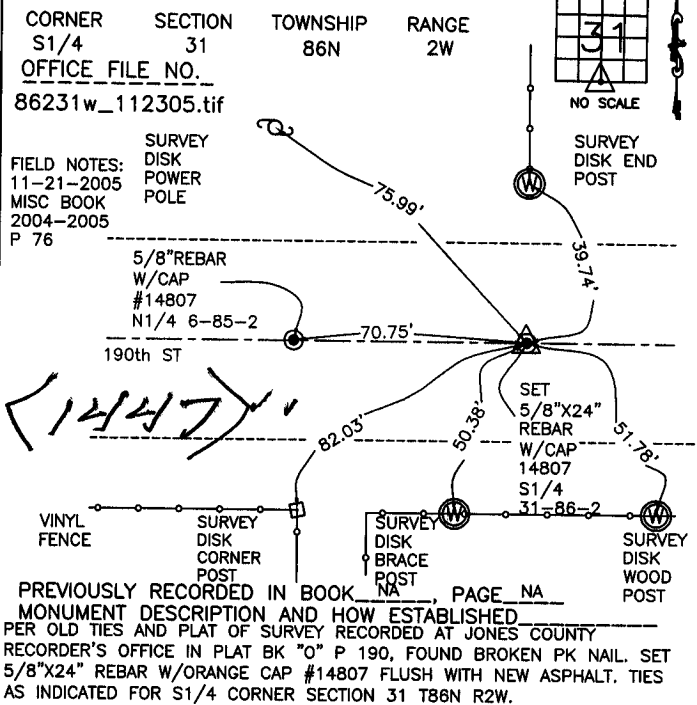
J.D. TJEPKES, LS. JONES COUNTY ENGINEER'S OFFICE, 19501 HWY. 64, ANAMOSA, IOWA, 52205 (319)462-3785

UNITED STATES PUBLIC LAND
SURVEY CORNER CERTIFICATELAND SURVEY MONUMENTS SITUATED IN SECTION 31, TOWNSHIP 86
NORTH, RANGE 2 WEST OF THE 5TH P.M., JONES COUNTY, IOWA

CORNERS TO BE INDEXED



CORNERS TO BE INDEXED



CORNERS TO BE INDEXED

CORNER SECTION TOWNSHIP RANGE

OFFICE FILE NO.

NO SCALE

CORNERS TO BE INDEXED

CORNER SECTION TOWNSHIP RANGE

OFFICE FILE NO.

NO SCALE

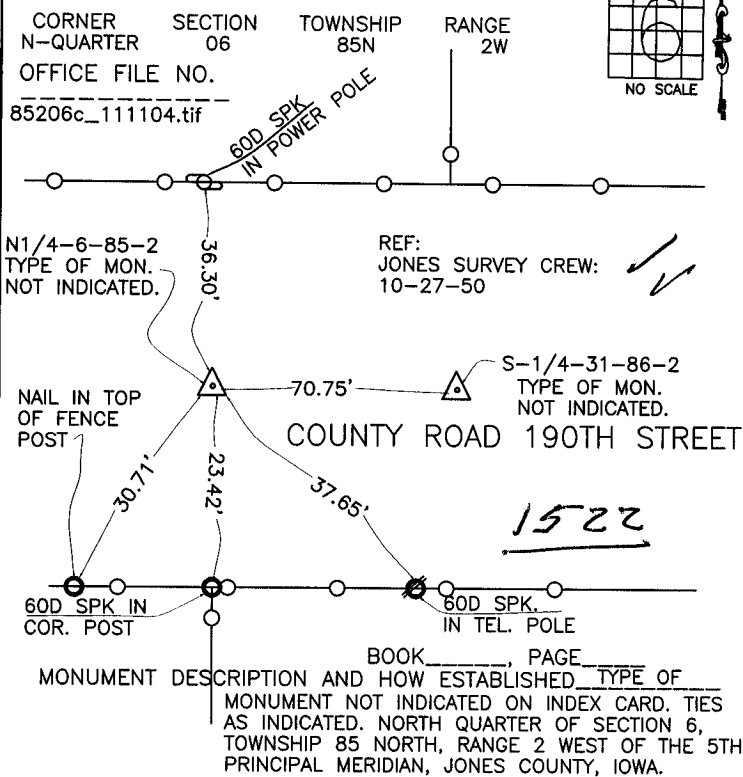
THIS IS NOT A CERTIFICATION

JONES COUNTY ENGINEER'S OFFICE, 19501 HWY. 64, ANAMOSA, IOWA, 52205 (319)462-3785

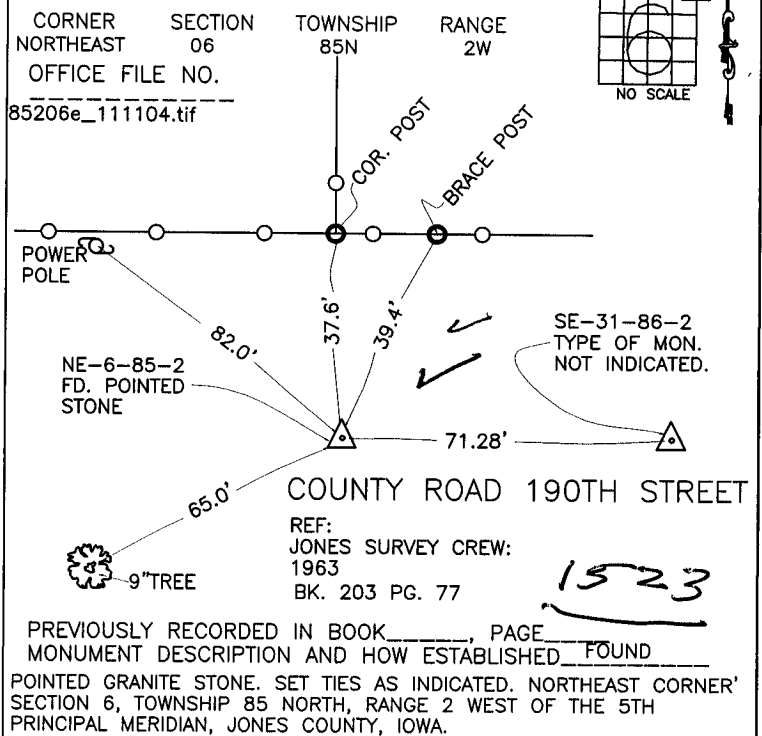
UNITED STATES PUBLIC LAND SURVEY CORNER CERTIFICATE

LAND SURVEY MONUMENTS SITUATED IN SECTION 6, TOWNSHIP 85
NORTH, RANGE 2 WEST OF THE 5TH P.M., JONES COUNTY, IOWA

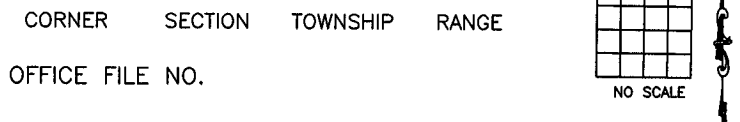
CORNERS TO BE INDEXED



CORNERS TO BE INDEXED



CORNERS TO BE INDEXED



CORNERS TO BE INDEXED

