

2002 3039

FILED  
RECORDERS OFFICE  
JONES COUNTY IOWA

02 AUG 20 AM 8:37

MARIE KRUTZFIELD  
RECORDER 6.00 pd

J.D. TJEPKES, LS, 23428 RIDGE ROAD, ANAMOSA, IOWA (319-462-6067)

# UNITED STATES PUBLIC LAND SURVEY CORNER CERTIFICATE

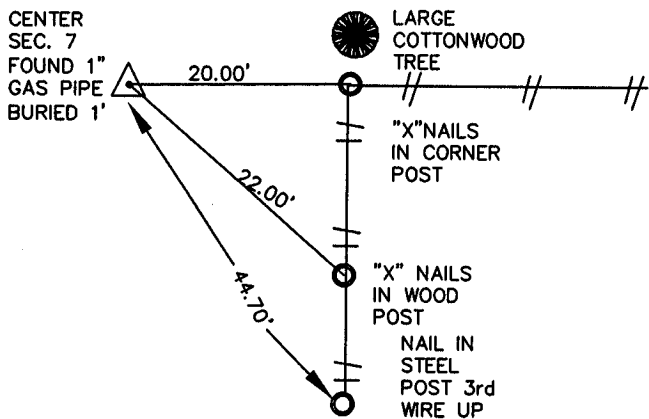
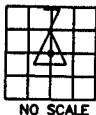
LAND SURVEY MONUMENTS SITUATED IN SECTION 7, TOWNSHIP 85  
NORTH, RANGE 2 WEST OF THE 5TH P.M., JONES COUNTY, IOWA

### CORNERS TO BE INDEXED

CORNER SECTION TOWNSHIP RANGE  
CENTER 7 85N 2W

OFFICE FILE NO. \_\_\_\_\_

1148

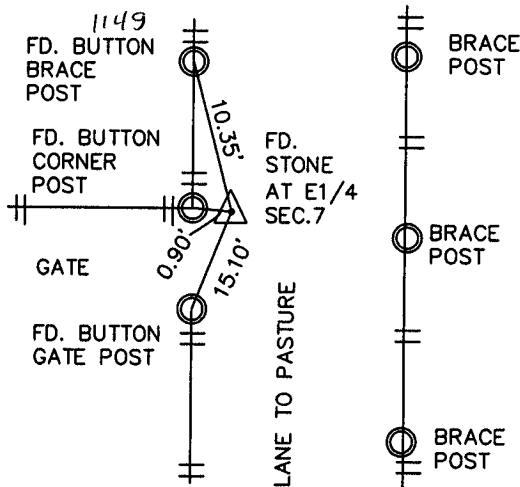
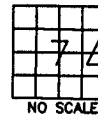


PREVIOUSLY RECORDED IN BOOK NA PAGE NA  
MONUMENT DESCRIPTION AND HOW ESTABLISHED \_\_\_\_\_  
FOUND 1" GAS PIPE PER D.O.T. PROJ. # FN-381. TIES  
RECORDED IN JONES CO. ENGINEER'S OFFICE DATED 1956.  
RETIED AS INDICATED

### CORNERS TO BE INDEXED

CORNER SECTION TOWNSHIP RANGE  
E1/4 7 85N 2W

OFFICE FILE NO. \_\_\_\_\_



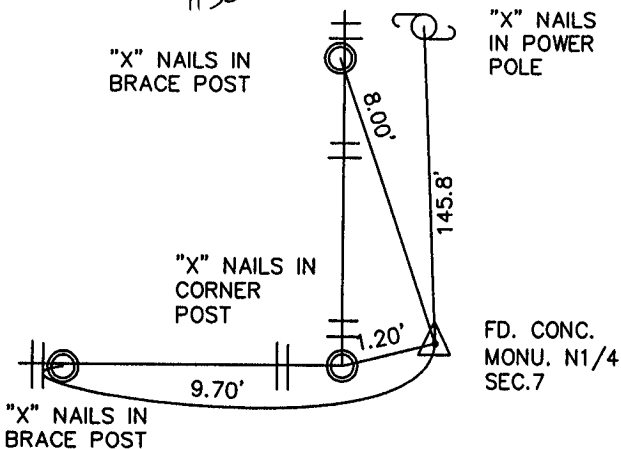
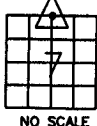
PREVIOUSLY RECORDED IN BOOK NA PAGE NA  
MONUMENT DESCRIPTION AND HOW ESTABLISHED \_\_\_\_\_  
FOUND SURVEY DISKS "MMS" IN FENCE POSTS PER PARCEL  
97-44 RECORDED IN BK M PG.81. IN RECORDERS OFFICE.  
DUG AND FOUND LIMESTONE BURIED 2' ON EAST SIDE OF  
CORNER POST. USED MMS BUTTONS TO RETIE STONE.

### CORNERS TO BE INDEXED

CORNER SECTION TOWNSHIP RANGE  
N1/4 7 85N 2W

OFFICE FILE NO. \_\_\_\_\_

1150



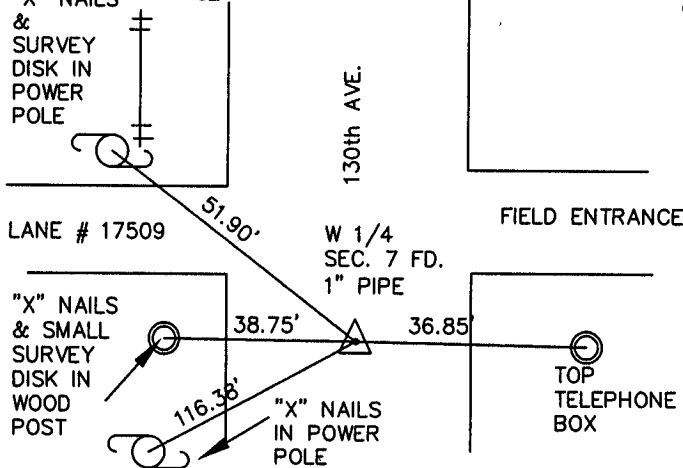
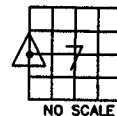
PREVIOUSLY RECORDED IN BOOK NA PAGE NA  
MONUMENT DESCRIPTION AND HOW ESTABLISHED \_\_\_\_\_  
FROM D.O.T. TIES OF PROJ. # FN-381 RECORDED IN  
JONES CO. ENGINEERS OFFICE DATED 1956. FOUND  
CONCRETE MONUMENT WITH 1/2" REBAR IN TOP. 1' NE OF  
OLD FENCE CORNER FLUSH WITH GROUND. RETIED AS  
INDICATED.

### CORNERS TO BE INDEXED

CORNER SECTION TOWNSHIP RANGE  
W 1/4 7 85N 2W

OFFICE FILE NO. \_\_\_\_\_

"X" NAILS 853120. 1151



PREVIOUSLY RECORDED IN BOOK NA PAGE NA  
MONUMENT DESCRIPTION AND HOW ESTABLISHED \_\_\_\_\_  
FOUND 1" GAS PIPE BURIED 12" PER D.O.T. TIES FOR PROJ.  
# FN-381 DATED 1956 AND RECORDED IN JONES COUNTY  
ENGINEERS OFFICE. ALSO FOUND SMALL SURVEY BUTTONS  
BEING USED AS TIES. RETIED AS INDICATED.

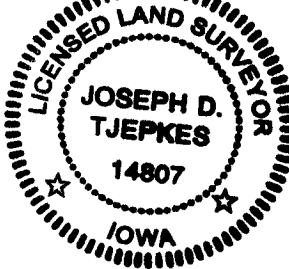
I hereby declare that this plat, survey or report was made by me or under my direct personal supervision and that I am a duly registered Land Surveyor under the laws of the State of Iowa.

Signed:

*Joseph D. Tjepkes* 8-20-02

Joseph D. Tjepkes L.S. Iowa Reg. No. 14807  
My Registration Renewal Date is December 31, 2002

SEAL



J.D. TJEPKES LS 14807  
23428 RIDGE ROAD  
ANAMOSA, IOWA 52205  
(319) 462-6067