

03 SEP 29 AM 9:32

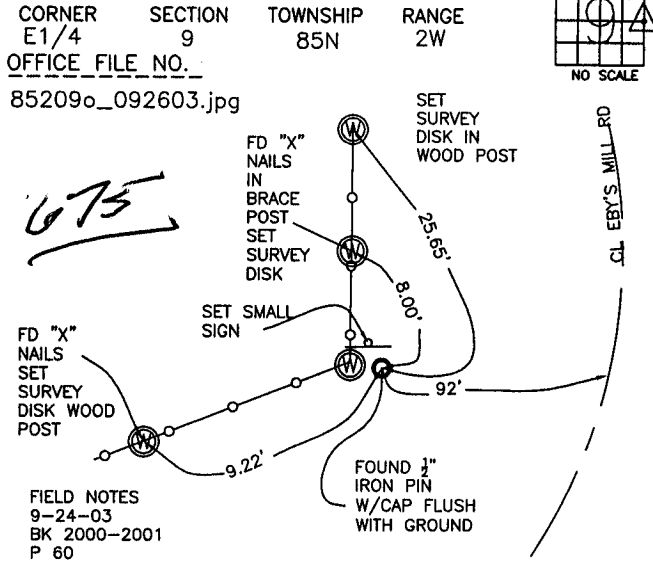
MARIE KRUTZFIELD  
 RECORDER No Fee

J.D. Tjepkes, LS. JONES COUNTY ENGINEER'S OFFICE, 19501 HWY. 64, ANAMOSA, IOWA, 52205 (319)462-3785

# UNITED STATES PUBLIC LAND SURVEY CORNER CERTIFICATE

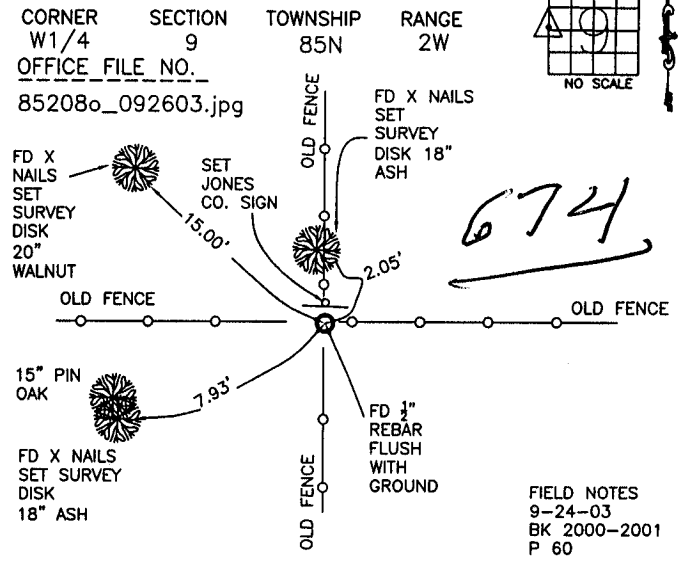
LAND SURVEY MONUMENTS SITUATED IN SECTION 9, TOWNSHIP 85  
 NORTH, RANGE 2 WEST OF THE 5TH P.M., JONES COUNTY, IOWA

### CORNERS TO BE INDEXED



PREVIOUSLY RECORDED IN BOOK 415, PAGE 28  
 MONUMENT DESCRIPTION AND HOW ESTABLISHED \_\_\_\_\_  
 PER TIES FROM LS #11954(JOHNSON) RECORDED IN JONES CO.  
 RECORDER'S OFFICE, FOUND 1/2" REBAR W/CAP #11954 ALONG EAST SIDE  
 OF WOOD CORNER POST. SET SMALL JONES COUNTY SIGN AND TIES AS  
 INDICATED. E 1/4 SECTION 9 TOWNSHIP 85 NORTH RANGE 2 WEST

### CORNERS TO BE INDEXED



PREVIOUSLY RECORDED IN BOOK 415, PAGE 28  
 MONUMENT DESCRIPTION AND HOW ESTABLISHED \_\_\_\_\_  
 PER TIES FROM LS #11954(JOHNSON) RECORDED IN JONES CO.  
 RECORDER'S OFFICE, FOUND 1/2" REBAR IN TIMBER AT CROSS FENCES. TREES  
 GROWING OVER "X" NAILS. SET SURVEY DISKS AT NAILS. SET SMALL JONES  
 COUNTY SIGN ON NORTH SIDE OF REBAR. TIES AS INDICATED. EAST 1/4  
 SECTION 8 TOWNSHIP 85 NORTH RANGE 2 WEST.

### CORNERS TO BE INDEXED

| CORNER | SECTION | TOWNSHIP | RANGE |
|--------|---------|----------|-------|
|        |         |          |       |

OFFICE FILE NO. \_\_\_\_\_

PREVIOUSLY RECORDED IN BOOK \_\_\_\_\_, PAGE \_\_\_\_\_  
 MONUMENT DESCRIPTION AND HOW ESTABLISHED \_\_\_\_\_

### CORNERS TO BE INDEXED

| CORNER | SECTION | TOWNSHIP | RANGE |
|--------|---------|----------|-------|
|        |         |          |       |

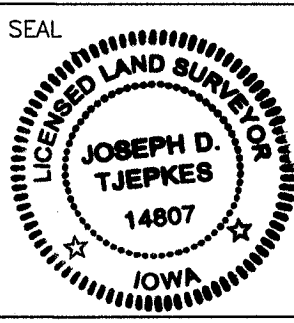
OFFICE FILE NO. \_\_\_\_\_

PREVIOUSLY RECORDED IN BOOK \_\_\_\_\_, PAGE \_\_\_\_\_  
 MONUMENT DESCRIPTION AND HOW ESTABLISHED \_\_\_\_\_

I hereby declare that this plat, survey or report was made by me or under my direct personal supervision and that I am a duly registered Land Surveyor under the laws of the State of Iowa.

Signed: 9-29-03

Joseph D. Tjepkes L.S. Iowa Reg. No. 14807  
 My Registration Renewal Date is December 31, 2004



J.D. Tjepkes LS 14807  
 JONES COUNTY  
 ENGINEER'S OFFICE

19501 HWY. 64,  
 ANAMOSA, IOWA,  
 52205 (319)462-3785

J

Scotch Grove

SURVEYOR: DANIEL J. JOHNSON - 209 29TH ST NE - CEDAR RAPIDS, IA 52402 - (319) 382-9548

SECTION CORNER CERTIFICATE

OF

LAND SURVEY MONUMENTS SITUATED IN SECTION 9, TOWNSHIP 85 NORTH, RANGE 2 WEST, OF THE FIFTH PRINCIPAL MERIDIAN, JONES, COUNTY, IOWA.

PREVIOUSLY RECORDED IN BOOK \_\_\_\_\_ AT PAGE \_\_\_\_\_

REASON FOR PREPARING CERTIFICATE:

- A) THERE IS NO CERTIFICATE FOR THE CORNER ON FILE WITH THE RECORDER OF THE COUNTY IN WHICH THE CORNER IS LOCATED.
- B) CORNER POSITION DIFFERS FROM THAT SHOWN IN THE PUBLIC RECORDS OF THE COUNTY IN WHICH THE CORNER IS LOCATED.
- C) THE CORNER MONUMENT HAS BEEN REPLACED OR MODIFIED.
- D) THE REFERENCE TIES REFERRED TO IN AN EXISTING PUBLIC RECORD ARE INCORRECT.

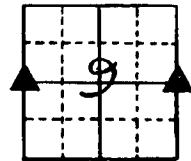
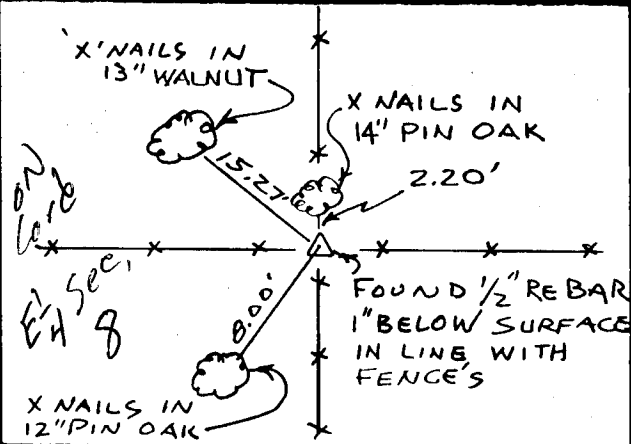
MONUMENT DESCRIPTION AND REMARKS:

WEST 1/4 CORNER: FOUND 1/2" RE-BAR, 1" BELOW SURFACE IN LINE WITH FENCE N-S-E-W.

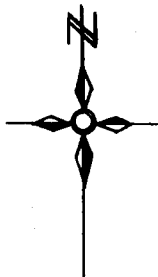
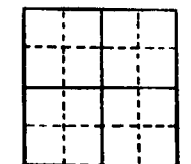
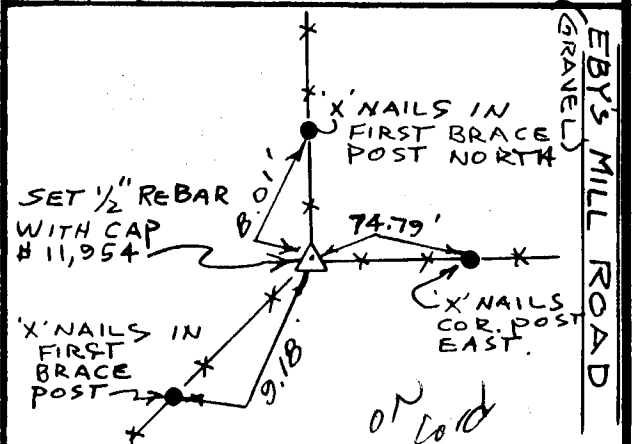
E 1/4 CORNER: SET 1/2" REBAR WITH CAP # 11,954

RECOVERY TIE DRAWING

WEST 1/4 CORNER 9-85-2



EAST 1/4 CORNER 9-85-2



I, DANIEL J. JOHNSON, - CERTIFY THAT THE CORNER LOCATION(S) SHOWN ON THIS RECORD WERE DETERMINED BY ME OR UNDER MY DIRECTION AND CONTROL AND THAT THIS U.S. PUBLIC LAND SURVEY MONUMENT RECORD IS CORRECT AND COMPLETE TO THE BEST OF MY KNOWLEDGE AND BELIEF

Daniel J. Johnson 12-19-96  
DANIEL J. JOHNSON L.S. NO 11954 DATE

My registration renewal date is December 31, 1998

LEGEND

- △ GOVERNMENT CORNER
- PROPERTY CORNER FOUND
- 1/2" X 30" W/ L.S. CAP SET
- EXISTING FENCE LINE
- PROPERTY LINE

SHEET TITLE: U.S. PUBLIC LAND SURVEY RECORD  
PROJECT TITLE: H. C. H. REAL ESTATE (Sue Nowadsky)

HALL AND HALL ENGINEERS, INC.  
209 29TH STREET N.E.  
CEDAR RAPIDS, IOWA 52402  
(319) 382-9548

DATE: 3-20-96 SCALE: NONE  
DWS JWP  
P.N.B. 0.T.40 P.N.B. 583.3