

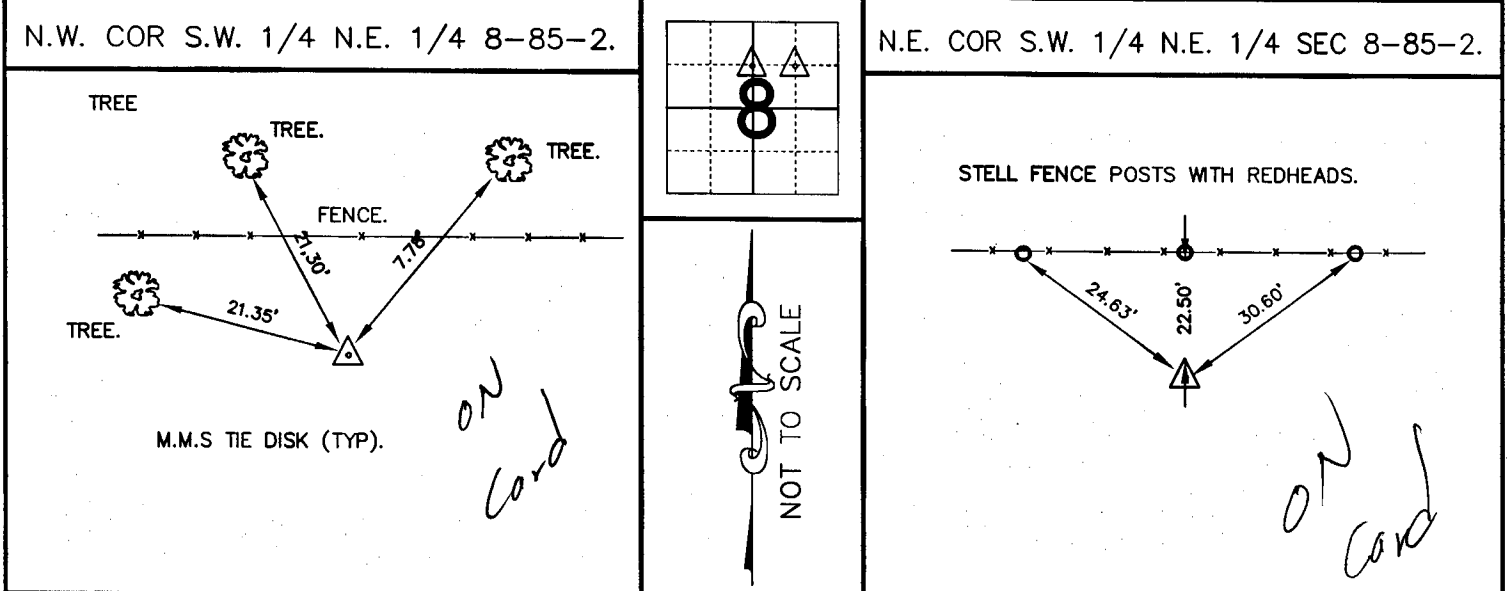
# U.S. PUBLIC LAND SURVEY CORNER CERTIFICATE

FOR LAND SURVEY MONUMENTS SITUATED IN SECTION 8, TOWNSHIP 85 NORTH, RANGE 2 WEST, OF THE FIFTH PRINCIPAL MERIDIAN, JONES, COUNTY, IOWA.

REASON FOR PREPARING CERTIFICATE:

- A) THERE IS NO CERTIFICATE FOR THE CORNER ON FILE WITH THE RECORDER.  
 B) CORNER FOUND DIFFERS FROM PREVIOUSLY RECORDED CERTIFICATE RECORDED IN BOOK NA AT PAGE NA.

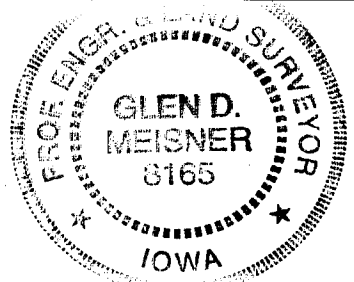
## RECOVERY TIE DRAWING



**MONUMENT DESCRIPTION AND REMARKS :**  
 N.W. COR S.W. 1/4 N.E. 1/4 8-85-2.  
 SET 5/8" PIN. SET BY BREAKING DOWN SEC 8-85-2.

**MONUMENT DESCRIPTION AND REMARKS :**  
 N.E. COR S.W. 1/4 N.E. 1/4 SEC 8-85-2,  
 SET 5/8" PIN. SET BY BREAKING DOWN SEC.

I HEREBY CERTIFY THAT THE CORNER LOCATION(S) SHOWN ON THIS RECORD WERE DETERMINED BY ME OR UNDER MY DIRECT PERSONAL SUPERVISION AND THAT THIS U.S. PUBLIC LAND SURVEY MONUMENT RECORD IS CORRECT AND COMPLETE TO THE BEST OF MY KNOWLEDGE AND BELIEF.



*Glend Meisner* 12-24-97  
 GLEN D. MEISNER, PE & LS IA. REG. NO. 8165 DATE  
 MY BIENNIAL RENEWAL DATE IS DECEMBER 31, 19 97

<p><b>LEGEND</b></p> <p>△ GOVERNMENT CORNER          ○ 5/8" TIE PIN SET          --- CENTERLINE          -x-x- EXISTING FENCE LINE          - - - R.O.W. LINE</p>	<p><b>SHEET TITLE:</b> U.S. PUBLIC LAND SURVEY CORNER CERTIFICATE</p> <p><b>PROJECT TITLE:</b> JOE AITCHSON          JONES COUNTY, IOWA.</p>	<p><b>MMS CONSULTANTS, INC.</b>          Iowa City, Iowa          319-351-8282</p>	<p><b>D</b> NW NLR    <b>R</b> IC GDM    <b>A</b> P GDM    <b>D</b> A T E 9-23-97    <b>S</b> C A L E NONE    <b>F</b> N O 459    <b>P</b> N O 4895-001</p>
---	--	--	---