

2002 3409

FILED  
RECORDERS OFFICE  
JONES COUNTY IOWA

02 SEP 18 AM 8:52

MARIE KRUTZFIELD  
RECORDER *NO FEE*

J.D. TJEPKES, LS. JONES COUNTY ENGINEER'S OFFICE, 19501 HWY. 64, ANAMOSA, IOWA, 52205 (319)462-3785

# UNITED STATES PUBLIC LAND SURVEY CORNER CERTIFICATE

LAND SURVEY MONUMENTS SITUATED IN SECTION 10, TOWNSHIP 86  
NORTH, RANGE 1 WEST OF THE 5TH P.M., JONES COUNTY, IOWA

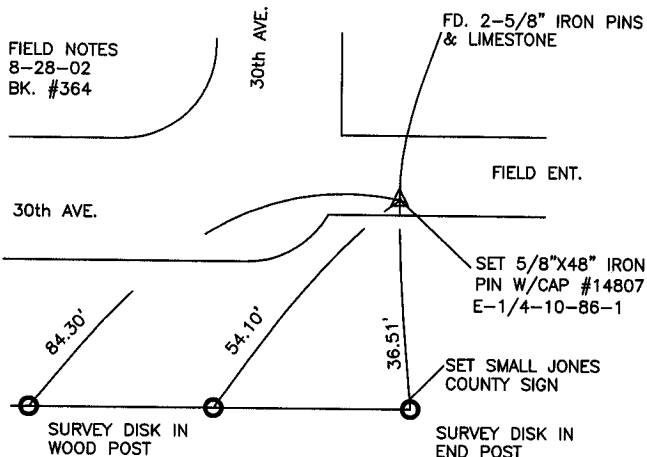
### CORNERS TO BE INDEXED

CORNER SECTION TOWNSHIP RANGE  
E1/4 10 86N 1W

OFFICE FILE NO. 870  
861100\_091602



FIELD NOTES  
8-28-02  
BK. #364

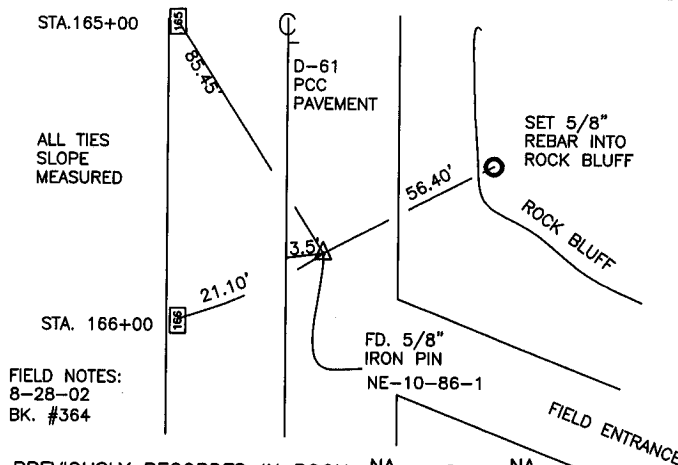
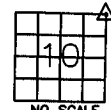


PREVIOUSLY RECORDED IN BOOK NA, PAGE NA  
MONUMENT DESCRIPTION AND HOW ESTABLISHED \_\_\_\_\_  
PER L.S. (WHITE) #4016 TIES RECORDED IN JONES COUNTY  
ENGINEERS OFFICE FOUND 2-5/8" IRON PINS ALONG SIDE OF  
LIMESTONE. SET 5/8"X48" IRON PIN WITH CAP #14807 ALONG  
SOUTH SIDE OF STONE AND RETIED AS INDICATED.

### CORNERS TO BE INDEXED

CORNER SECTION TOWNSHIP RANGE  
NE 10 86N 1W

OFFICE FILE NO. 869  
861100e\_091602



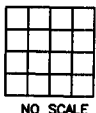
FIELD NOTES:  
8-28-02  
BK. #364

PREVIOUSLY RECORDED IN BOOK NA, PAGE NA  
MONUMENT DESCRIPTION AND HOW ESTABLISHED \_\_\_\_\_  
PER L.S. #4016 (WHITE) TIES RECORDED IN JONES COUNTY  
ENGINEERS OFFICE, FOUND 3/4" HOLE IN PAVEMENT. REDRILLED  
1" HOLE TO TOP OF IRON PIN. RETIED AS INDICATED.

### CORNERS TO BE INDEXED

CORNER SECTION TOWNSHIP RANGE

OFFICE FILE NO. \_\_\_\_\_

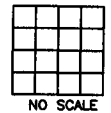


PREVIOUSLY RECORDED IN BOOK \_\_\_\_\_, PAGE \_\_\_\_\_  
MONUMENT DESCRIPTION AND HOW ESTABLISHED \_\_\_\_\_

### CORNERS TO BE INDEXED

CORNER SECTION TOWNSHIP RANGE

OFFICE FILE NO. \_\_\_\_\_



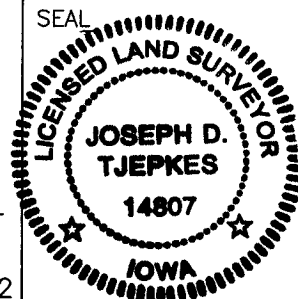
PREVIOUSLY RECORDED IN BOOK \_\_\_\_\_, PAGE \_\_\_\_\_  
MONUMENT DESCRIPTION AND HOW ESTABLISHED \_\_\_\_\_

I hereby declare that this plat, survey or report was made by me or under my direct personal supervision and that I am a duly registered Land Surveyor under the laws of the State of Iowa.

Signed:

*Joseph D. Tjepkes* 9-18-02

Joseph D. Tjepkes L.S. Iowa Reg. No. 14807  
My Registration Renewal Date is December 31, 2002



J.D. TJEPKES LS 14807  
JONES COUNTY  
ENGINEER'S OFFICE

19501 HWY. 64,  
ANAMOSA, IOWA,  
52205 (319)462-3785

# UNITED STATES PUBLIC LAND SURVEY CORNER CERTIFICATE

OF

Land Survey Monuments situated in Section 10, Township 86N, Range 1W, of the Fifth Principal Meridian, JONES County, Iowa. Previously recorded in \_\_\_\_\_ in County Recorder's Office.

(book, page, document number, etc.)

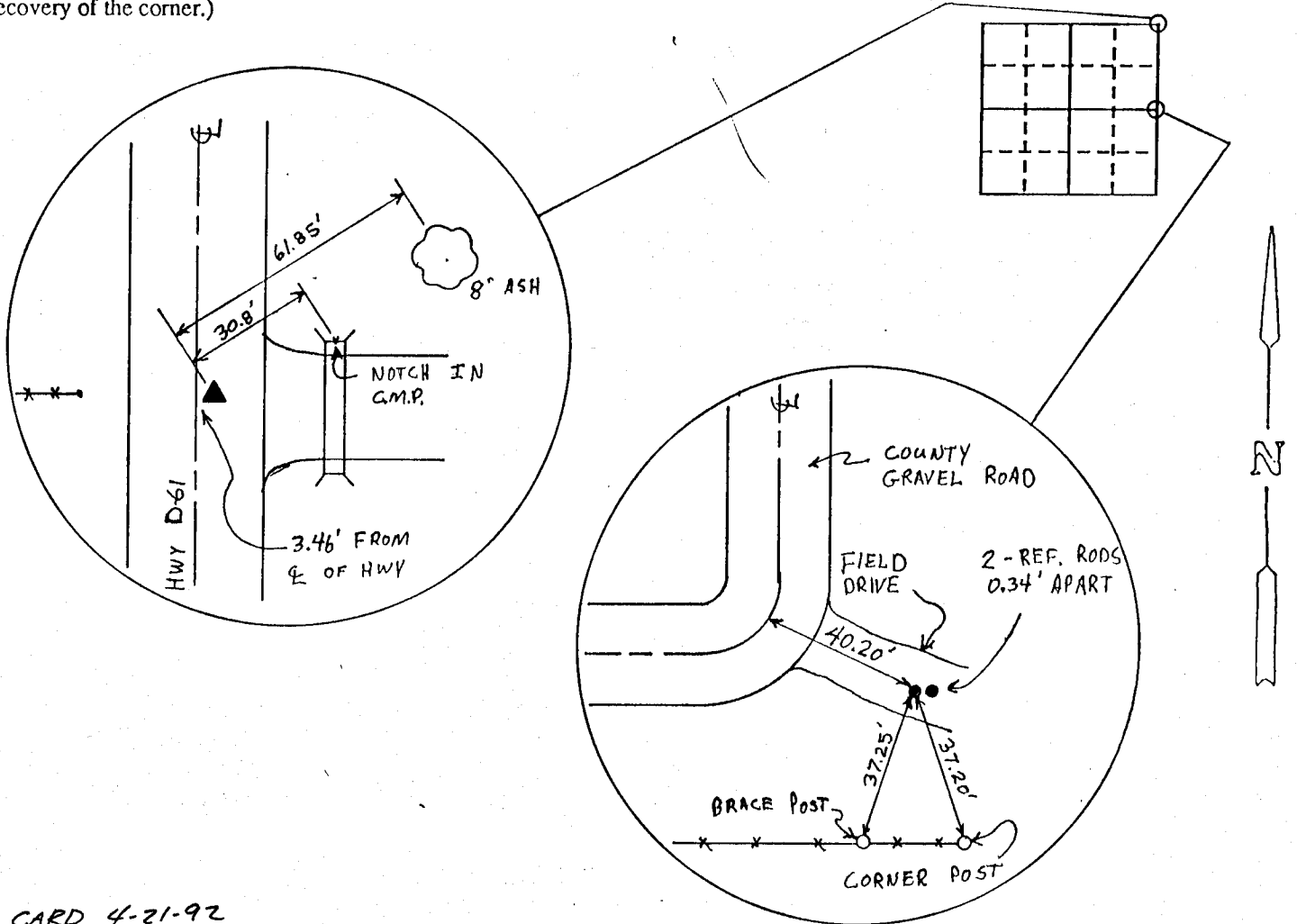
(Show reason for preparing this certificate, the evidence and detailed procedures used in establishing the corner positions and monumentation found or placed.)

Monument Description and Remarks: NE CORNER - FOUND 3/4" ROD IN PAVEMENT OF D-61 HWY, 1" DEEP INSIDE DRILLED HOLE EAST OF CENTER LINE.

E 1/4 - FOUND 2 - 5/8" REFERENCE RODS ON EITHER SIDE OF STONE 2" DEEP.

### PLAN - VIEW

(Show a minimum of three reference ties to durable physical objects, relevant monuments and physical conditions that will enable recovery of the corner.)



ON CARD 4-21-92

M.S.

I hereby certify that the survey work was completed and this certificate was prepared by me or under my direct personal supervision and that I am a duly registered land surveyor under the laws of the state of Iowa.

Signature: John L. White

Name typed or printed:

Date: \_\_\_\_\_ Reg. No. 4016

Corners	List Corners to be Indexed		
	Section	Twp	Range
NE	10	86N	1W
E 1/4	10	86N	1W

SEAL