

2005 2403

FILED
RECORDERS OFFICE
JONES COUNTY IOWA

05 JUL 11 AM 11:19

MARIE KRUTZFIELD
RECORDER 7.00 Pd

PREPARED BY: MICHAEL J. WEBER, WEBER SURVEYING, LLC, 26789 46TH AVE, BERNARD, IA 52032 (563) 879-4173

UNITED STATES PUBLIC LAND SURVEY CORNER CERTIFICATE OF

LAND SURVEY MONUMENTS SITUATED IN SECTION 10, TOWNSHIP 86 NORTH, RANGE 1 WEST
OF THE FIFTH PRINCIPAL MERIDIAN, JONES COUNTY, IOWA.
PREVIOUSLY RECORDED NONE UNLESS OTHERWISE NOTED

(book, page, document number, etc.)

(Show reason for preparing this certificate, the evidence and detailed procedures used in establishing the corner positions and monumentation found or placed.)

Monument Description and Remarks:

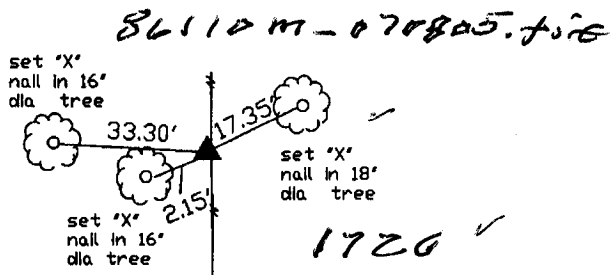
CENTER OF SEC. 10 T.86N. R.1W. OF THE 5TH P.M. PLACED 5/8" STEEL REROD W/ORANGE PLASTIC CAP MARKED 'WEBER PLS 15084', established corner by intersecting the line between the East 1/4 of Sec. 10 and the NW Cor. of the NE-SW of Sec. 10 and the line from the S 1/4 and the NW Cor. of the SW-NE of Sec. 10.

NW CORNER OF THE SW1/4-NE1/4, SEC. 10, T.86N. R.1W. OF THE 5TH P.M. PLACED 5/8" STEEL REROD W/ORANGE PLASTIC CAP MARKED 'WEBER PLS 15084', established corner at the intersecting occupation fencelines from the East, South and North.

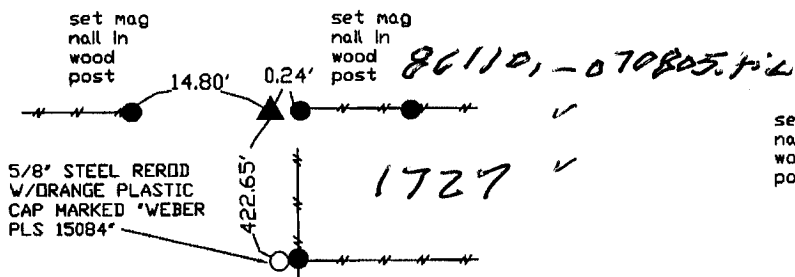
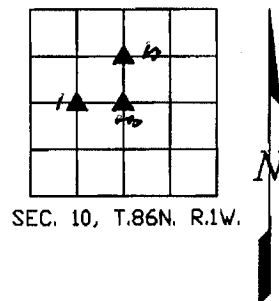
NW CORNER NE-SW SEC. 10 T.86N. R.1W. OF THE 5TH P.M. PLACED 5/8" STEEL REROD W/ORANGE PLASTIC CAP MARKED 'WEBER PLS 15084', established corner at the intersecting occupation fencelines from the South and East.

PLAN - VIEW

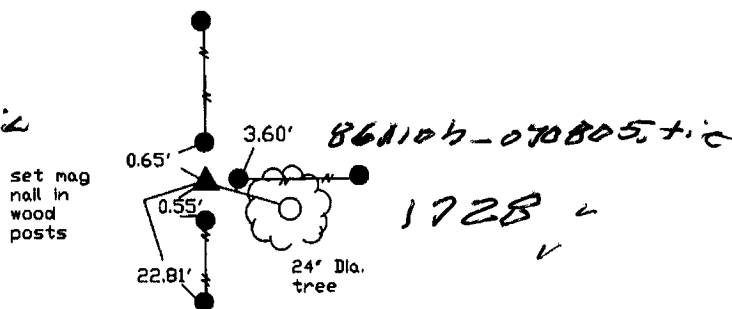
(Show a minimum of three reference ties to durable physical objects, relevant monuments and physical conditions that will enable recovery of the corner.)



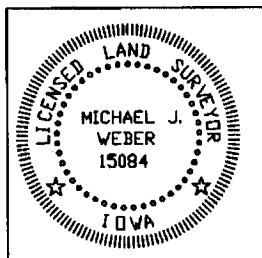
CENTER SEC. 10, T.86N. R.1W. OF THE 5TH P.M.
PLACED 5/8" STEEL REROD W/ORANGE PLASTIC
CAP MARKED 'WEBER PLS 15084'



NW CORNER NE-SW SEC. 10 T.86N. R.1W. OF THE
5TH P.M. PLACED 5/8" STEEL REROD W/ORANGE
PLASTIC CAP MARKED 'WEBER PLS 15084'



NW CORNER OF THE SW1/4-NE1/4, SEC. 10, T.86N.
R.1W. OF THE 5TH P.M. PLACED 5/8" STEEL REROD
W/ORANGE PLASTIC CAP MARKED 'WEBER PLS 15084'



I HEREBY CERTIFY THAT THIS LAND SURVEYING DOCUMENT WAS
PREPARED AND THE RELATED SURVEY WORK WAS PERFORMED BY ME OR
UNDER MY DIRECT PERSONAL SUPERVISION AND THAT I AM A DULY
LICENSED LAND SURVEYOR UNDER THE LAWS OF THE STATE OF IOWA.

Michael J. Weber (Signature)
MICHAEL J. WEBER (DATE) *July 8, 2005*

LICENSE NUMBER 15084
MY LICENSE RENEWAL DATE IS DECEMBER 31, 2005

SHEETS COVERED BY THIS SEAL: 1

List Corners to be Indexed		
Corner	Sec	Twp Range
CENTER	10	86N 1W
NW Corner SW-NE	10	86N 1W
NW Corner NE-SW	10	86N 1W