

2002 3409

FILED
RECORDERS OFFICE
JONES COUNTY IOWA

02 SEP 18 AM 8:52

MARIE KRUTZFIELD
RECORDER *NO FEE*

J.D. Tjepkes, LS. JONES COUNTY ENGINEER'S OFFICE, 19501 HWY. 64, ANAMOSA, IOWA, 52205 (319)462-3785

UNITED STATES PUBLIC LAND SURVEY CORNER CERTIFICATE

LAND SURVEY MONUMENTS SITUATED IN SECTION 10, TOWNSHIP 86
NORTH, RANGE 1 WEST OF THE 5TH P.M., JONES COUNTY, IOWA

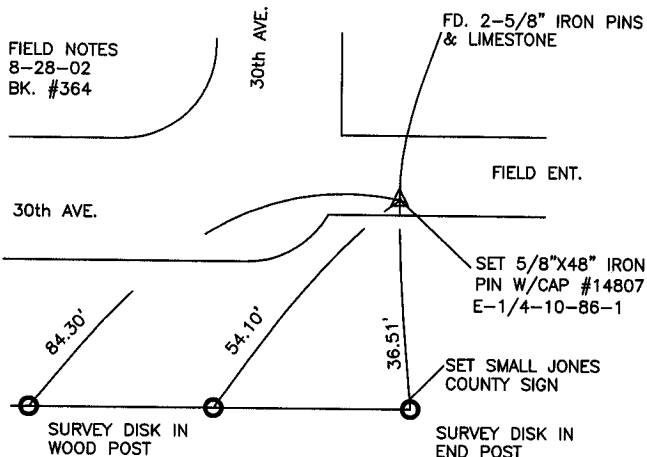
CORNERS TO BE INDEXED

CORNER SECTION TOWNSHIP RANGE
E1/4 10 86N 1W

OFFICE FILE NO. 870
861100_091602



FIELD NOTES
8-28-02
BK. #364

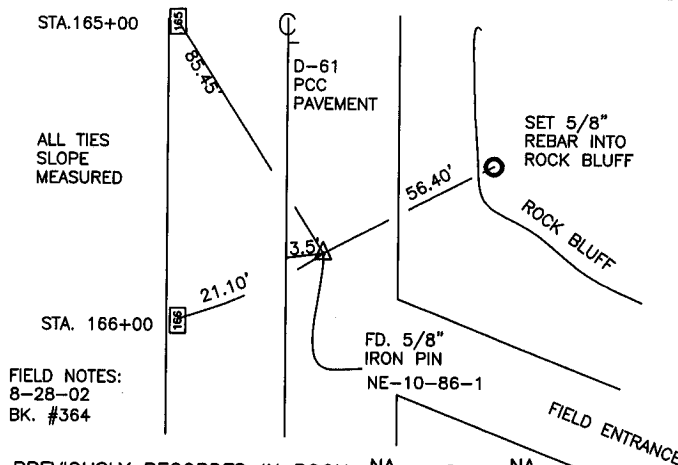
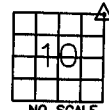


PREVIOUSLY RECORDED IN BOOK NA, PAGE NA
MONUMENT DESCRIPTION AND HOW ESTABLISHED _____
PER L.S. (WHITE) #4016 TIES RECORDED IN JONES COUNTY
ENGINEERS OFFICE FOUND 2-5/8" IRON PINS ALONG SIDE OF
LIMESTONE. SET 5/8"X48" IRON PIN WITH CAP #14807 ALONG
SOUTH SIDE OF STONE AND RETIED AS INDICATED.

CORNERS TO BE INDEXED

CORNER SECTION TOWNSHIP RANGE
NE 10 86N 1W

OFFICE FILE NO. 869
861100e_091602



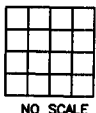
FIELD NOTES:
8-28-02
BK. #364

PREVIOUSLY RECORDED IN BOOK NA, PAGE NA
MONUMENT DESCRIPTION AND HOW ESTABLISHED _____
PER L.S. #4016 (WHITE) TIES RECORDED IN JONES COUNTY
ENGINEERS OFFICE, FOUND 3/4" HOLE IN PAVEMENT. REDRILLED
1" HOLE TO TOP OF IRON PIN. RETIED AS INDICATED.

CORNERS TO BE INDEXED

CORNER SECTION TOWNSHIP RANGE

OFFICE FILE NO. _____

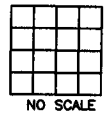


PREVIOUSLY RECORDED IN BOOK _____, PAGE _____
MONUMENT DESCRIPTION AND HOW ESTABLISHED _____

CORNERS TO BE INDEXED

CORNER SECTION TOWNSHIP RANGE

OFFICE FILE NO. _____



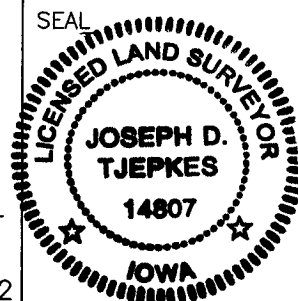
PREVIOUSLY RECORDED IN BOOK _____, PAGE _____
MONUMENT DESCRIPTION AND HOW ESTABLISHED _____

I hereby declare that this plat, survey or report was made by me or under my direct personal supervision and that I am a duly registered Land Surveyor under the laws of the State of Iowa.

Signed: _____

Joseph D. Tjepkes 9-18-02

Joseph D. Tjepkes L.S. Iowa Reg. No. 14807
My Registration Renewal Date is December 31, 2002



J.D. Tjepkes LS 14807
JONES COUNTY
ENGINEER'S OFFICE

19501 HWY. 64,
ANAMOSA, IOWA,
52205 (319)462-3785

UNITED STATES PUBLIC LAND SURVEY CORNER CERTIFICATE

OF

Land Survey Monuments situated in Section 10, Township 86N, Range 1W, of the Fifth Principal Meridian, JONES County, Iowa. Previously recorded in _____ in County Recorder's Office.

(book, page, document number, etc.)

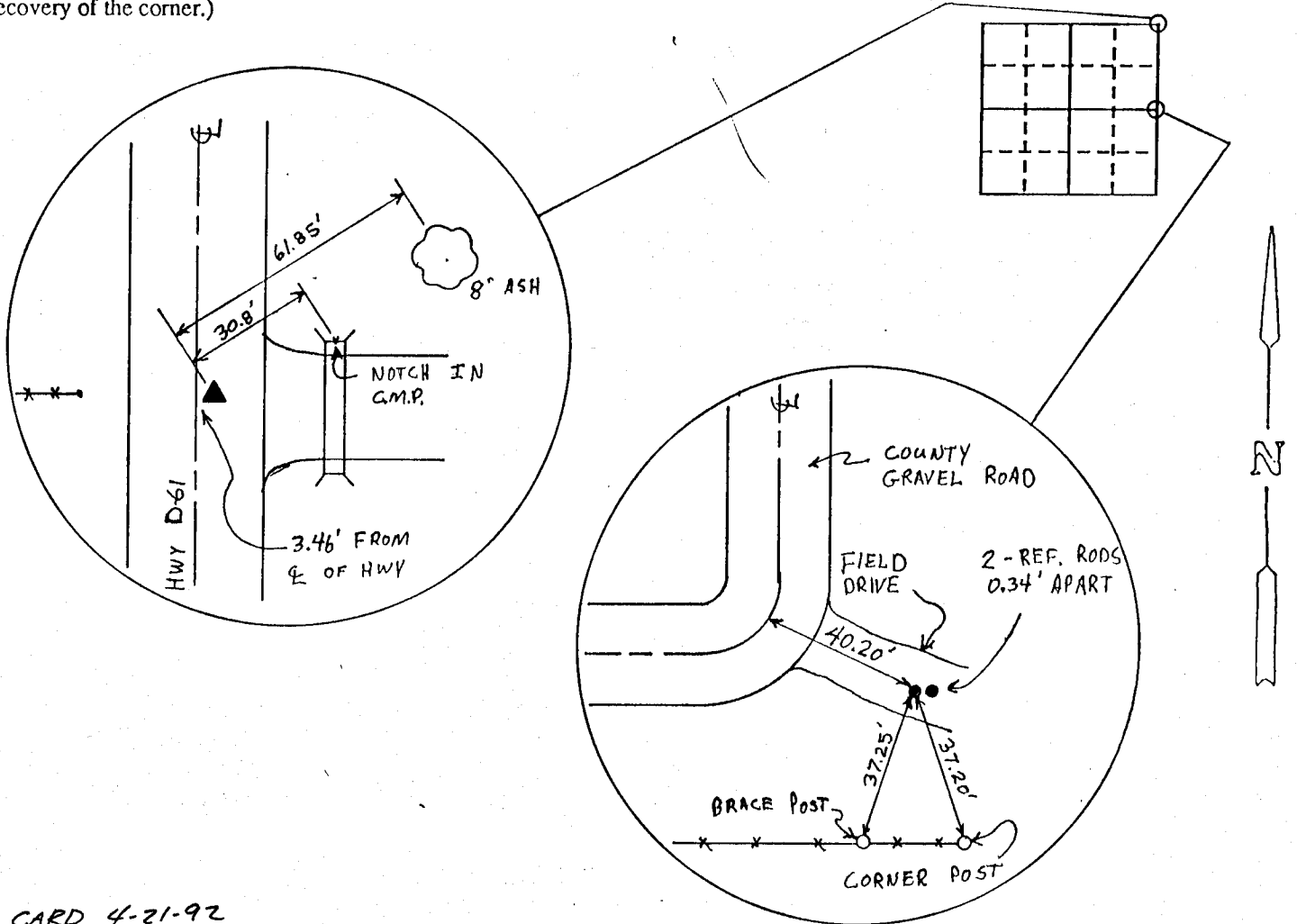
(Show reason for preparing this certificate, the evidence and detailed procedures used in establishing the corner positions and monumentation found or placed.)

Monument Description and Remarks: NE CORNER - FOUND 3/4" ROD IN PAVEMENT OF D-61 HWY, 1" DEEP INSIDE DRILLED HOLE EAST OF CENTER LINE.

E 1/4 - FOUND 2 - 5/8" REFERENCE RODS ON EITHER SIDE OF STONE 2" DEEP.

PLAN - VIEW

(Show a minimum of three reference ties to durable physical objects, relevant monuments and physical conditions that will enable recovery of the corner.)



ON CARD 4-21-92

M.S.

I hereby certify that the survey work was completed and this certificate was prepared by me or under my direct personal supervision and that I am a duly registered land surveyor under the laws of the state of Iowa.

Signature: John L. White
Name typed or printed:

Date: _____ Reg. No. 4016

Corners	List Corners to be Indexed		
	Section	Twp	Range
NE	10	86N	1W
E 1/4	10	86N	1W

SEAL