

2004 0396

FILED
RECORDERS OFFICE
JONES COUNTY IOWA

04 FEB -3 PM 1:54

MARIE KRUTZFIELD
RECORDER 11:00 Pd

PREPARED BY: MICHAEL J. WEBER, BUESING & ASSOCIATES, 1212 LOCUST ST, DUBUQUE, IA 52001, PH: (563) 556-4389

UNITED STATES PUBLIC LAND SURVEY CORNER CERTIFICATE OF

LAND SURVEY MONUMENTS SITUATED IN SECTION 10, TOWNSHIP 86 NORTH, RANGE 1 WEST
OF THE FIFTH PRINCIPAL MERIDIAN, JONES COUNTY, IOWA.
PREVIOUSLY RECORDED NONE

(book, page, document number, etc.)

(Show reason for preparing this certificate, the evidence and detailed procedures used in establishing the corner positions and monumentation found or placed.)

Monument Description and Remarks:

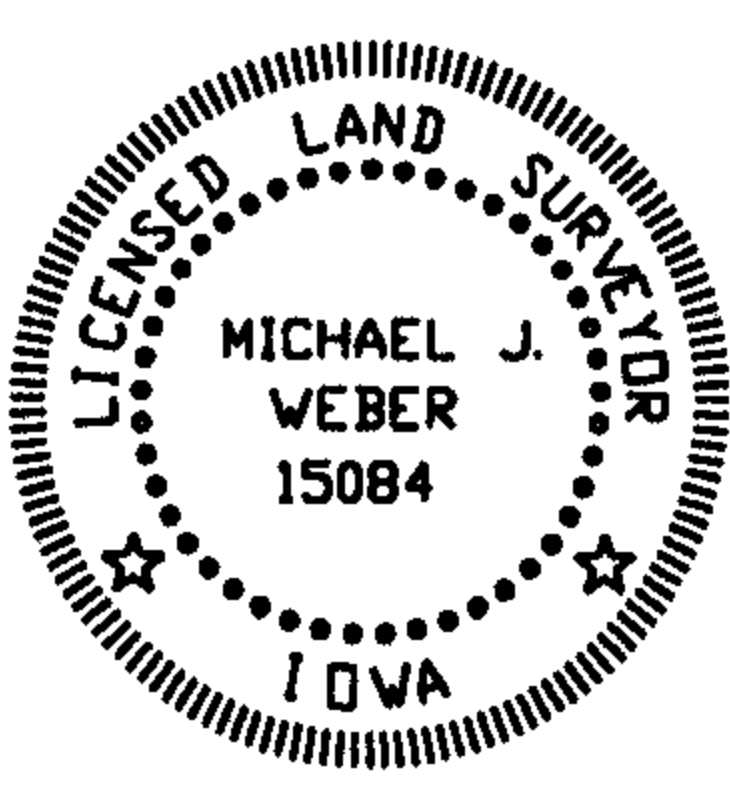
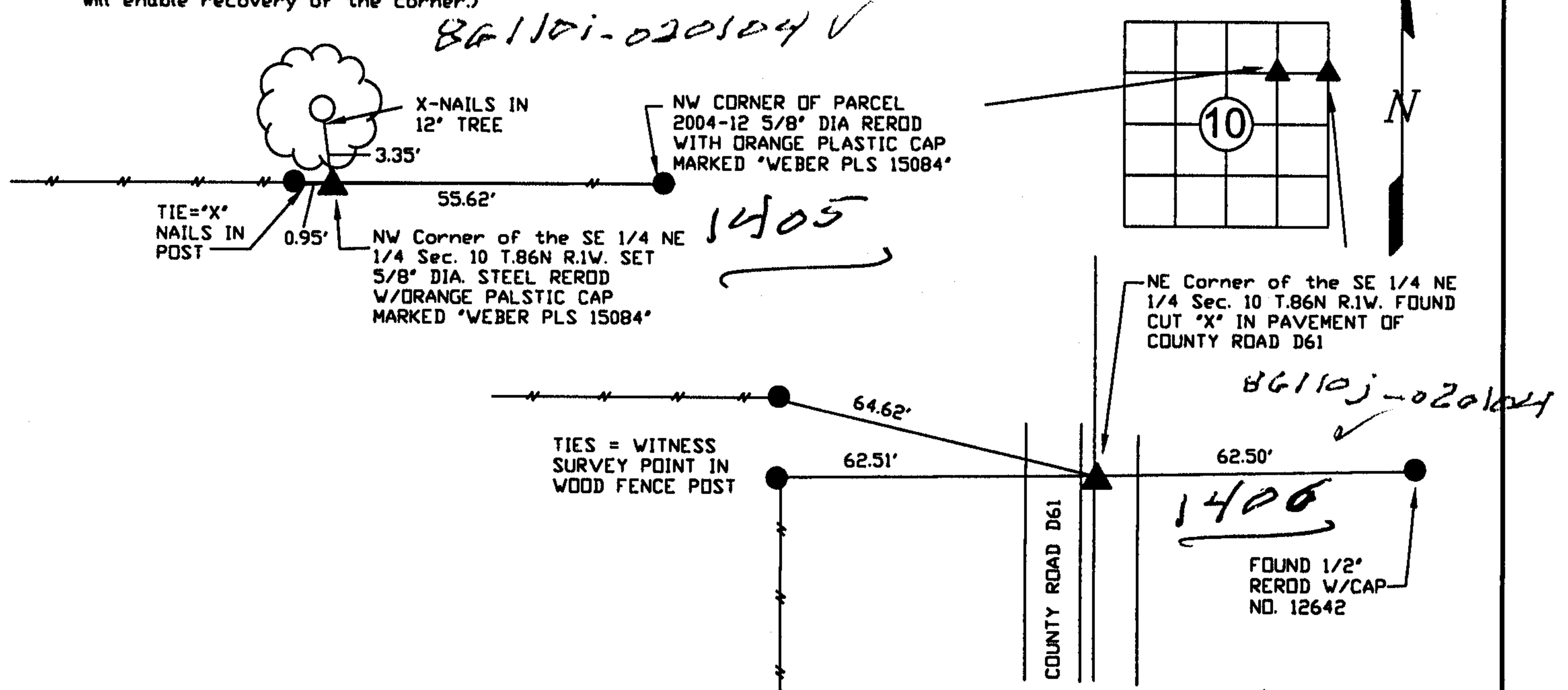
Reason: Plat of Survey of Parcel 2004-12 in Section 10 was prepared showing the corners identified below.

NE Corner of the SE 1/4 NE 1/4 found cut "X" in pavement of County Road D61 set per Plat of Survey of Parcel 2003-100 recorded in Plat Book P Page 92.

NW Corner of the SE 1/4 NE 1/4 no monumentation found, set 5/8" Dia. rerod w/orange cap marked "WEBER PLS 15084", established corner midway between said NE Corner of the SE 1/4 NE 1/4 and the NW Corner occupation fence corner of the SW 1/4 NE 1/4 and online with occupation fenceline.

PLAN - VIEW

(Show a minimum of three reference ties to durable physical objects, relevant monuments and physical conditions that will enable recovery of the corner.)



I HEREBY CERTIFY THAT THIS LAND SURVEYING DOCUMENT WAS PREPARED AND THE RELATED SURVEY WORK WAS PERFORMED BY ME OR UNDER MY DIRECT PERSONAL SUPERVISION AND THAT I AM A DULY LICENSED LAND SURVEYOR UNDER THE LAWS OF THE STATE OF IOWA.

Michael J. Weber 1 February 2004
MICHAEL J. WEBER (DATE)
LICENSE NUMBER 15084
MY LICENSE RENEWAL DATE IS DECEMBER 31, 2005

SHEETS COVERED BY THIS SEAL: This sheet

Corner	Sec	Twp	Range
NE CORNER OF THE SE-NE	10	86N	1W
NW CORNER OF THE SE-NE	10	86N	1W

M