

FILED  
RECORDERS OFFICE  
JONES COUNTY IOWA

98 FEB 25 AM 10:05

LINDA J. BENDIXEN  
RECORDER *6 pd*

### United States Public Land Survey Corner Certificate

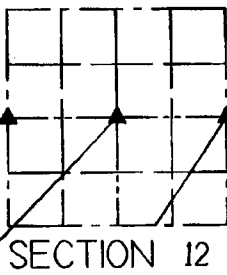
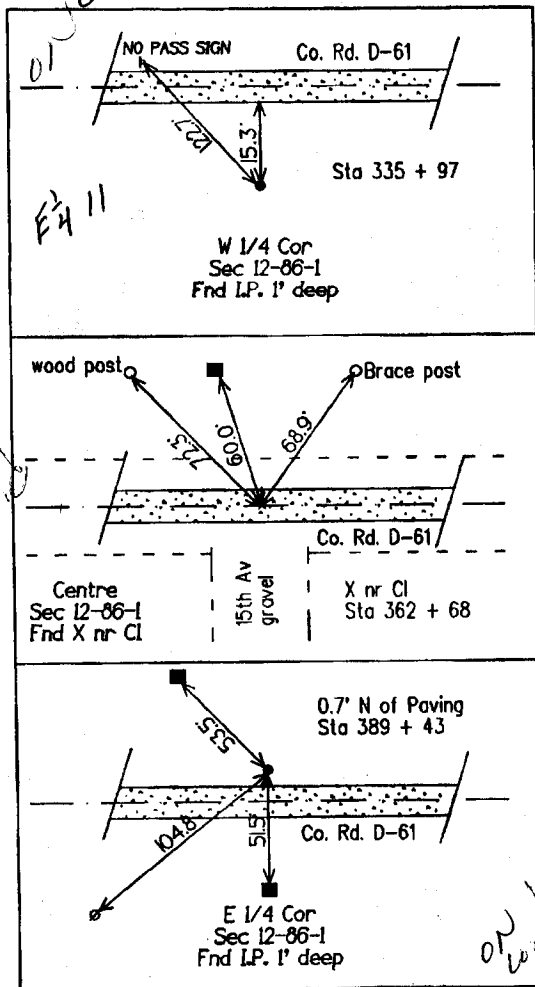
Land survey corner in Section 12 Township 86 North.

Range 1 West of the 5th Principal Meridian, Jones

County, Iowa



NO SCALE



- LEGEND
- IRON PIN OR PIPE FOUND
  - I. PIN SET CAPPED
  - CORNER POST
  - ▲ CONGRESSIONAL CORNER
  - ⊗ POWERPOLE
  - ⊞ TELE JCT BOX
  - TREE

#### Certification

I hereby certify that this plat and survey was made by me or under my direct supervision and that I am a duly Registered Land Surveyor under the laws of the State of Iowa.

*Harold E. Dillon* 2/23/98

Harold E. Dillon Iowa Reg. 6581 My certification expires 12/31/98



Dillon Surveying Co.  
Cornaville, Ia 52241  
(319) 351-5647

Washington

RECEIVED

DEC 14 1995

SLSI 9-90

UNITED STATES PUBLIC LAND SURVEY CORNER CERTIFICATE

OF

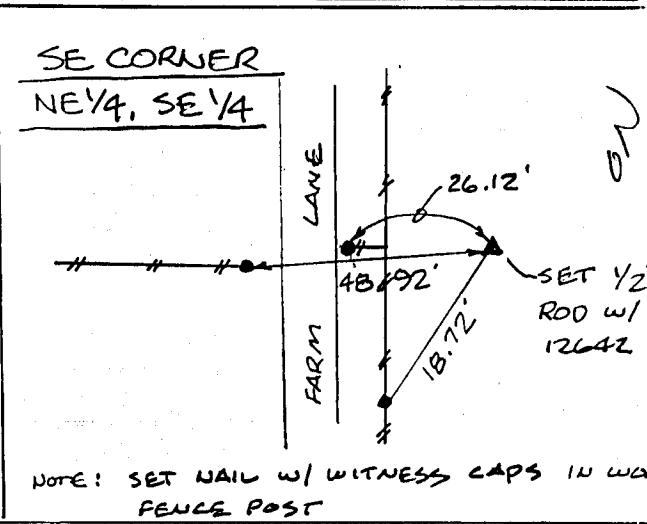
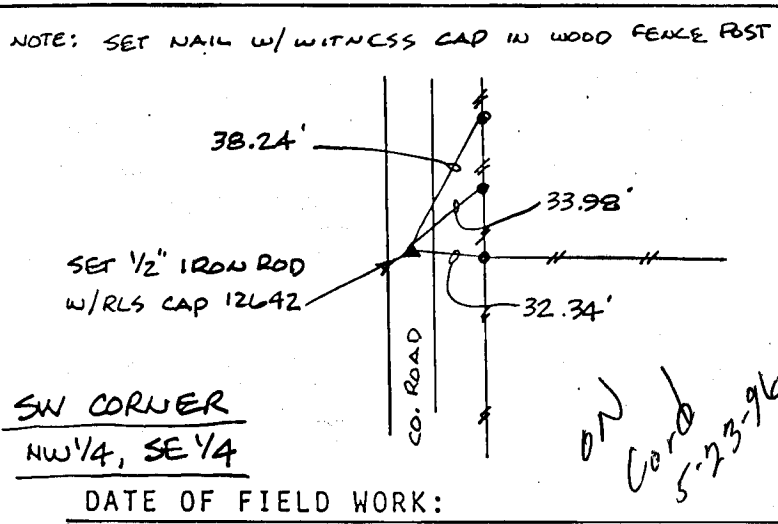
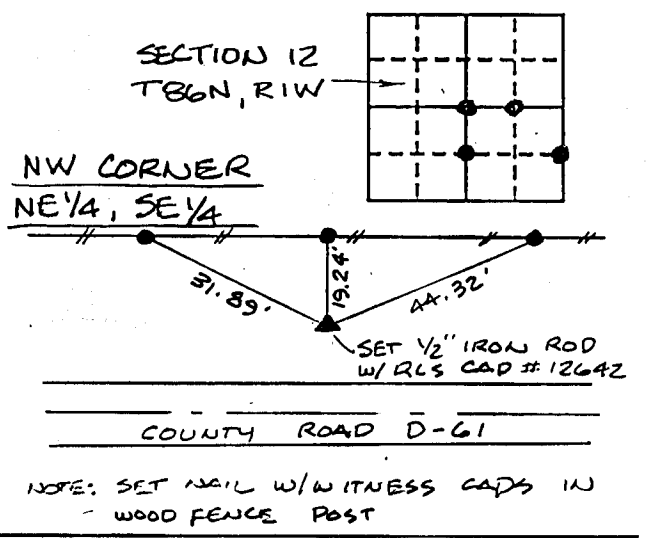
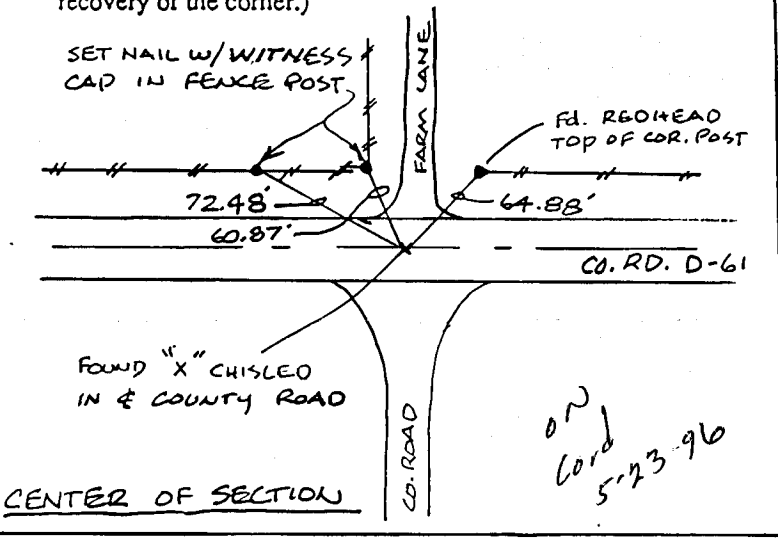
Land Survey Monuments situated in Section TWELVE (12), Township 86 NORTH, Range ONE WEST, of the Fifth Principal Meridian, JONES County, Iowa. Previously recorded in BK 310, P. 183 & BK 317, P. 312 in County Recorder's Office.

(Show reason for preparing this certificate, the evidence and detailed procedures used in establishing the corner positions and monumentation found or placed.)

Monument Description and Remarks: NO CORNER CERTIFICATE'S AT THE RECORDER'S OFFICE OR EXISTING CORNER TIES NO LONGER VALID. CENTER OF SECTION - FOUND "X" CHISLED IN CONC. (USED OLD TIES) NW CORNER NE 1/4, SE 1/4 - SET 1/2" IRON ROD W/ RLS CAP 12642 ON LINE & MIDWAY BETWEEN CENTER OF SECTION & E 1/4 CORNER. SW CORNER NW 1/4, SE 1/4 - SET 1/2" IRON ROD W/ RLS CAP 12642 ON LINE & MIDWAY BETWEEN THE CENTER OF SECTION & THE S 1/4 CORNER. \* SEE BELOW

PLAN - VIEW

(Show a minimum of three reference ties to durable physical objects, relevant monuments and physical conditions that will enable recovery of the corner.)



I hereby certify that the survey work was completed and this certificate was prepared by me or under my direct personal supervision and that I am a duly registered land surveyor under the laws of the state of Iowa.

Signature: William H. Burger
Name typed or printed: WILLIAM H. BURGER
Date: 12/13/95 Reg. No. 12642

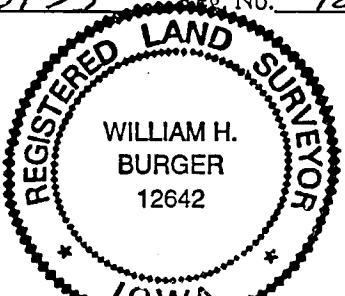


Table with 4 columns: Corners, List Section, Twp, Range. Rows include CENTER 12 86N 1W, NW-NE 1/4, SE 1/4 12 86N 1W, SW-NW 1/4, SE 1/4 12 86N 1W, SE-NE 1/4, SE 1/4 12 86N 1W.

\* SE CORNER NE 1/4, SE 1/4 - SET 1/2" IRON ROD W/ RLS CAP 12642 ON LINE W/ & MIDWAY BETWEEN E 1/4 CORNER AND THE SE CORNER OF SAID SEC. 12.

# UNITED STATES PUBLIC LAND SURVEY CORNER CERTIFICATE

OF

Land Survey Monuments situated in Section 12, Township 86 NORTH, Range 1 WEST, of the Fifth Principal Meridian, JONES County, Iowa.  
 Previously recorded in \_\_\_\_\_ in County Recorder's Office.

(book, page, document number, etc.)

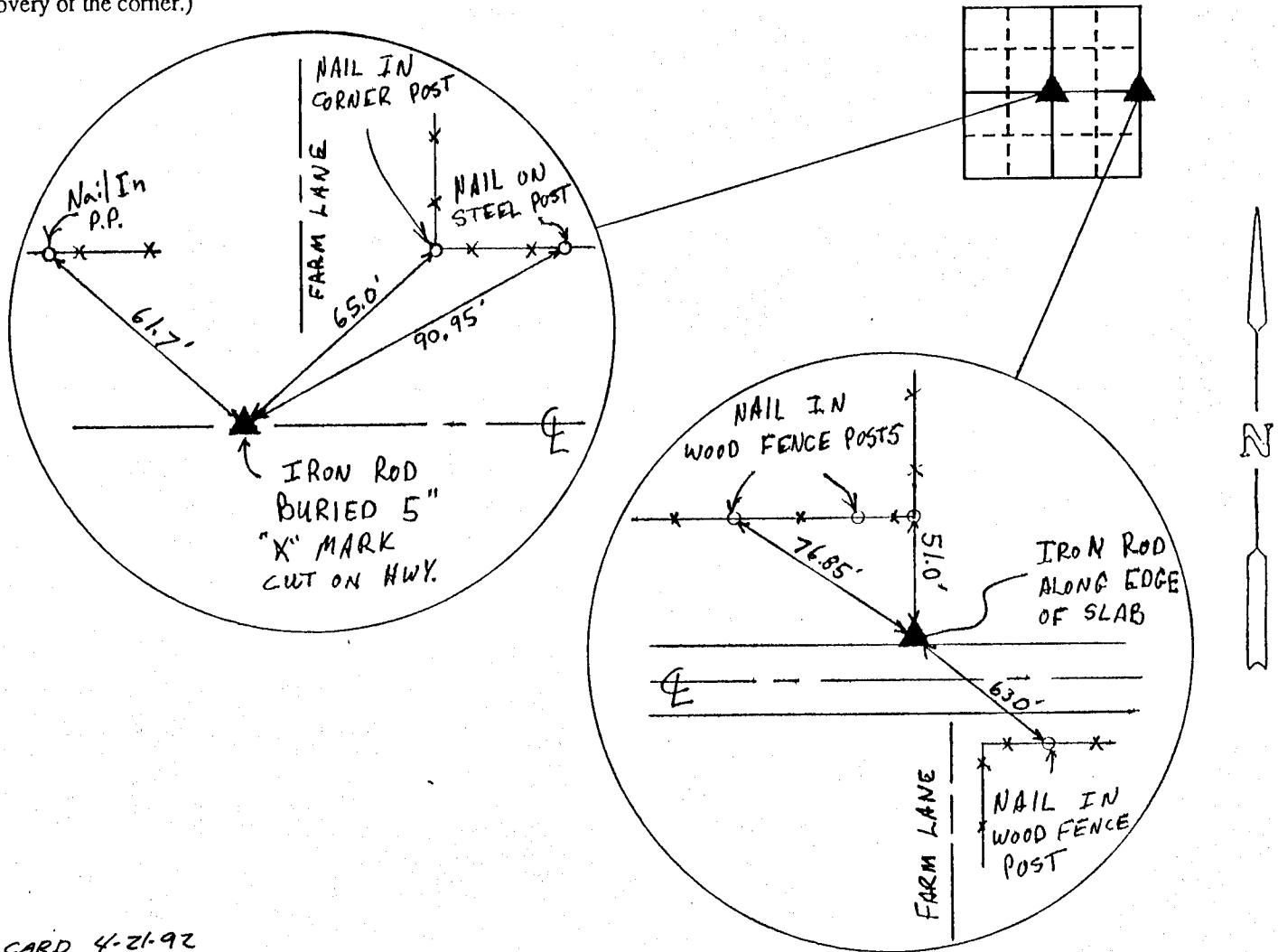
(Show reason for preparing this certificate, the evidence and detailed procedures used in establishing the corner positions and monumentation found or placed.)

Monument Description and Remarks: E 1/4 - IRON ROD BURIED ALONG NORTH  
EDGE OF HIGHWAY SLAB

CENTER OF SECTION - FOUND "X" MARK CUT IN SURFACE  
OF HIGHWAY.

## PLAN - VIEW

(Show a minimum of three reference ties to durable physical objects, relevant monuments and physical conditions that will enable recovery of the corner.)



ON CARD 4-21-92

M.S.

I hereby certify that the survey work was completed and this certificate was prepared by me or under my direct personal supervision and that I am a duly registered land surveyor under the laws of the state of Iowa.

Signature: John L. White

Name typed or printed: \_\_\_\_\_

Date: \_\_\_\_\_ Reg. No. 4016

Corners	List Corners to be Indexed		
	Section	Twp	Range
E 1/4	12	86N	1W
CENTER	12	86N	1W

SEAL

# UNITED STATES PUBLIC LAND SURVEY CORNER CERTIFICATE OF

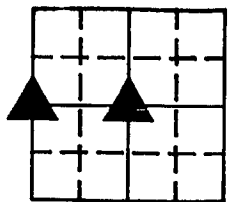
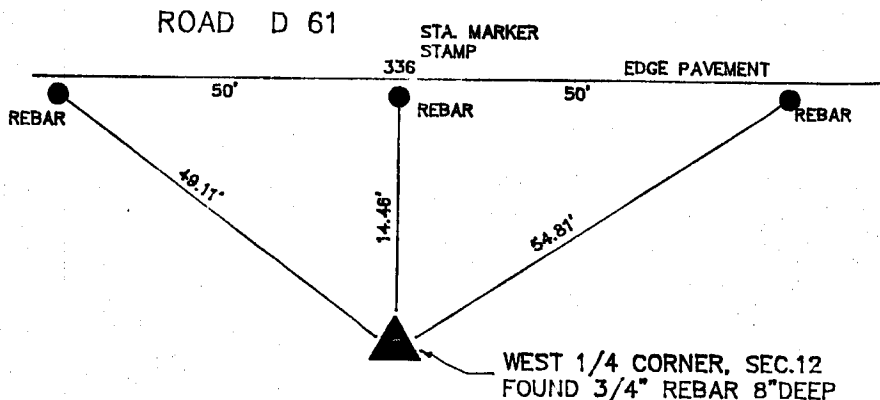
LAND SURVEY MONUMENTS SITUATED IN SECTION 12, TOWNSHIP 86 N, RANGE 1 WEST  
OF THE FIFTH PRINCIPAL MERIDIAN, JONES COUNTY, IOWA.  
PREVIOUSLY RECORDED IN \_\_\_\_\_ IN COUNTY RECORDER'S OFFICE.

(Show reason for preparing this certificate, the evidence and detailed procedures used in establishing the corner positions and monumentation found or placed.)

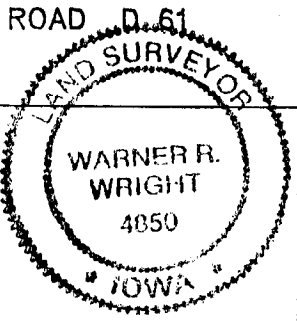
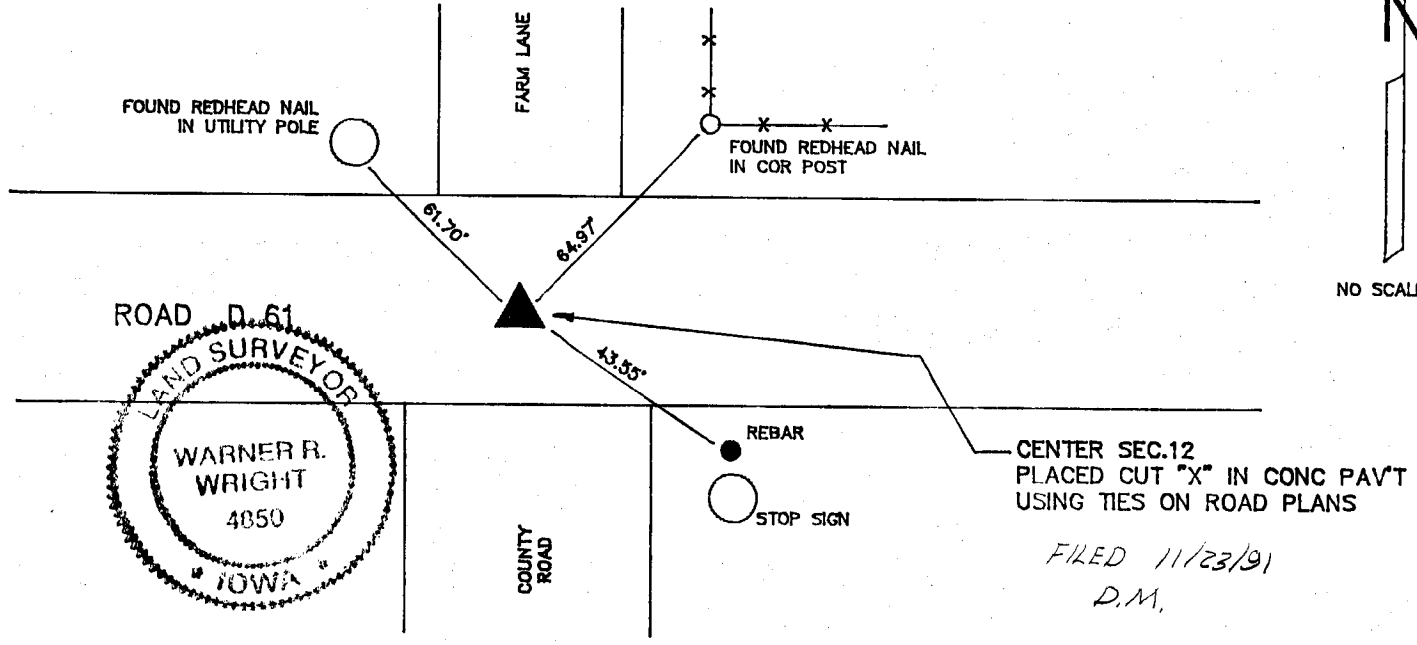
Monument Description and Remarks: WEST QUARTER CORNER: FOUND 3/4" REBAR IN SIDESLOPE OF ROAD D 61; HISTORY: 1979-  
FOUND LIMESTONE FLUSH WITH GROUND, LOWERED LIMESTONE AND SET IRON PIN OVER: 1984-RESET IRON PIN. (FROM RECORDS OF COUNTY ENG.)  
CENTER: PLACED CUT "X" IN CONC PAVEMENT OF ROAD D 61; HISTORY: 1979- FOUND BURIED LIMESTONE USING 1936 ROAD PLANS TO LOCATE, SET  
IRON PIN OVER STONE; 1984 - RESET TIES. (FROM RECORDS OF COUNTY ENG.) PLACED CUT "X" USING FOUND 1984 TIES

## PLAN - VIEW

(Show a minimum of three reference ties to durable physical objects, relevant monuments and physical conditions that will enable recovery of the corner.)



*E 1/4 SEC. 11 86N 1W  
FILED 11/23/91  
D.M.*



I HEREBY CERTIFY THAT THE SURVEY WORK WAS COMPLETED AND THIS CERTIFICATE WAS PREPARED BY ME OR UNDER MY DIRECT PERSONAL SUPERVISION AND THAT I AM A DULY REGISTERED LAND SURVEYOR UNDER THE LAWS OF THE STATE OF IOWA.

*Warner R. Wright*  
NAME: WARNER R. WRIGHT REG. NO. 4850  
DATE: 9-19-91

LIST CORNERS TO BE INDEXED

CORNERS	SECTION	TWP	RANGE
WEST 1/4	12	86N	1W
CENTER	12	86N	1W

	IIW ENGINEERS & SURVEYORS P.C.	<b>MONUMENT RECORD</b>	
	3210 ST. JOSEPH DR DUBUQUE, IA 52001 319356-2464 302 S. RIVER PARK DR GUTTENBERG, IA 52052 319252-3823 P.O. BOX 275 GALENA, ILL. 61036 815777-0359	COUNTY: <u>JONES</u>	FIELD BOOK NO. <u>334</u>
TOWNSHIP: <u>WASHINGTON</u>		DATE: <u>9-11-91</u>	INDEX NO.
		REVISED:	