

Washington

RECEIVED

DEC 14 1995

SLSI 9-90

UNITED STATES PUBLIC LAND SURVEY CORNER CERTIFICATE

OF

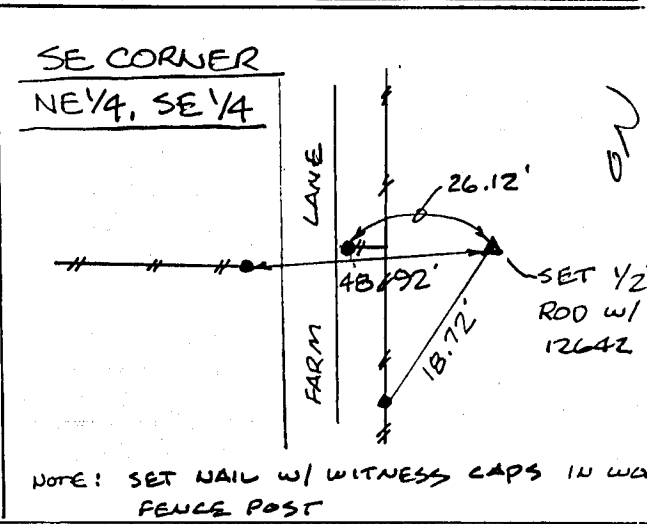
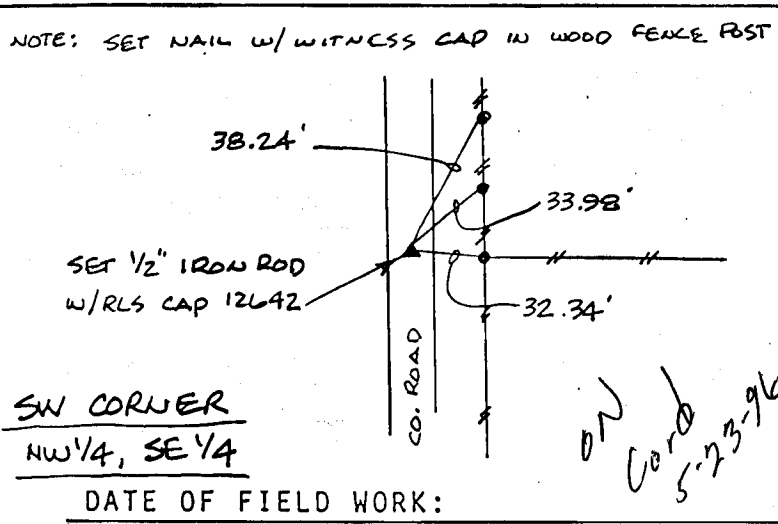
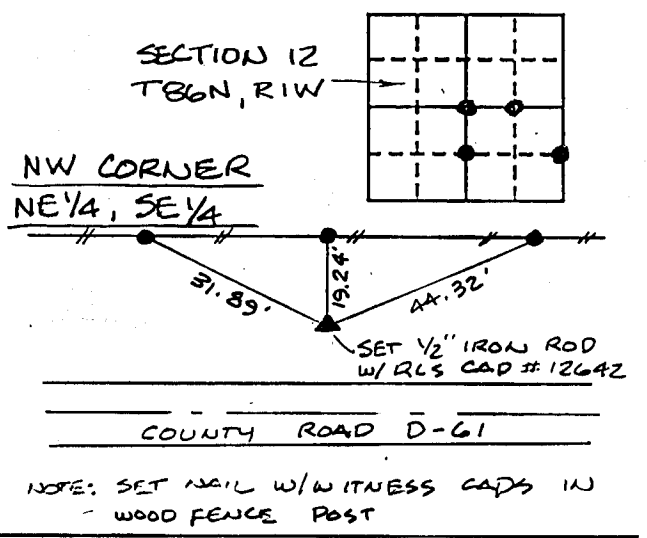
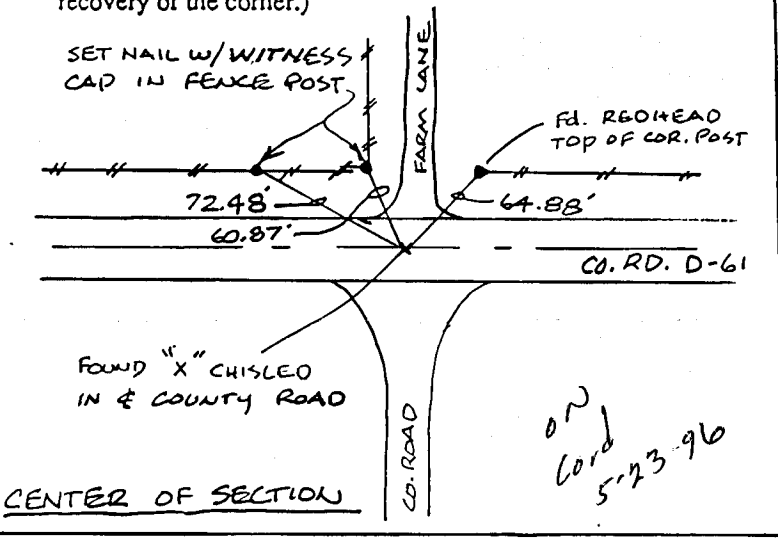
Land Survey Monuments situated in Section TWELVE (12), Township 86 NORTH, Range ONE WEST, of the Fifth Principal Meridian, JONES County, Iowa. Previously recorded in BK 310, P. 183 & BK 317, P. 312 in County Recorder's Office.

(Show reason for preparing this certificate, the evidence and detailed procedures used in establishing the corner positions and monumentation found or placed.)

Monument Description and Remarks: NO CORNER CERTIFICATE'S AT THE RECORDER'S OFFICE OR EXISTING CORNER TIES NO LONGER VALID. CENTER OF SECTION - FOUND "X" CHISELED IN CONC. (USED OLD TIES) NW CORNER NE 1/4, SE 1/4 - SET 1/2" IRON ROD W/ RLS CAP 12642 ON LINE & MIDWAY BETWEEN CENTER OF SECTION & E 1/4 CORNER. SW CORNER NW 1/4, SE 1/4 - SET 1/2" IRON ROD W/ RLS CAP 12642 ON LINE & MIDWAY BETWEEN THE CENTER OF SECTION & THE S 1/4 CORNER. \* SEE BELOW

PLAN - VIEW

(Show a minimum of three reference ties to durable physical objects, relevant monuments and physical conditions that will enable recovery of the corner.)



DATE OF FIELD WORK:

I hereby certify that the survey work was completed and this certificate was prepared by me or under my direct personal supervision and that I am a duly registered land surveyor under the laws of the state of Iowa.

Signature: William H. Burger
Name typed or printed: WILLIAM H. BURGER
Date: 12/13/95 Reg. No. 12642

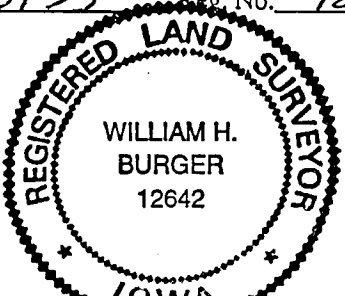


Table with 4 columns: Corners, List Section, Twp, Range. Rows include CENTER 12 86N 1W, NW-NE 1/4, SE 1/4 12 86N 1W, SW-NW 1/4, SE 1/4 12 86N 1W, SE-NE 1/4, SE 1/4 12 86N 1W.

\* SE CORNER NE 1/4, SE 1/4 - SET 1/2" IRON ROD W/ RLS CAP 12642 ON LINE W/ & MIDWAY BETWEEN E 1/4 CORNER AND THE SE CORNER OF SAID SEC. 12.