

Marie Krutzfield, Recorder  
Jones County, Iowa

Prepare's Name: Buesing & Associates

Address: 1212 Locust St. Dubuque, IA

Telephone: (563) 556-4389

SLSI 9-94

UNITED STATES PUBLIC LAND SURVEY CORNER CERTIFICATE

OF

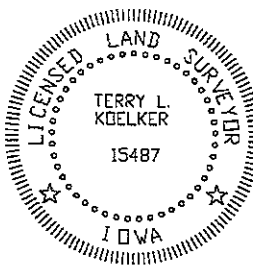
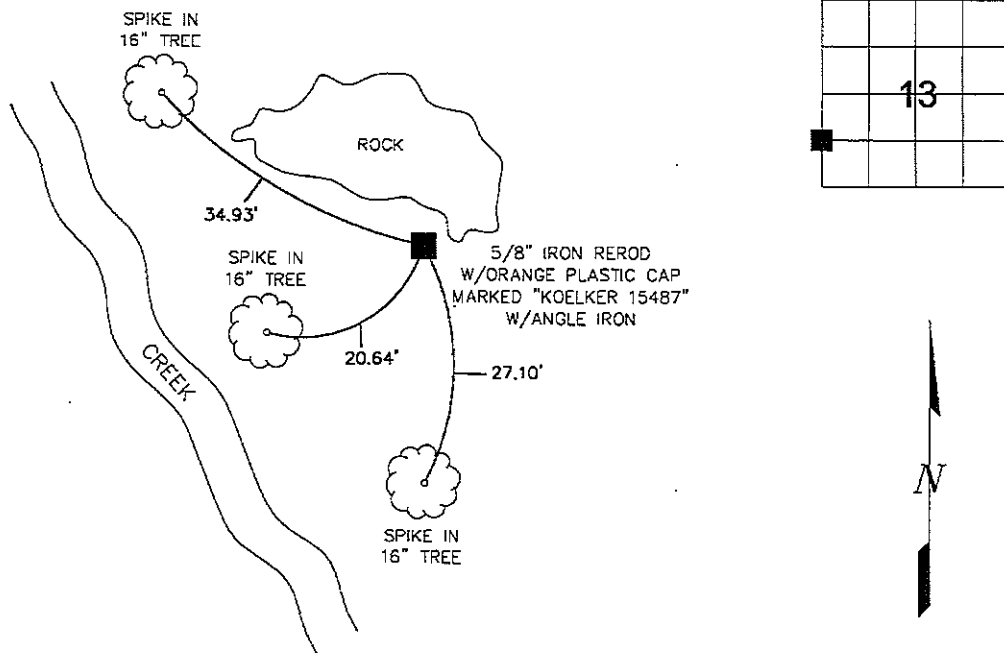
Land Survey Monuments situated in Section 13, Township 86N, Range 1W, of the Fifth Principal Meridian, DUBUQUE County, Iowa.  
Previously recorded in NONE in County Recorder's Office.  
(book, page, document number, etc.)

(Show reason for preparing this certificate, the evidence and detailed procedures used in establishing the corner positions and monumentation found or placed.)

Monument Description and Remarks: PLACED 5/8" IRON REROD W/ORANGE PLASTIC CAP MARKED "KOELKER 15487" W/ANGLE IRON @ THE NW CORNER OF THE SW1/4 SW1/4. EXPOSED 2". ESTABLISHED BY SPLITTING DISTANCE BETWEEN A FENCE TEE FOUND AT THE W1/4 CORNER AND THE SW CORNER.

PLAN - VIEW

(Show a minimum of three reference ties to durable physical objects, relevant monuments and physical conditions that will enable recovery of the corner.)



I HEREBY CERTIFY THAT THIS LAND SURVEYING DOCUMENT WAS PREPARED AND THE RELATED SURVEY WORK WAS PERFORMED BY ME OR UNDER MY DIRECT PERSONAL SUPERVISION AND THAT I AM A DULY LICENSED LAND SURVEYOR UNDER THE LAWS OF THE STATE OF IOWA.

*Terry L. Koelker* 6/12/07  
TERRY L. KOELKER (DATE)

LICENSE NUMBER 15487  
MY LICENSE RENEWAL DATE IS DECEMBER 31, 2007

Corners	Section	Range	Tap
NW COR. OF SW1/4 SW1/4	13	86N	1W

<p><b>BUESING &amp; ASSOCIATES INC.</b> ENGINEERS AND SURVEYORS 1212 LOCUST ST, DUBUQUE, IA (563) 556-4389</p>	MONUMENT RECORD		
	COUNTY: <u>JONES</u>	TOWNSHIP: <u>WASHINGTON</u>	
DATE PLOTTED: 6-11-07	FIELD BOOK # 168	DRAWING # 07062-04	
DATE REVISED:	PAGE # 29		