

THIS IS NOT A CERTIFICATION

H

JONES COUNTY ENGINEER'S OFFICE, 19501 HWY. 64, ANAMOSA, IOWA, 52205 (319)462-3785

UNITED STATES PUBLIC LAND SURVEY CORNER CERTIFICATE

LAND SURVEY MONUMENTS SITUATED IN SECTION 16, TOWNSHIP 86 NORTH, RANGE 1 WEST OF THE 5TH P.M., JONES COUNTY, IOWA

CORNERS TO BE INDEXED

CORNER	SECTION	TOWNSHIP	RANGE
CENTER	16	86N	1W

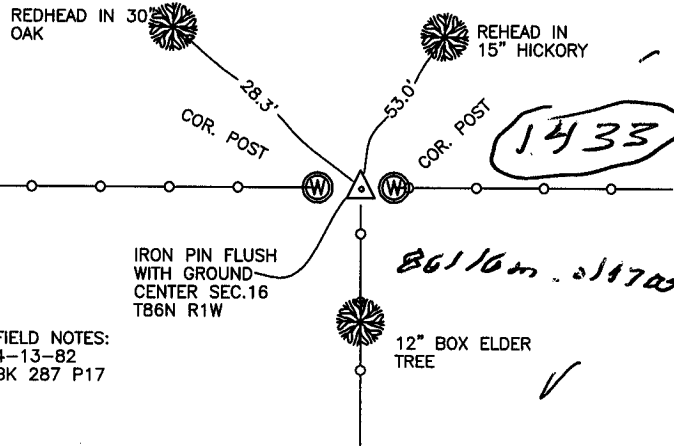


OFFICE FILE NO.

86116m_061404.tif

JONES COUNTY SURVEY CREW:
POSTEL-BARTLE-POWELL-COX

NO SCALE



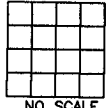
FIELD NOTES:
4-13-82
BK 287 P17

86116m_061404.tif

PREVIOUSLY RECORDED IN BOOK _____, PAGE _____
 MONUMENT DESCRIPTION AND HOW ESTABLISHED _____
 PER TIES ON RECORD AT JONES CO. ENGINEER'S OFFICE, PROBED AROUND
 CORNER POST FOUND NO STONE. SET 1/2"x24" IRON PIN BETWEEN TWO CORNER
 POSTS ON LINE WITH 1/4 SECTION FENCE EAST & WEST & ON LINE WITH 1/4
 SECTION FENCE SOUTH. PIN FLUSH WITH GROUND. TIES AS INDICATED AT CENTER
 SECTION 16 T86N R1W.

CORNERS TO BE INDEXED

CORNER	SECTION	TOWNSHIP	RANGE



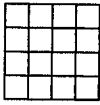
OFFICE FILE NO.

NO SCALE

PREVIOUSLY RECORDED IN BOOK _____, PAGE _____
 MONUMENT DESCRIPTION AND HOW ESTABLISHED _____

CORNERS TO BE INDEXED

CORNER	SECTION	TOWNSHIP	RANGE

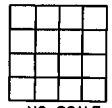


OFFICE FILE NO.

NO SCALE

CORNERS TO BE INDEXED

CORNER	SECTION	TOWNSHIP	RANGE



OFFICE FILE NO.

NO SCALE

PREVIOUSLY RECORDED IN BOOK _____, PAGE _____
 MONUMENT DESCRIPTION AND HOW ESTABLISHED _____

PREVIOUSLY RECORDED IN BOOK _____, PAGE _____
 MONUMENT DESCRIPTION AND HOW ESTABLISHED _____

~~I hereby declare that this plat, survey or report was made by me or under my direct personal supervision and that I am a duly registered Land Surveyor under the laws of the State of Iowa.~~

Signed:

SEAL

JONES COUNTY ENGINEER'S OFFICE

19501 HWY. 64,
ANAMOSA, IOWA,
52205 (319)462-3785