

2006 0153

FILED
RECORDERS OFFICE
JONES COUNTY IOWA

06 JAN 12 AM 11:48

MARIE KRUTZFIELD
RECORDER 76072

Prepared by Wm. Burger Land Surveyors

510 3rd Street West Court, Worthington, Iowa

Phone 563 - 855 2028

UNITED STATES PUBLIC LAND SURVEY CORNER CERTIFICATE

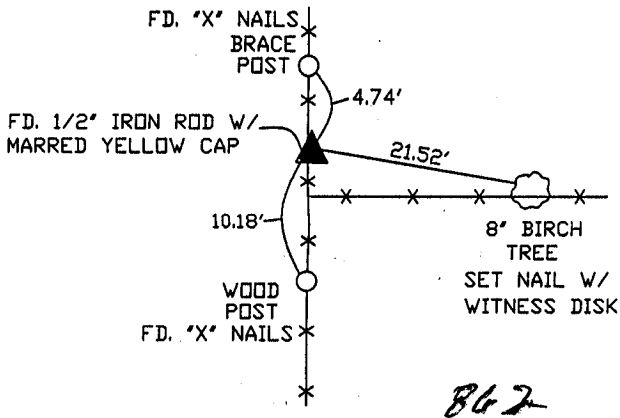
Land Survey Monuments situated in Section 8, Township 86N, Range 1W, of the Fifth Principal Meridian, Jones County, Iowa. Previously recorded in BOOK 293, PAGE 228 in the Office of the County Recorder

Monument Description and Remarks:

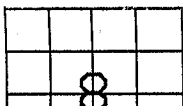
SE CORNER SW1/4 SW1/4 - FOUND 1/2" IRON ROD W/ MARRED YELLOW CAP

PLAN VIEW

SE CORNER SW1/4 SW1/4



861 + 86 - 010006. tid



CORNERS TO BE INDEXED

SE CORNER SW1/4 SW1/4

8

86N

1W

2000 3651
 FILED
 RECORDERS OFFICE
 JONES COUNTY IOWA

00 NOV 30 AM 10:46

MARIE KRUTZFIELD
 RECORDER 6.00 Pd

Prepared by Wm. Burger Land Surveyors 510 3rd Street West Court, Warthington, Iowa Phone 319 - 855 2020

UNITED STATES PUBLIC LAND SURVEY CORNER CERTIFICATE

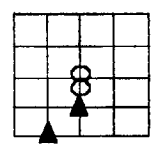
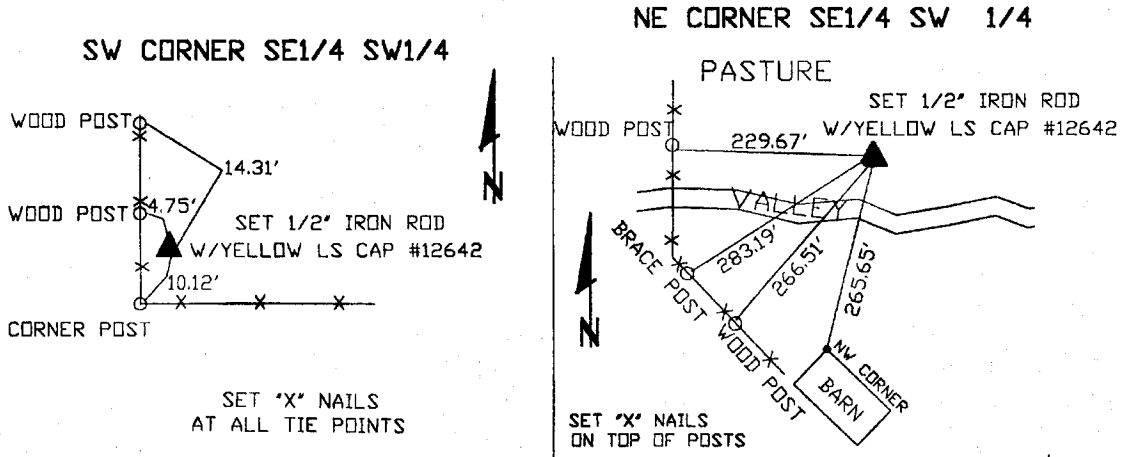
Land Survey Monuments situated in Section 8, Township 86N, Range 1W, of the Fifth Principal Meridian, Jones County, Iowa. Previously recorded in N/A in the Office of the County Recorder

Monument Description and Remarks: (No Corner Certificates Found at the County Recorders Office)

SW CORNER SE1/4 SW1/4 - SET 1/2" IRON ROD W/YELLOW LS CAP #12642 - USED
INFORMATION FROM PLAT LOCATED IN BOOK 293 PAGE 218 IN THE JONES COUNTY
RECORDERS OFFICE

NE CORNER SE1/4 SW1/4 - SET 1/2" IRON ROD W/YELLOW LS CAP #12642 - SET ON LINE
AND MIDWAY BETWEEN THE CENTER OF SECTION AND THE S1/4 CORNER

PLAN VIEW



SEAL SEC. 8 TWP. 86N RANGE 1W

I hereby certify that this land surveying document was prepared and related survey work was performed by me or under my direct personal supervision and that I am a duly licensed Land Surveyor under the laws of the State of Iowa.

William H. Burger 11/27/2000
 William H. Burger Date

License number 12642
 My license renewal date is December 31, 2000
 Pages or Sheets covered by this seal Sheet 1 of 1

CORNERS TO BE INDEXED		
NE CORNER SE1/4 SW1/4	8	86N 1W
SW CORNER SE1/4 SW1/4	8	86N 1W

UNITED STATES PUBLIC LAND SURVEY CORNER CERTIFICATE

OF

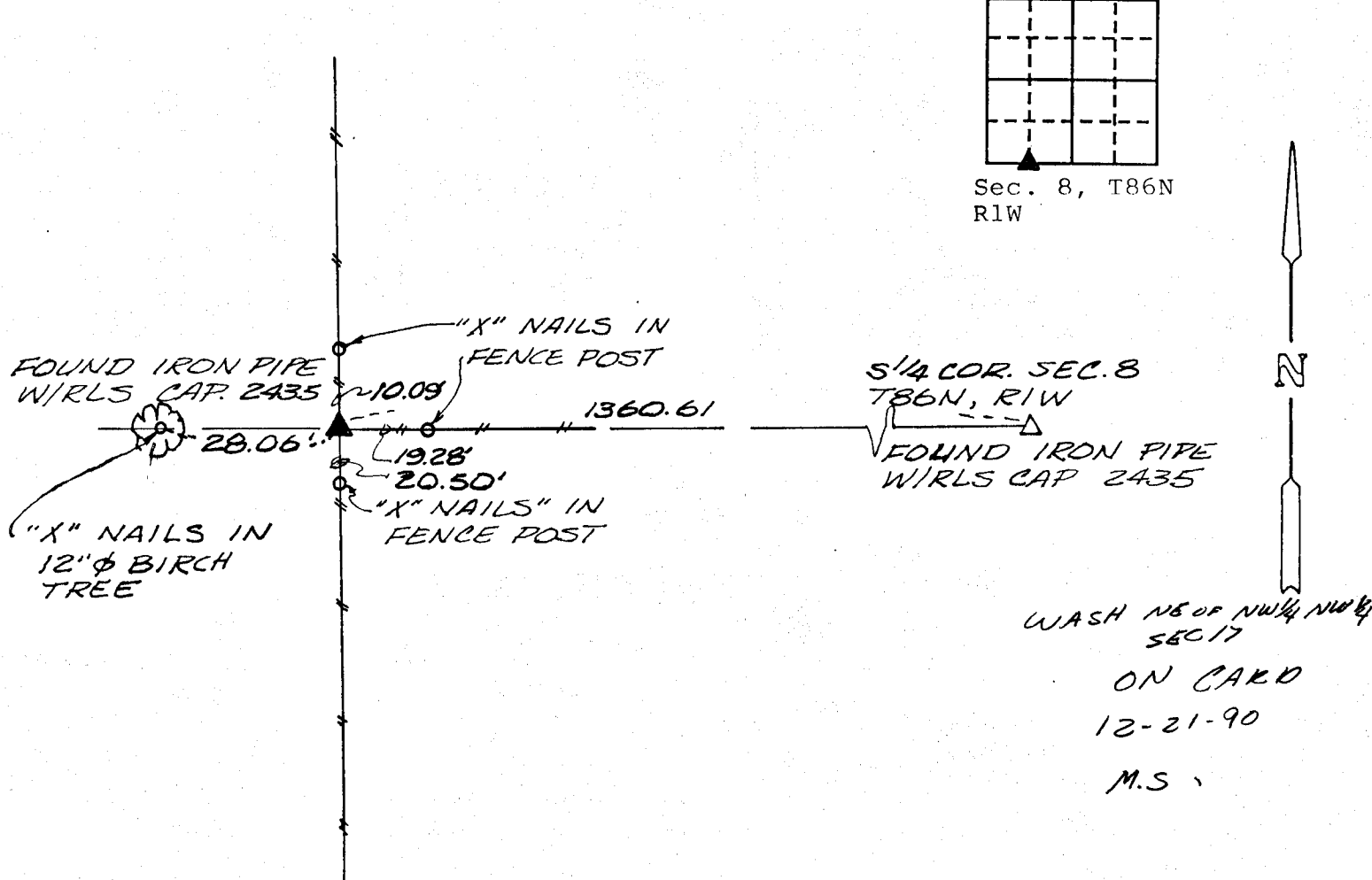
Land Survey Monuments situated in Section Eight (8), Township 86 North, Range 1 West, of the Fifth Principal Meridian, Jones County, Iowa.
Previously recorded in Book ---, Page ---.

(Show reason for preparing this certificate, the evidence and detailed procedures used in establishing the corner positions and monumentation found or placed.)

Monument Description and Remarks: No certificate recorded in Recorder's Office
Found iron pipe with RLS Cap No. 2435, see Book H, Page 82.

PLAN - VIEW

(Show a minimum of three reference ties to durable physical objects, relevant monuments and physical conditions that will enable recovery of the corner.)



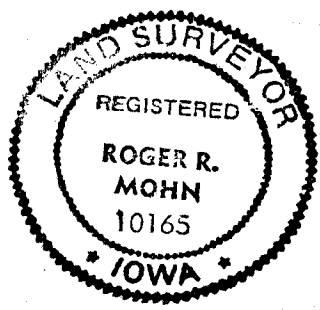
DATE OF FIELD WORK: September 21, 1990

TSE NO. 90-02

I hereby certify that the survey work was completed and this certificate was prepared by me or under my direct personal supervision and that I am a duly registered land surveyor under the laws of the state of Iowa.

Roger R. Mohn September 25, 1990
REGISTERED LAND SURVEYOR NO. 10165 DATE

SEAL



List Corners to be Indexed

Corners	Section	Twp	Range
SE of SW 1/4 SW 1/4	8	86N	1W
SW of SE 1/4 SW 1/4	8	86N	1W
<u>NE of NW 1/4 NW 1/4</u>	<u>17</u>	86N	1W
NW of NE 1/4 NW 1/4	17	86N	1W