

UNITED STATES PUBLIC LAND SURVEY CORNER CERTIFICATE

OF

Land Survey Monuments situated in Section Eight (8), Township 86 North, Range 1 West, of the Fifth Principal Meridian, Jones County, Iowa.
Previously recorded in Book ---, Page ---

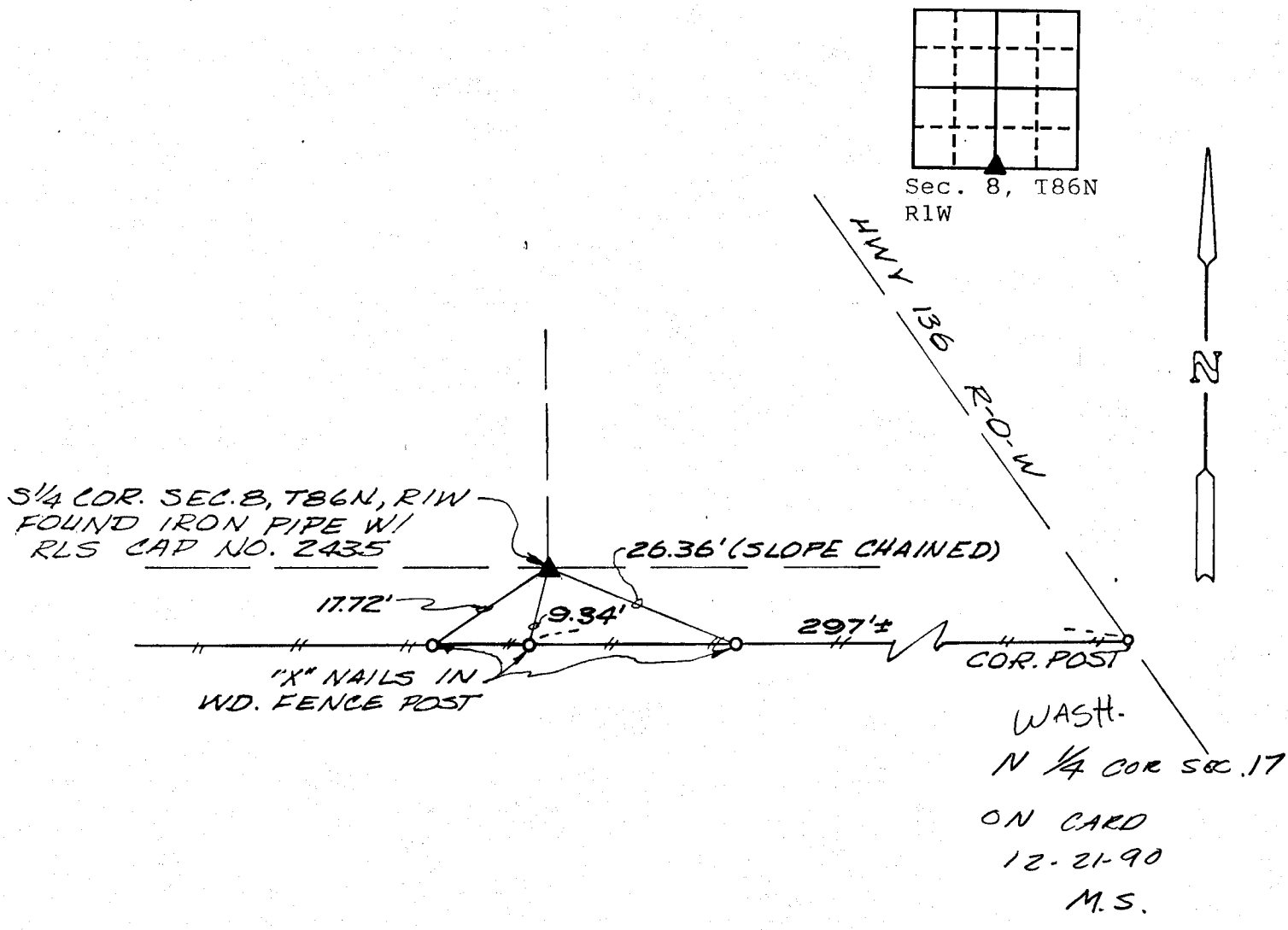
(Show reason for preparing this certificate, the evidence and detailed procedures used in establishing the corner positions and monumentation found or placed.)

Monument Description and Remarks: No certificate recorded in Recorder's Office.

Found iron pipe with RLS Cap No. 2435, see Book H, Page 82.

PLAN - VIEW

(Show a minimum of three reference ties to durable physical objects, relevant monuments and physical conditions that will enable recovery of the corner.)



DATE OF FIELD WORK: September 21, 1990

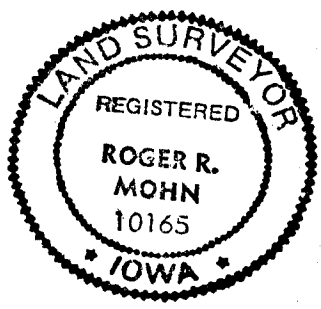
TSE NO. 90-02

I hereby certify that the survey work was completed and this certificate was prepared by me or under my direct personal supervision and that I am a duly registered land surveyor under the laws of the state of Iowa.

Roger R. Mohn September 25, 1990
DATE

REGISTERED LAND SURVEYOR NO. 10165

SEAL



List Corners to be Indexed

Corners	Section	Twp	Range
S 1/4	8	86N	1W
N 1/4	17	86N	1W