

2001 1685

FILED
RECORDERS OFFICE
JONES COUNTY IOWA

01 MAY 21 AM 10:03

MARIE KRUTZFIELD
RECORDER No Fee

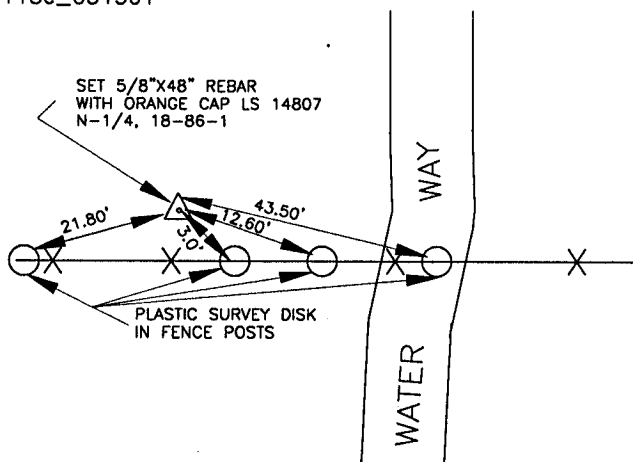
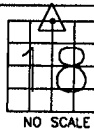
J.D. TJEPKES, L.S. JONES COUNTY ENGINEER'S OFFICE, 19501 HWY. 64, ANAMOSA, IOWA, 52205 (319)462-3785

UNITED STATES PUBLIC LAND SURVEY CORNER CERTIFICATE

LAND SURVEY MONUMENTS SITUATED IN SECTION 18, TOWNSHIP 86
NORTH, RANGE 1 WEST OF THE 5TH P.M., JONES COUNTY, IOWA

965 CORNERS TO BE INDEXED

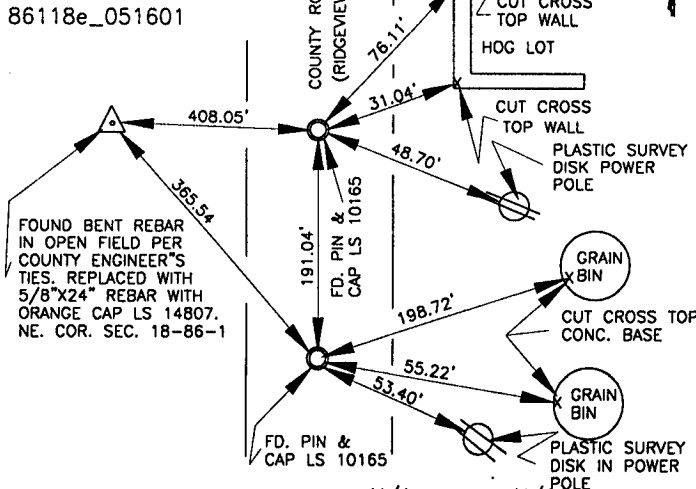
CORNER SECTION TOWNSHIP RANGE
NORTH-1/4 18 86N 1W
OFFICE FILE NO. 86118c_051501



PREVIOUSLY RECORDED IN BOOK N/A, PAGE N/A
MONUMENT DESCRIPTION AND HOW ESTABLISHED SET 5/8"x
24" REBAR WITH ORANGE CAP LS 14807 AT PRORATED DISTANCE FOR
CLOSING SECTION BETWEEN NORTHEAST CORNER AND NORTHWEST CORNER
SECTION 18, TOWNSHIP 86 NORTH, RANGE 1 WEST, 5TH PRINCIPAL MERIDIAN
JONES COUNTY, IOWA. SET REFERENCE POINTS AND TIED OUT AS INDICATED.

883 CORNERS TO BE INDEXED

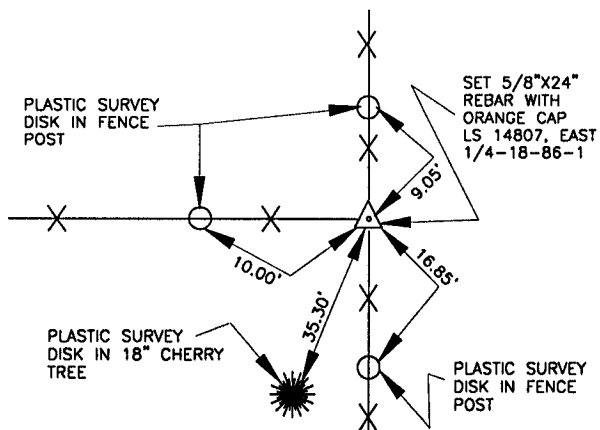
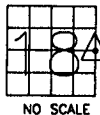
CORNER SECTION TOWNSHIP RANGE
NORTHEAST 18 86N 1WEST
OFFICE FILE NO. 86118e_051601



PREVIOUSLY RECORDED IN BOOK N/A, PAGE N/A
MONUMENT DESCRIPTION AND HOW ESTABLISHED FOUND #5
BENT REBAR IN OPEN FIELD PER COUNTY ENGINEER'S TIES, REPLACED WITH
5/8"x24" REBAR WITH ORANGE CAP LS 14807 18" BELOW SURFACE. SET
NEW REFERENCE POINTS AND TIED OUT AS INDICATED. NORTHEAST CORNER
SECTION 18, TOWNSHIP 86 NORTH, RANGE 1 WEST OF 5TH PRINCIPAL
MERIDIAN, JONES COUNTY, IOWA.

966 CORNERS TO BE INDEXED

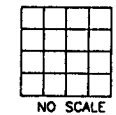
CORNER SECTION TOWNSHIP RANGE
EAST 1/4 18 86N 1W
OFFICE FILE NO. 86118o_051601



PREVIOUSLY RECORDED IN BOOK N/A, PAGE N/A
MONUMENT DESCRIPTION AND HOW ESTABLISHED SET 5/8"x24"
REBAR WITH ORANGE CAP LS 14807 AT INTERSECTION OF NORTH-SOUTH
FENCE AND WEST FENCE. GOOD POSITION WITHIN SECTIONS IN AREA. SET
REFERENCE POINTS AND TIED OUT AS INDICATED. EAST QUARTER CORNER
SECTION 18, TOWNSHIP 86 NORTH, RANGE 1 WEST, JONES COUNTY, IOWA

CORNERS TO BE INDEXED

CORNER SECTION TOWNSHIP RANGE
OFFICE FILE NO.



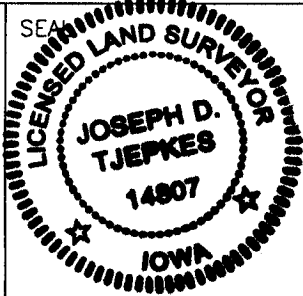
PREVIOUSLY RECORDED IN BOOK _____, PAGE _____
MONUMENT DESCRIPTION AND HOW ESTABLISHED _____

I hereby declare that this plat, survey or report was made by me or under my direct personal supervision and that I am a duly registered Land Surveyor under the laws of the State of Iowa.

Signed:

Joseph D. Tjepkes 5-16-01

Joseph D. Tjepkes L.S. Iowa Reg. No. 14807
My Registration Renewal Date is December 31, 2002



J.D. TJEPKES LS 14807
JONES COUNTY
ENGINEER'S OFFICE

19501 HWY. 64,
ANAMOSA, IOWA,
52205 (319)462-3785