

2001 1685

FILED
RECORDERS OFFICE
JONES COUNTY IOWA

01 MAY 21 AM 10:03

MARIE KRUTZFIELD
RECORDER No Fee

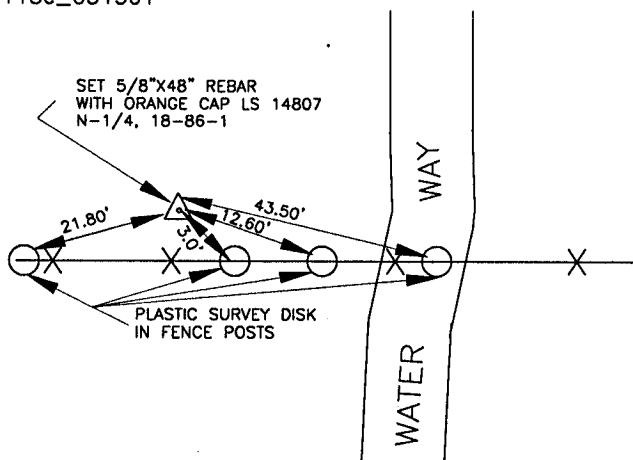
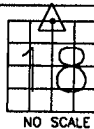
J.D. TJEPKES, LS. JONES COUNTY ENGINEER'S OFFICE, 19501 HWY. 64, ANAMOSA, IOWA, 52205 (319)462-3785

UNITED STATES PUBLIC LAND SURVEY CORNER CERTIFICATE

LAND SURVEY MONUMENTS SITUATED IN SECTION 18, TOWNSHIP 86
NORTH, RANGE 1 WEST OF THE 5TH P.M., JONES COUNTY, IOWA

965 CORNERS TO BE INDEXED

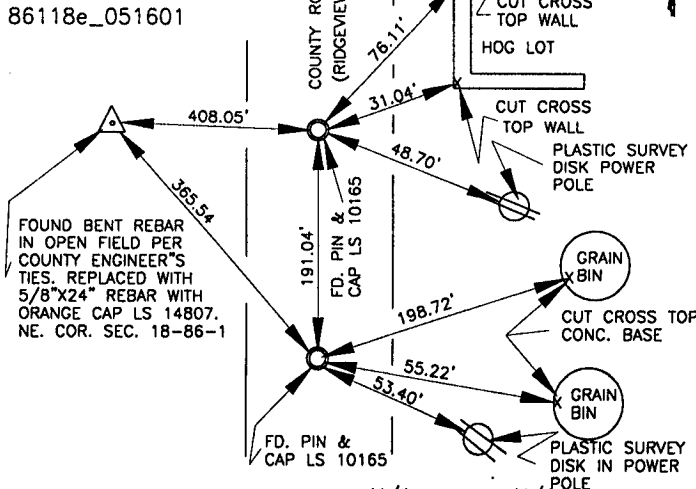
CORNER SECTION TOWNSHIP RANGE
NORTH-1/4 18 86N 1W
OFFICE FILE NO.
86118c_051501



PREVIOUSLY RECORDED IN BOOK N/A, PAGE N/A
MONUMENT DESCRIPTION AND HOW ESTABLISHED SET 5/8\"/>

883 CORNERS TO BE INDEXED

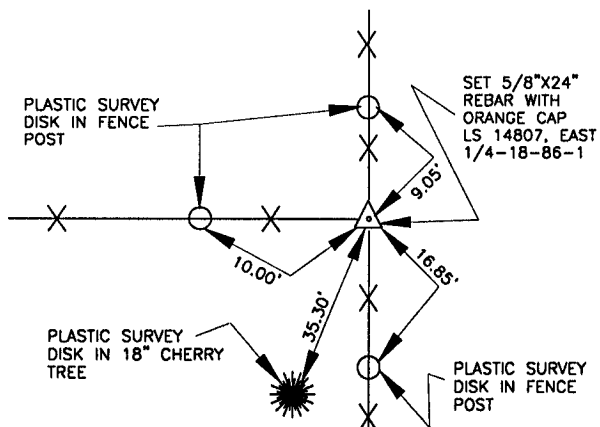
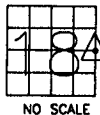
CORNER SECTION TOWNSHIP RANGE
NORTHEAST 18 86N 1WEST
OFFICE FILE NO.
86118e_051601



PREVIOUSLY RECORDED IN BOOK N/A, PAGE N/A
MONUMENT DESCRIPTION AND HOW ESTABLISHED FOUND #5
BENT REBAR IN OPEN FIELD PER COUNTY ENGINEER'S TIES, REPLACED WITH
5/8\"/>

966 CORNERS TO BE INDEXED

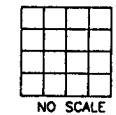
CORNER SECTION TOWNSHIP RANGE
EAST 1/4 18 86N 1W
OFFICE FILE NO.
86118o_051601



PREVIOUSLY RECORDED IN BOOK N/A, PAGE N/A
MONUMENT DESCRIPTION AND HOW ESTABLISHED SET 5/8\"/>

CORNERS TO BE INDEXED

CORNER SECTION TOWNSHIP RANGE
OFFICE FILE NO.



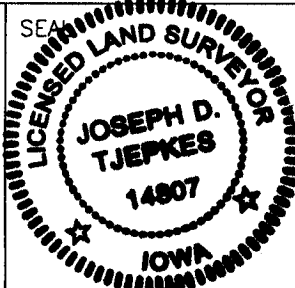
PREVIOUSLY RECORDED IN BOOK _____, PAGE _____
MONUMENT DESCRIPTION AND HOW ESTABLISHED _____

I hereby declare that this plat, survey or report was made by me or under my direct personal supervision and that I am a duly registered Land Surveyor under the laws of the State of Iowa.

Signed:

Joseph D. Tjepkes 5-16-01

Joseph D. Tjepkes L.S. Iowa Reg. No. 14807
My Registration Renewal Date is December 31, 2002



J.D. TJEPKES LS 14807
JONES COUNTY
ENGINEER'S OFFICE

19501 HWY. 64,
ANAMOSA, IOWA,
52205 (319)462-3785

UNITED STATES PUBLIC LAND SURVEY CORNER CERTIFICATE

OF

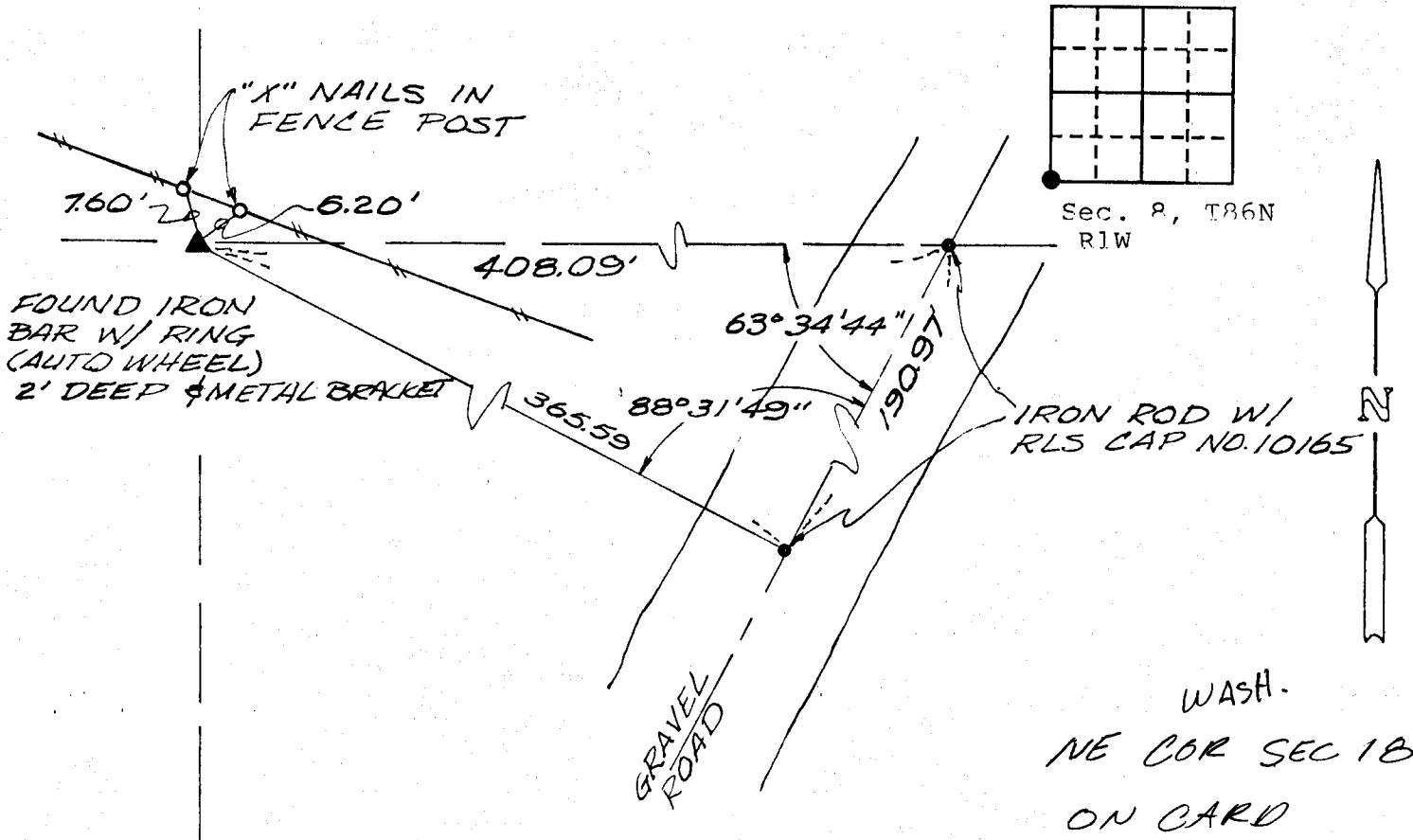
Land Survey Monuments situated in Section 8, Township 86 North, Range 1 West, of the Fifth Principal Meridian, Jones County, Iowa.
Previously recorded in Book ---, Page ---.

(Show reason for preparing this certificate, the evidence and detailed procedures used in establishing the corner positions and monumentation found or placed.)

Monument Description and Remarks: Found iron rod with ring (auto wheel) around it, approximately 2 foot deep. No certificate of record in Recorder's office. Fences shown in old corner ties (1939) had been removed.

PLAN - VIEW

(Show a minimum of three reference ties to durable physical objects, relevant monuments and physical conditions that will enable recovery of the corner.)



WASH.
NE COR SEC 18
ON CARD
12-21-90
M.S.

Date of Field Work: March 6, 1990

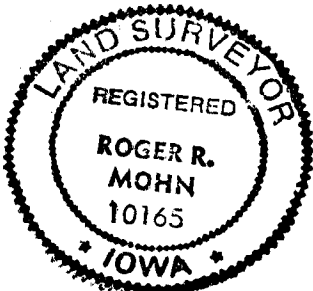
TSE No. 90-02

I hereby certify that the survey work was completed and this certificate was prepared by me or under my direct personal supervision and that I am a duly registered land surveyor under the laws of the state of Iowa.

Roger R. Mohn September 25, 1990
DATE

REGISTERED LAND SURVEYOR NO. 10165

SEAL



List Corners to be Indexed

Corners	Section	Twp	Range
SW	8	86N	1W
SE	7	86N	1W
NW	17	86N	1W
NE	18	86N	1W