

RECEIVED
FEB 20 1998
JONES COUNTY ENGINEER

COPY

PREPARED BY WM. BURGER LANDSURVEYORS 510 3RD STREET WEST COURT, WORTHINGTON, IOWA 52078 PHONE (319) 855 2028

UNITED STATES PUBLIC LAND SURVEY CORNER CERTIFICATE

LAND SURVEY MONUMENT SITUATED IN SECTION 15, TOWNSHIP 86N, RANGE 1W, OF THE FIFTH PRINCIPAL MERIDIAN, JONES COUNTY, IOWA. PREVIOUSLY RECORDED IN --- IN COUNTY RECORDER'S OFFICE

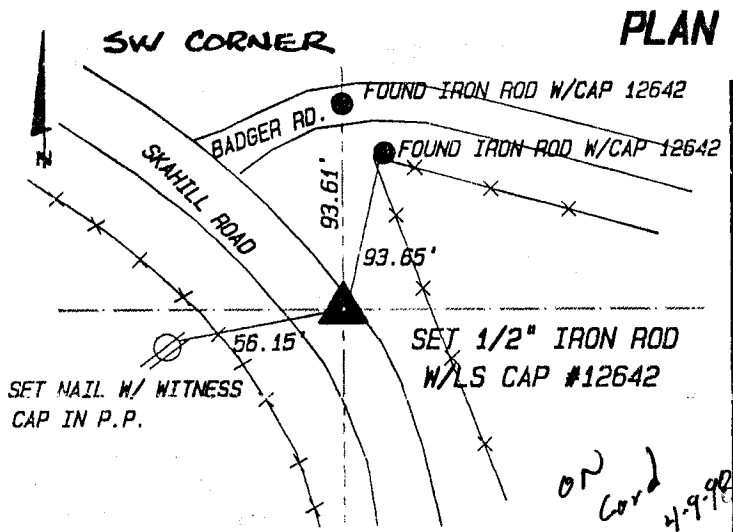
MONUMENT DESCRIPTION AND REMARKS: (NO CORNER CERTIFICATES FOUND AT THE COUNTY RECORDERS OFFICE)

SW CORNER - SET 1/2" IRON ROD W/LS CAP #12642 -- NO MONUMENTS AVAILABLE TO RELOCATE THIS CORNER

USED FENCELINE EVIDENCE TO ESTABLISH THIS CORNER

SE CORNER SW1/4 SW1/4 - SET 1/2" IRON ROD W/LS CAP #12642 -- NO MONUMENTS AVAILABLE TO RELOCATE THIS CORNER

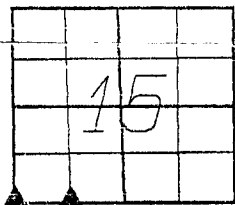
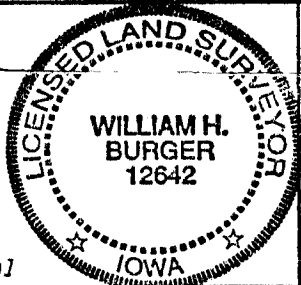
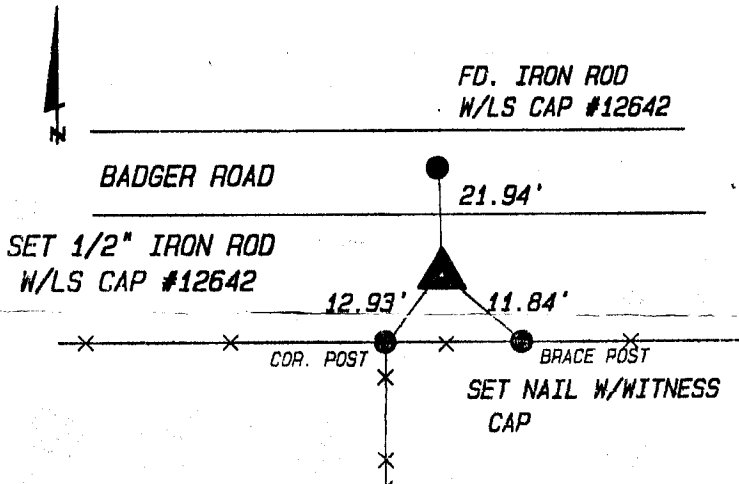
USED FENCELINE EVIDENCE TO ESTABLISH THIS CORNER



NE 21

OP cord

SE CORNER SW1/4 SW1/4 Sec. ~~15~~ 15



Sec. 15 TWP. 86N Range 1W

I hereby certify that this land surveying document was prepared and related survey work was performed by me or under my direct personal supervision and that I am a duly licensed Land Surveyor under the laws of the State of Iowa.

William H. Burger 2/18/98
 William H. Burger Date
 License number 12642
 My license renewal date is December 31, 1998
 Pages or Sheet covered by this seal: Sheet 1 of 1

CORNERS TO BE INDEXED

CORNER	SECTION	TWP.	RANGE
SW	15	86N	1W
SE SW1/4 SW1/4	15	86N	1W
	SECTION	TWP.	RANGE
	SECTION	TWP.	RANGE