

Instrument #: 2018-3514
 12/31/2018 12:09:45 PM Total Pages: 1
 ZSC SECTION CORNER CERTIFICATE
 Recording Fee: \$7.00 Transfer Tax: \$0
 Sheri L. Jones, Recorder, Jones County Iowa



PREPARED BY: MICHAEL J. WEBER, WEBER SURVEYING, LLC, 26789 46TH AVE, BERNARD, IA 52032 (563) 879-4173

UNITED STATES PUBLIC LAND SURVEY CORNER CERTIFICATE OF
 LAND SURVEY MONUMENTS SITUATED IN SECTION 14, TOWNSHIP 86 NORTH, RANGE 1 WEST
 OF THE FIFTH PRINCIPAL MERIDIAN, JONES COUNTY, IOWA.
 PREVIOUSLY RECORDED SEE NOTES BELOW

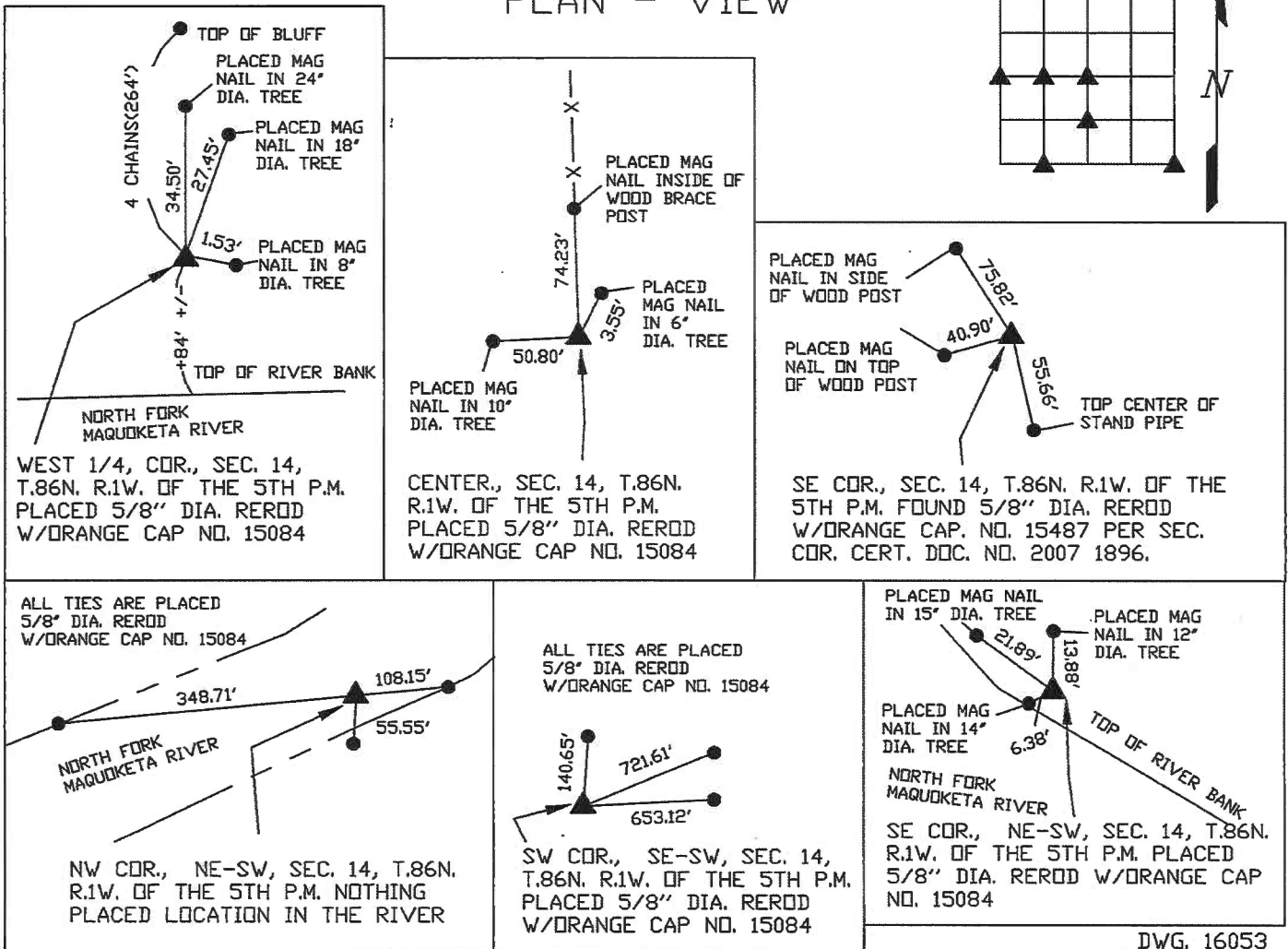
(book, page, document number, etc.)

Monument Description and Remarks:

-WEST 1/4 COR., PLACED 5/8" DIA. REROD W/ORANGE CAP NO. 15084. ESTABLISHED CORNER
 INLINE WITH A NORTH SOUTH OCCUPATION FENCE AND A DISTANCE OF 4 CHAINS(264')
 SOUTH OF THE TOP OF BLUFF NORTH OF THE NORTH FORK MAQUOKETA RIVER AS NOTED IN
 THE ORIGINAL GOVERNMENT SURVEY NOTES.
 -CENTER, PLACED 5/8" DIA. REROD W/ORANGE CAP NO. 15084. ESTABLISHED CORNER AT THE
 INTERSECTION OF THE OCCUPATION FENCE EXTENDED FROM THE NORTH WITH THE LINE
 BETWEEN THE WEST 1/4 AND EAST 1/4 CORNERS OF SAID SECTION 14.
 -NW COR., NE-SW, NOTHING PLACED LOCATION IS IN THE RIVER. ESTABLISHED CORNER
 ONLINE AND MIDWAY BETWEEN THE WEST 1/4 COR., AND THE CENTER OF SAID SEC. 14.
 -SW COR., PLACED 5/8" DIA. REROD W/ORANGE CAP NO. 15084. ESTABLISHED CORNER
 ONLINE AND MIDWAY BETWEEN THE SW COR., AND THE SOUTH 1/4 COR. OF SAID SEC. 14.
 -SE COR., NE-SW, PLACED 5/8" DIA. REROD W/ORANGE CAP NO. 15084. ESTABLISHED CORNER
 ONLINE AND MIDWAY BETWEEN THE CENTER AND THE SOUTH 1/4 COR. OF SAID SEC. 14.
 -SE COR., FOUND 5/8" DIA. REROD W/ORANGE CAP NO. 15487 PREVIOUSLY RECORDED IN
 INST. NO. 2007 1896. ESTABLISHED NEW TIES.

(Show a minimum of three reference ties to durable physical objects, relevant monuments and physical conditions that will enable recovery of the corner.)

PLAN - VIEW



ALL TIES ARE PLACED
 5/8" DIA. REROD
 W/ORANGE CAP NO. 15084

NORTH FORK
 MAQUOKETA RIVER

NW COR., NE-SW, SEC. 14, T.86N.
 R.1W. OF THE 5TH P.M. NOTHING
 PLACED LOCATION IN THE RIVER

ALL TIES ARE PLACED
 5/8" DIA. REROD
 W/ORANGE CAP NO. 15084

SW COR., SE-SW, SEC. 14,
 T.86N. R.1W. OF THE 5TH P.M.
 PLACED 5/8" DIA. REROD
 W/ORANGE CAP NO. 15084

PLACED MAG NAIL
 IN 15" DIA. TREE

PLACED MAG
 NAIL IN 12"
 DIA. TREE

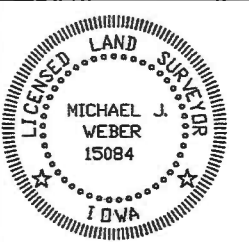
PLACED MAG
 NAIL IN 14"
 DIA. TREE

NORTH FORK
 MAQUOKETA RIVER

TOP OF RIVER BANK

SE COR., NE-SW, SEC. 14, T.86N.
 R.1W. OF THE 5TH P.M. PLACED
 5/8" DIA. REROD W/ORANGE CAP
 NO. 15084

DWG. 16053



I HEREBY CERTIFY THAT THIS LAND SURVEYING DOCUMENT WAS
 PREPARED AND THE RELATED SURVEY WORK WAS PERFORMED BY ME OR
 UNDER MY DIRECT PERSONAL SUPERVISION AND THAT I AM A DULY
 LICENSED LAND SURVEYOR UNDER THE LAWS OF THE STATE OF IOWA.
Michael J. Weber December 27, 2018
 MICHAEL J. WEBER (DATE)
 LICENSE NUMBER 15084
 MY LICENSE RENEWAL DATE IS DECEMBER 31, 2019
 SHEETS COVERED BY THIS SEAL: *This Sheet*

List Corners to be Indexed

Corner	Sec	Twp	Range
WEST 1/4 COR.	14	86N	1W
CENTER	14	86N	1W
NW COR., NE-SW	14	86N	1W
SW COR., SE-SW	14	86N	1W
SE COR., NE-SW	14	86N	1W
SE COR.,	14	86N	1W

FEEBOOK: 2007 1896
 REC FEES: \$7.00 6/13/2007 9:51 AM
 PAGES: 1

Marie Krutzfield, Recorder
 Jones County, Iowa

Prepare's Name: Buesing & Associates Address: 1212 Locust St. Dubuque, IA Telephone: (563) 556-4389

SLSI 9-94

UNITED STATES PUBLIC LAND SURVEY CORNER CERTIFICATE
 OF

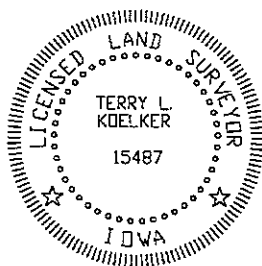
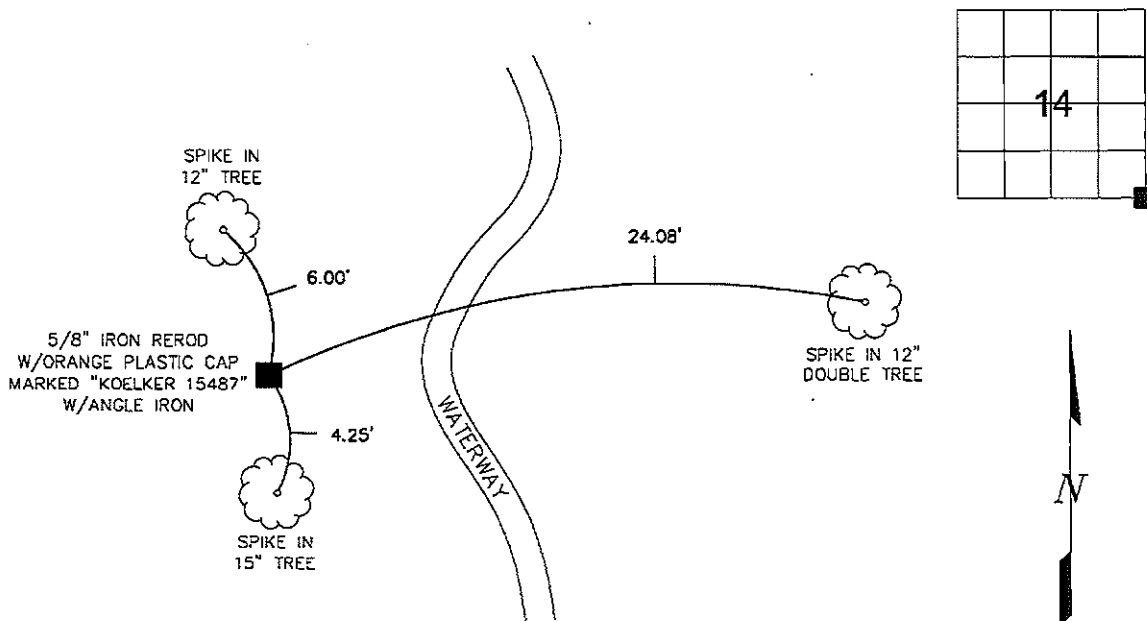
Land Survey Monuments situated in Section 14, Township 86N, Range 1W, of the Fifth Principal Meridian, DUBUQUE County, Iowa.
 Previously recorded in NONE in County Recorder's Office.
(book, page, document number, etc.)

(Show reason for preparing this certificate, the evidence and detailed procedures used in establishing the corner positions and monumentation found or placed.)

Monument Description and Remarks: PLACED 5/8" IRON REROD W/ORANGE PLASTIC CAP MARKED "KOELKER 15487" W/ANGLE IRON @ THE SE CORNER OF THE SE1/4 SE1/4. FLUSH WITH GROUND. ESTABLISHED BY DOUBLING DISTANCE FROM E1/4 CORNER TO THE SE CORNER OF THE NE1/4 NE1/4, BOTH OF SECTION 23, T86N, R1W

PLAN - VIEW

(Show a minimum of three reference ties to durable physical objects, relevant monuments and physical conditions that will enable recovery of the corner.)



I HEREBY CERTIFY THAT THIS LAND SURVEYING DOCUMENT WAS PREPARED AND THE RELATED SURVEY WORK WAS PERFORMED BY ME OR UNDER MY DIRECT PERSONAL SUPERVISION AND THAT I AM A DULY LICENSED LAND SURVEYOR UNDER THE LAWS OF THE STATE OF IOWA.

Terry L. Koelker 6/12/07
 TERRY L. KOELKER (DATE)

LICENSE NUMBER 15487
 MY LICENSE RENEWAL DATE IS DECEMBER 31, 2007

List Corners	Section	Twp	Range
SE COR. OF SE1/4 SE1/4	14	86N	1W

BUESING ASSOCIATES INC. ENGINEERS AND SURVEYORS, 1212 LOCUST ST, DUBUQUE, IA (563) 556-4389	MONUMENT RECORD		
	COUNTY: <u>JONES</u>	TOWNSHIP: <u>WASHINGTON</u>	
DATE PLOTTED: 6-11-07	FIELD BOOK # 168	DRAWING # 07062-04	
DATE REVISED:	PAGE # 29		