

2003 1163

FILED
RECORDERS OFFICE
JONES COUNTY IOWA

03 MAR 18 PM 2:43

MARIE KRUTZFIELD
RECORDER 6.00 pd

Prepared by Wm. Burger Land Surveyors

510 3rd Street West Court, Worthington, Iowa

Phone 319 - 855 2028

UNITED STATES PUBLIC LAND SURVEY CORNER CERTIFICATE

Land Survey Monuments situated in Section 24, Township 86N, Range 1W, of the Fifth Principal Meridian, Jones County, Iowa. Previously recorded in N/A in the Office of the County Recorder

Monument Description and Remarks: (No Corner Certificates found at the County Recorders Office)

SE CORNER - SET 1/2" IRON ROD W/YELLOW LS CAP #12642 - FD. NAIL AND REPLACED IT WITH 1/2" IRON ROD W/YELLOW LS CAP #12642 -

E1/4 CORNER - SET 1/2" IRON ROD W/YELLOW LS CAP #12642 - USED EXISTING ROAD ROAD INFORMATION AND SET THIS CORNER ON CENTERLINE OF TWO ROADS, METAL DETECTED AREA BUT NOTHING WAS FOUND

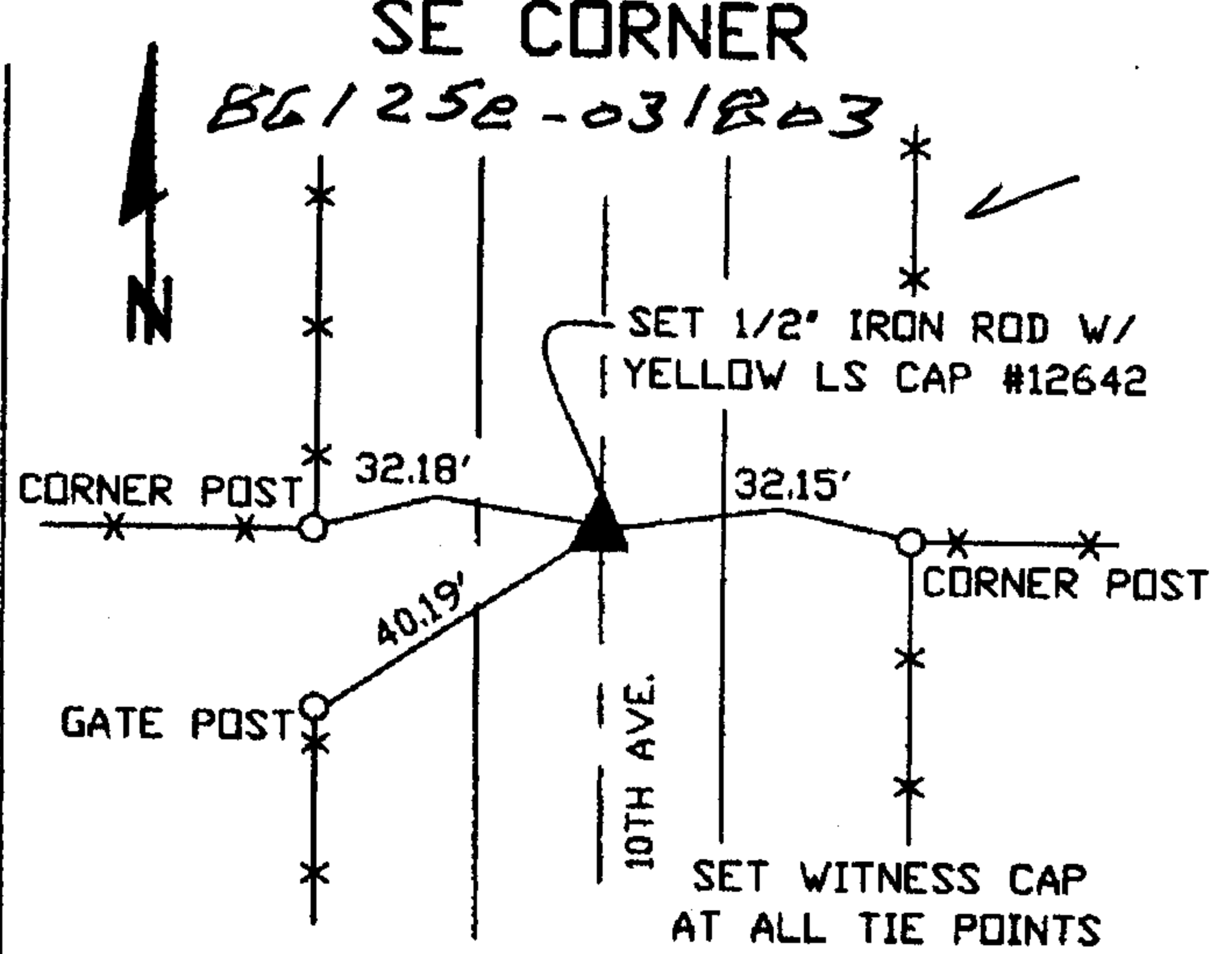
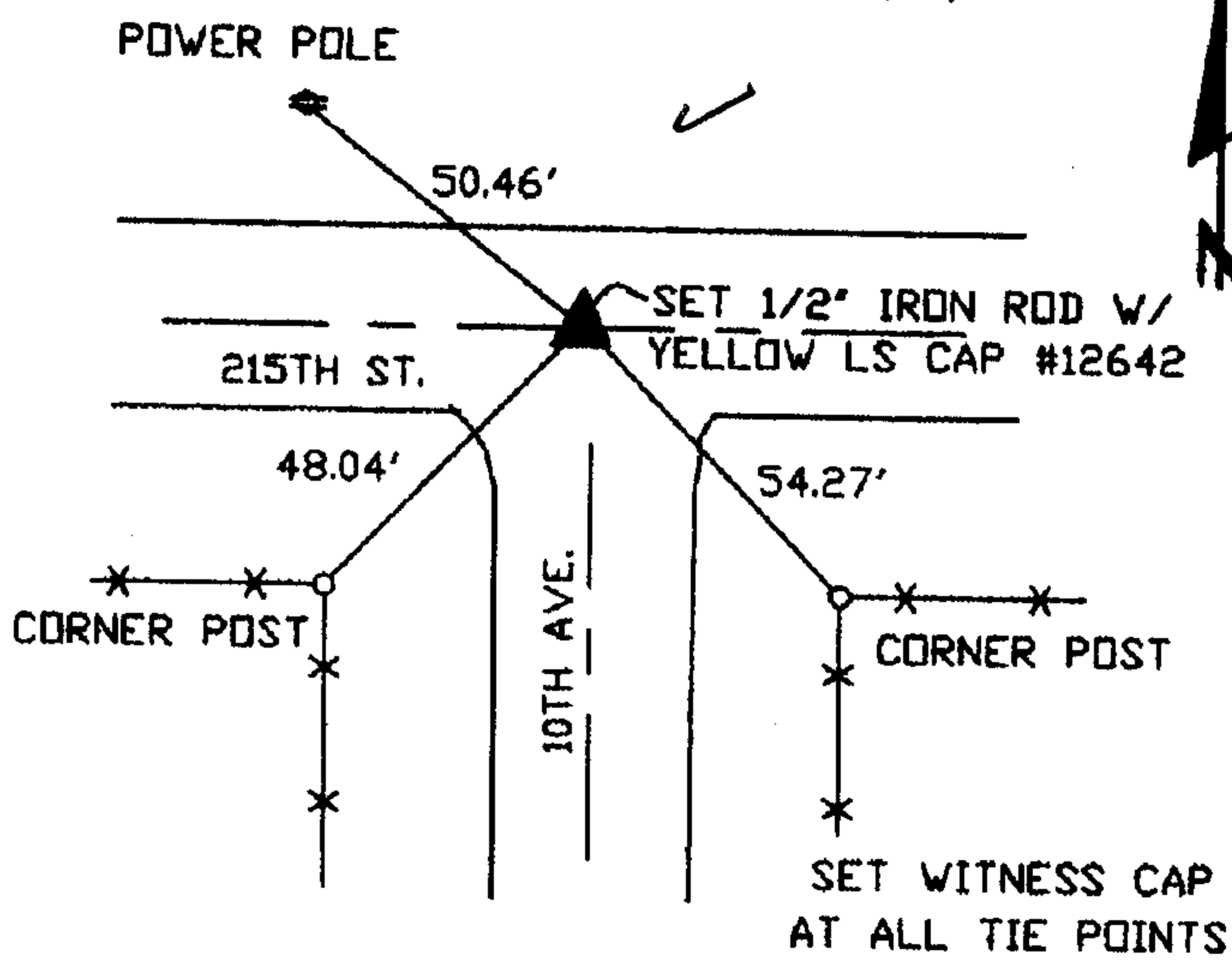
861240-031803

E1/4 CORNER

PLAN VIEW NE 25-86.1

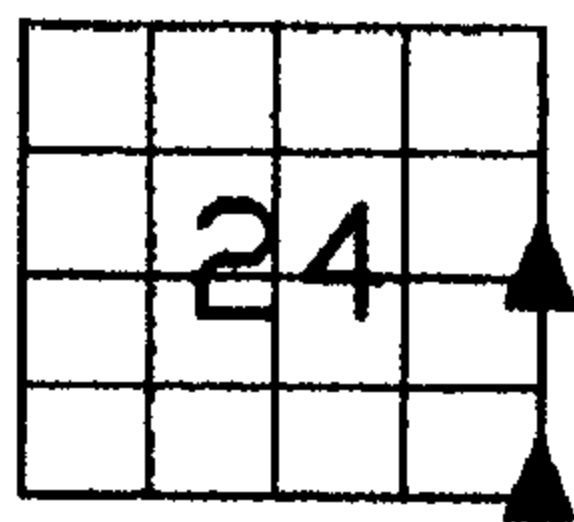
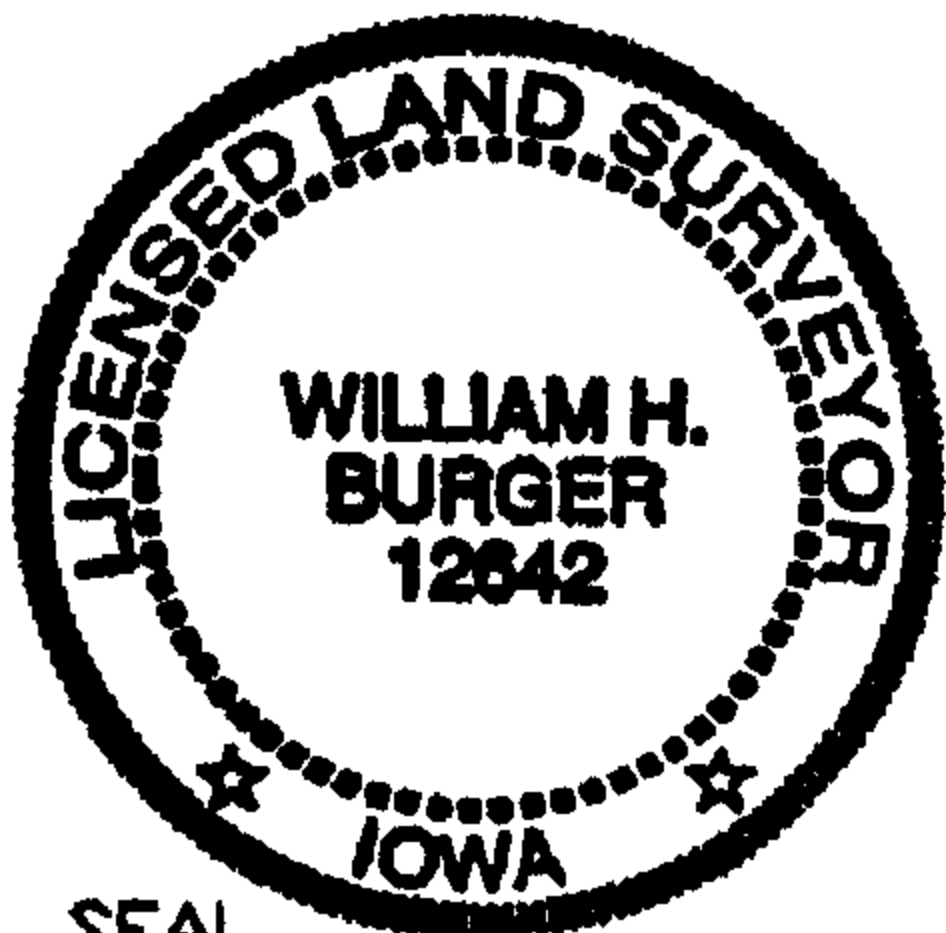
SE CORNER

861250-031803



1408

1409



SEAL

SEC. 24 TWP. 86N RANGE 1W

I hereby certify that this land surveying document was prepared and related survey work was performed by me or under my direct personal supervision and that I am a duly licensed Land Surveyor under the laws of the State of Iowa.

William H. Burger 3/18/03
William H. Burger Date

License number 12642

My license renewal date is December 31, 2004

Pages or Sheets covered by this seal: Sheet 1 of 1

CORNERS TO BE INDEXED

SE CORNER	24	86N	1W
E1/4 CORNER	24	86N	1W

0