

01 AUG -6 AM 8:24

MARIE KRUTZFIELD  
 RECORDER NO FEE

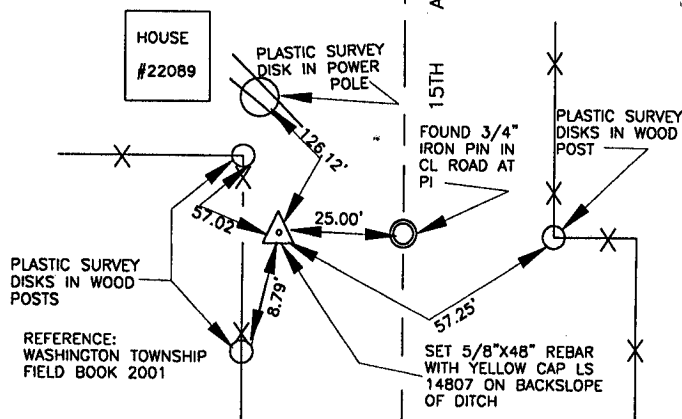
J.D. TJEPKES, LS. JONES COUNTY ENGINEER'S OFFICE, 19501 HWY. 64, ANAMOSA, IOWA, 52205 (319)462-3785

# UNITED STATES PUBLIC LAND SURVEY CORNER CERTIFICATE

LAND SURVEY MONUMENTS SITUATED IN SECTION 24, TOWNSHIP 86  
 NORTH, RANGE 1 WEST OF THE 5TH P.M., JONES COUNTY, IOWA

## 967 CORNERS TO BE INDEXED

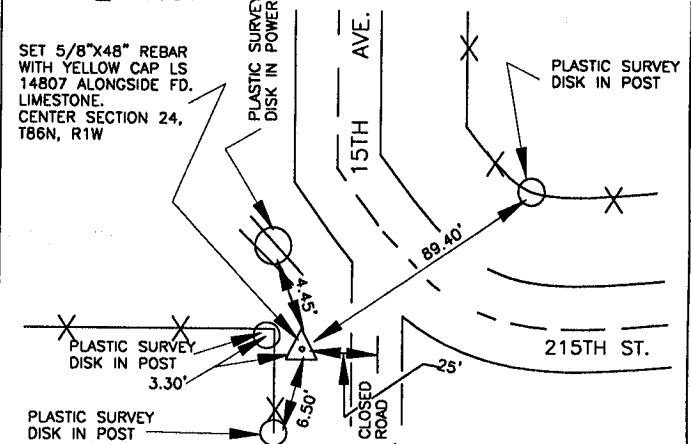
CORNER SECTION TOWNSHIP RANGE  
 N-1/4 24 86N 1W  
 OFFICE FILE NO.  
 86124c\_070901



PREVIOUSLY RECORDED IN BOOK N/A, PAGE N/A  
 MONUMENT DESCRIPTION AND HOW ESTABLISHED SET 5/8"X48"  
 REBAR WITH YELLOW CAP LS 14807-25' WEST OF FOUND 3/4" REBAR AT A PI IN  
 CENTER OF COUNTY ROAD (15TH AVE.)-AND ON NORTH LINE SECTION EXTENDED  
 WEST. ORIGINAL ROAD RECORD CALLED FOR ROAD TO BE 25' EAST OF CENTERLINE  
 SECTION. A FOUND STONE AT CENTER OF SECTION 24 BEARS THIS OUT. SET  
 REFERENCE POINTS AND TIED OUT AS INDICATED. NORTH QUARTER CORNER SECTION  
 24, T86N, R1W, 5TH PRINCIPAL MERIDIAN, JONES COUNTY, IOWA

## 968 CORNERS TO BE INDEXED

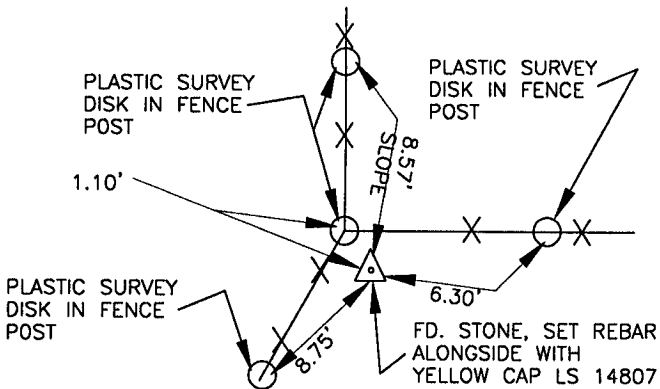
CORNER SECTION TOWNSHIP RANGE  
 CENTER 24 86N 1W  
 OFFICE FILE NO.  
 86124c\_070901



PREVIOUSLY RECORDED IN BOOK N/A, PAGE N/A  
 MONUMENT DESCRIPTION AND HOW ESTABLISHED FOUND 8"x12"x5"  
 LIMESTONE AT COR. FENCES WEST-SOUTH, SET 5/8"X48" REBAR WITH YELLOW CAP  
 LS 14807 ALONGSIDE. SET REFERENCE POINTS AND TIED OUT AS INDICATED.  
 STONE WAS FOUND TO BE 25' WEST OF THE CENTERLINE OF COUNTY ROAD (15TH  
 AVE.) AS INDICATED BY THE ORIGINAL ROAD RECORD. CENTER SECTION 24, T86N,  
 R1W, 5TH PRINCIPAL MERIDIAN, JONES COUNTY, IOWA.

## 969 CORNERS TO BE INDEXED

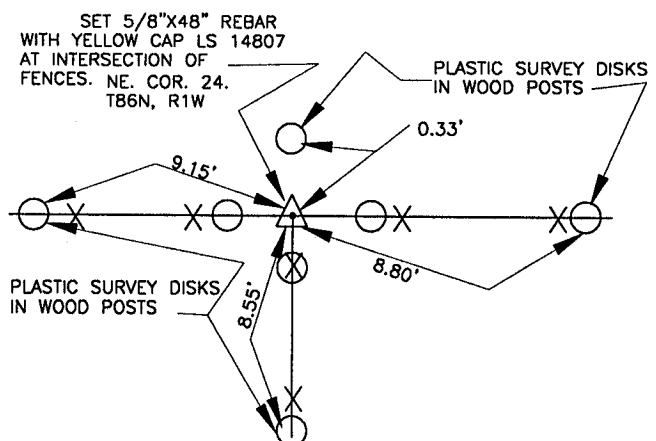
CORNER SECTION TOWNSHIP RANGE  
 NE. COR. 24 86N 1W  
 NW1/4  
 NE1/4  
 OFFICE FILE NO.  
 86124d\_070901



PREVIOUSLY RECORDED IN BOOK N/A, PAGE N/A  
 MONUMENT DESCRIPTION AND HOW ESTABLISHED FOUND 8"x12"x  
 4" LIMESTONE NEAR COR. POST, SET 5/8"X48" REBAR WITH YELLOW  
 CAP LS 14807 ALONGSIDE, SET REFERENCE POINTS AND TIED OUT AS  
 INDICATED. NE. COR., NW. QUARTER, NE. QUARTER, SECTION 24, T86N,  
 R1W, 5TH PRINCIPAL MERIDIAN, JONES COUNTY, IOWA.

## 970 CORNERS TO BE INDEXED

CORNER SECTION TOWNSHIP RANGE  
 NORTHEAST 24 86N 1W  
 OFFICE FILE NO.  
 86124e\_070901



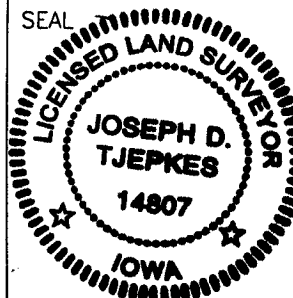
PREVIOUSLY RECORDED IN BOOK N/A, PAGE N/A  
 MONUMENT DESCRIPTION AND HOW ESTABLISHED SET 5/8"X48"  
 REBAR WITH YELLOW CAP LS 14807 AT INTERSECTION OF FENCES  
 NORTH-SOUTH-EAST -WEST (GOOD DEFINITION OF TOWNSHIP LINE)  
 NORTHEAST CORNER SECTION 24, T86N, R1W, 5TH PRINCIPAL  
 JONES COUNTY, IOWA

I hereby declare that this plat, survey or report  
 was made by me or under my direct personal  
 supervision and that I am a duly registered Land  
 Surveyor under the laws of the State of Iowa.

Signed:

*Joseph D. Tjepkes* J-22-01

Joseph D. Tjepkes L.S. Iowa Reg. No. 14807  
 My Registration Renewal Date is December 31, 2002



J.D. TJEPKES LS 14807  
 JONES COUNTY  
 ENGINEER'S OFFICE

19501 HWY. 64,  
 ANAMOSA, IOWA,  
 52205 (319)462-3785