

2001 2745

FILED
RECORDERS OFFICE
JONES COUNTY IOWA

01 AUG -6 AM 8:42

MARIE KRUTZFIELD
RECORDER NO FGG

J.D. TJEPKES, LS. JONES COUNTY ENGINEER'S OFFICE, 19501 HWY. 64, ANAMOSA, IOWA, 52205 (319)462-3785

UNITED STATES PUBLIC LAND SURVEY CORNER CERTIFICATE

LAND SURVEY MONUMENTS SITUATED IN SECTION 25, TOWNSHIP 86
NORTH, RANGE 1 WEST OF THE 5TH P.M., JONES COUNTY, IOWA

371 CORNERS TO BE INDEXED

CORNER SECTION TOWNSHIP RANGE
N-1/4 25 86N 1W

OFFICE FILE NO.

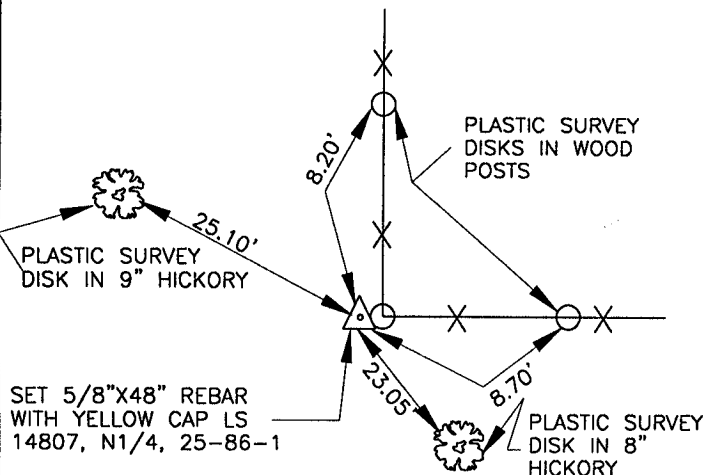
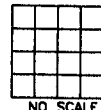
86125c_071001



CORNERS TO BE INDEXED

CORNER SECTION TOWNSHIP RANGE

OFFICE FILE NO.



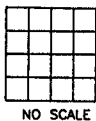
PREVIOUSLY RECORDED IN BOOK N/A, PAGE N/A
MONUMENT DESCRIPTION AND HOW ESTABLISHED SET 5/8\"X
48\" REBAR WITH YELLOW CAP LS 14807 AT FENCE CORNER.
GOOD DISTANCE AND ALIGNMENT TO NORTH. NORTH QUARTER
CORNER SECTION 25, TOWNSHIP 86 NORTH, RANGE 1 WEST,
5TH PRINCIPAL MERIDIAN, JONES COUNTY, IOWA.

PREVIOUSLY RECORDED IN BOOK _____, PAGE _____
MONUMENT DESCRIPTION AND HOW ESTABLISHED _____

CORNERS TO BE INDEXED

CORNER SECTION TOWNSHIP RANGE

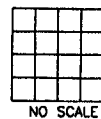
OFFICE FILE NO.



CORNERS TO BE INDEXED

CORNER SECTION TOWNSHIP RANGE

OFFICE FILE NO.



PREVIOUSLY RECORDED IN BOOK _____, PAGE _____
MONUMENT DESCRIPTION AND HOW ESTABLISHED _____

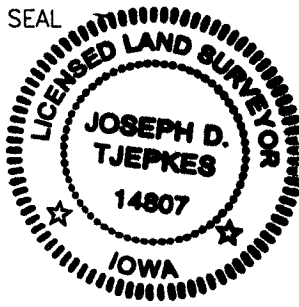
PREVIOUSLY RECORDED IN BOOK _____, PAGE _____
MONUMENT DESCRIPTION AND HOW ESTABLISHED _____

I hereby declare that this plat, survey or report was made by me or under my direct personal supervision and that I am a duly registered Land Surveyor under the laws of the State of Iowa.

Signed:

J. Tjepkes 7-10-01

Joseph D. Tjepkes L.S. Iowa Reg. No. 14807
My Registration Renewal Date is December 31, 2002



J.D. TJEPKES LS 14807
JONES COUNTY
ENGINEER'S OFFICE

19501 HWY. 64,
ANAMOSA, IOWA,
52205 (319)462-3785