

2005 3169

FILED
RECORDERS OFFICE
JONES COUNTY IOWA

05 SEP -7 AM 8:41

MARIE KRUTZFIELD
RECORDER 7.00 Pd

PREPARED BY: MICHAEL J. WEBER, WEBER SURVEYING, LLC, 26789 46TH AVE, BERNARD, IA 52032 (563) 879-4173

UNITED STATES PUBLIC LAND SURVEY CORNER CERTIFICATE OF

LAND SURVEY MONUMENTS SITUATED IN SECTION 27, TOWNSHIP 86 NORTH, RANGE 1 WEST
OF THE FIFTH PRINCIPAL MERIDIAN, JONES COUNTY, IOWA.
PREVIOUSLY RECORDED NONE UNLESS OTHERWISE NOTED

(book, page, document number, etc.)

(Show reason for preparing this certificate, the evidence and detailed procedures used in establishing the corner positions and monumentation found or placed.)

Monument Description and Remarks:

THE FOLLOWING CORNERS WERE USED AND IDENTIFIED ON THE PLAT OF SURVEY OF PARCEL 2005-159

NE COR., SW-NE - PLACED 5/8" DIA. STEEL REROD W/ORANGE PLASTIC CAP MARKED "WEBER PLS 15084", ESTABLISHED CORNER USING COUNTY HIGHWAY DEPT. RECORDS AND EASEMENT FOR PUBLIC HIGHWAY IN BOOK 241 PAGE 287 OF THE JONES CO RECORDS AND OCCUPATION FENCELINE EVIDENCE.

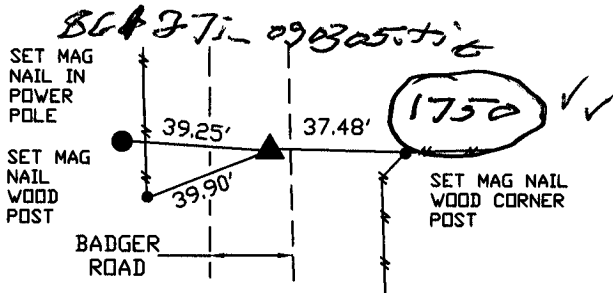
SE COR. SW-NE - PLACED 5/8" STEEL REROD W/ORANGE PLASTIC CAP MARKED "WEBER PLS 15084" USING COUNTY HIGHWAY DEPT. RECORDS AND EASEMENT FOR PUBLIC HIGHWAY IN BOOK 241 PAGE 287 OF THE JONES CO RECORDS

E1/4 FOUND 5/8" DIA. REROD USING COUNTY HIGHWAY DEPT. RECORDS SET 5/11/83

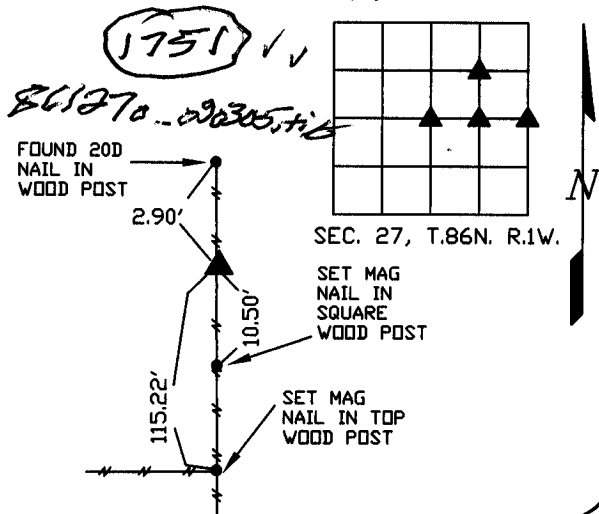
CENTER FOUND 5/8" DIA. REROD USING COUNTY HIGHWAY DEPT. RECORDS SET 5/11/83

PLAN - VIEW

(Show a minimum of three reference ties to durable physical objects, relevant monuments and physical conditions that will enable recovery of the corner.)



NE COR., SW-NE, SEC. 27,
PLACED 5/8" DIA. STEEL
REROD W/ORANGE PLASTIC
CAP MARKED "WEBER PLS
15084"



E1/4 SEC. 27, FOUND 5/8"
DIA. REROD

