

COPY

Jones County Marie Krutzfield Recorder
 Fee Book 2012 1145
 04/27/2012 @0206PM # Pages 1
 ZSC SEC COR CERT
 Total Fees: \$0.00

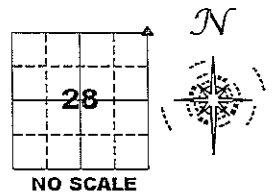
PREPARED BY
 CLARENCE J. WALTON, JONES COUNTY ENGINEER'S OFFICE, 19501 HWY. 64, ANAMOSA, IOWA, 52205 (319) 462-3785

UNITED STATES PUBLIC LAND SURVEY CORNER CERTIFICATE

LAND SURVEY MONUMENTS SITUATED IN SECTION 28, TOWNSHIP 86 NORTH,
 RANGE 1 WEST OF THE 5TH PRINCIPAL MERIDIAN, JONES COUNTY, IOWA.

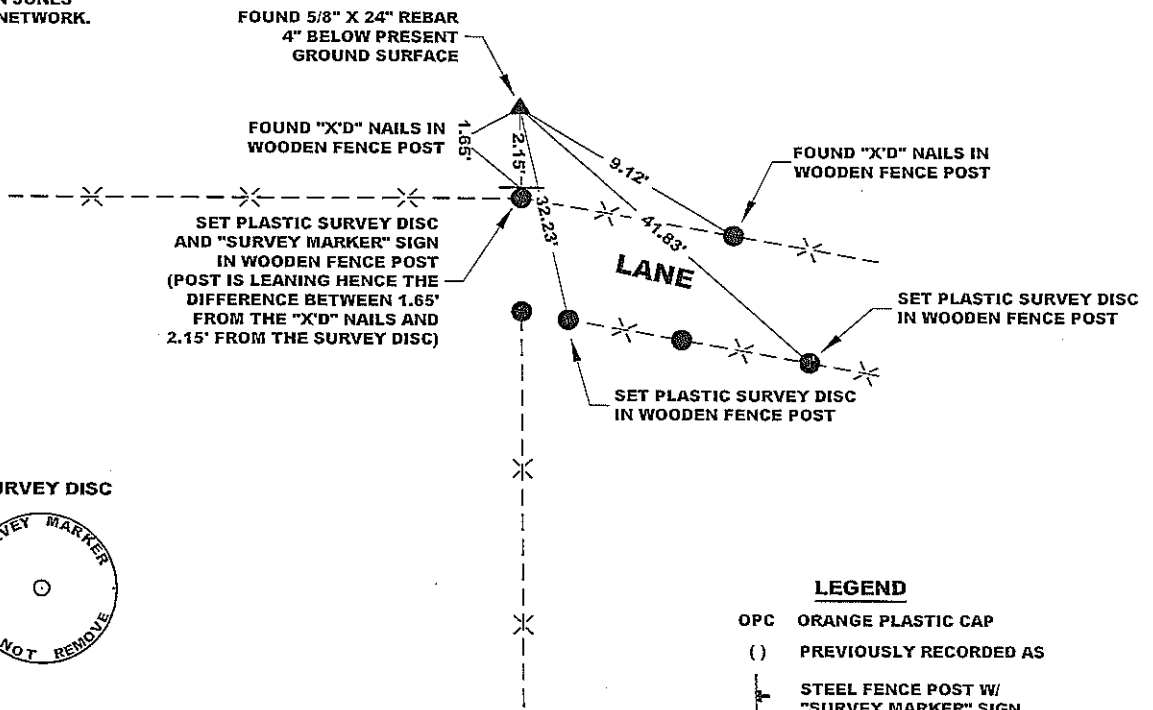
STATE PLANE COORDINATE
 NAD 83 IOWA NORTH
 N 3560076.38
 E 5610020.10

CORNER SECTION TOWNSHIP RANGE
 NE CORNER 28 T86N R1W

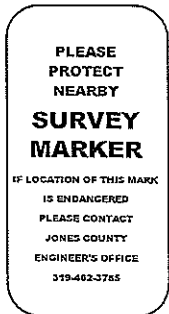


NOTES:

- 1) THE STATE PLANE COORDINATES AS SHOWN ARE FOR CONVENIENCE ONLY. THE TIES AS SHOWN SHOULD BE USED TO REPLACE THE CORNER, IF DESTROYED.
- 2) COORDINATES AS SHOWN ARE GRID COORDINATES AND BASED ON JONES COUNTY G.P.S. CONTROL NETWORK WHICH IN TURN IS BASED ON NAD 83 IOWA NORTH DATUM.
- 3) ALL MEASUREMENTS ARE IN FEET AND DECIMALS THEREOF.
- 4) * GRID DISTANCE, BASED ON JONES COUNTY G.P.S. CONTROL NETWORK.



"SURVEY MARKER" SIGN



SURVEY DISC

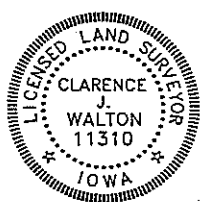


LEGEND

- OPC ORANGE PLASTIC CAP
- () PREVIOUSLY RECORDED AS
- STEEL FENCE POST W/ "SURVEY MARKER" SIGN

PAGE 1 of 1

PREVIOUSLY RECORDED IN N/A
 MONUMENT DESCRIPTION AND HOW ESTABLISHED FOUND 5/8" X 24" REBAR 4" BELOW PRESENT GROUND SURFACE PER TIES IN FIELD BOOK No. 287, PAGE 17 (DATED MAY 9TH, 1983) IN THE JONES COUNTY ENGINEER'S OFFICE. SAID NOTES STATE THAT THE 5/8" X 24" REBAR WAS SET WHEN NOTES WERE TAKEN. I ACCEPTED THIS CORNER AS IT REASONABLY FITS WITH OTHER FENCE CORNERS AND OTHER MONUMENTED CORNERS IN THE AREA.
 FIELD BOOK 341, PAGE 65 DATE OF SURVEY: 4/23/12



I hereby certify that this land surveying document and the related survey work was performed by me or under my direct personal supervision and that I am a duly registered Land Surveyor under the laws of the State of Iowa.
 Signed: *Clarence J. Walton* 4/27/12
 Clarence J. Walton, L.S.
 My Registration Renewal Date is December 31, 2013
 Iowa License Number 11310
 Pages or sheets covered by this seal: 1 of 1.

- A. THERE IS NO CERTIFICATE FOR THE CORNER ON FILE WITH THE RECORDER OF THE COUNTY IN WHICH THE CORNER IS LOCATED.
- B. THE CORNER MONUMENT HAS BEEN REPLACED OR MODIFIED.
- C. THE SURVEYOR IN RESPONSIBLE CHARGE OF THE LAND SURVEYING ACCEPTS A CORNER POSITION THAT DIFFERS FROM THAT SHOWN IN THE PUBLIC RECORDS OF THE COUNTY IN WHICH THE CORNER IS LOCATED.
- D. THE REFERENCE TIES REFERRED TO IN AN EXISTING PUBLIC RECORD NO LONGER EXIST.
- E. THIS CERTIFICATE FILED TO CORRECT PREVIOUS CERTIFICATE.

CORNERS TO BE INDEXED

CORNER	SECTION	TOWNSHIP	RANGE
NE CORNER	28	86N	1W
SE CORNER	21	86N	1W
SW CORNER	22	86N	1W
NW CORNER	27	86N	1W

JONES COUNTY ENGINEER'S OFFICE



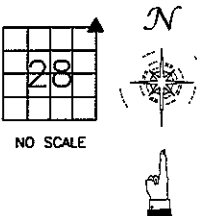
19501 HWY. 64, ANAMOSA, IOWA 52205
 (319) 462-3785

ARCHIVAL PUBLIC LAND SURVEY SYSTEM CORNER TIES

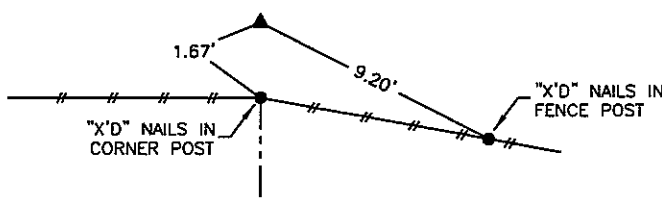
THIS IS NOT A CERTIFICATION

LAND SURVEY MONUMENTS SITUATED IN SECTION 28, TOWNSHIP 86
NORTH, RANGE 1 WEST OF THE 5TH P.M., JONES COUNTY, IOWA

CORNERS TO BE INDEXED
CORNER SECTION TOWNSHIP RANGE
NE 28 86N 1W



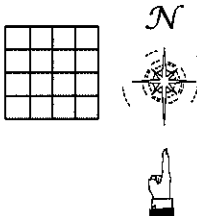
REF: FIELD BOOK 287, PAGE 17.
5/9/83
POSTEL-WOOD-POWELL-RUSSETT



PREVIOUSLY RECORDED IN BOOK N/A, PAGE N/A
MONUMENT DESCRIPTION AND HOW ESTABLISHED _____

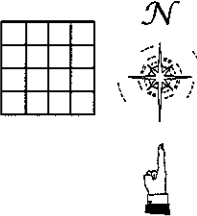
DUG IN SEC. CORNER LOCATION. FOUND NO STONE OR MON. FARMER SAID OLD COR. PO. WAS AT THIS LOCATION. TREES IN FC. LINE WERE BULLDOZED OUT & STONE MAY HAVE BEEN TAKEN OUT. MEASURED IN FROM 1/4 COR. WEST 1324'-1324' TO CORNER PO. MEASURED IN FROM 1/4 COR. EAST 1347'-1350'. SET 5/8"X24" IRON PIN AT CORNER POST LOCATION. PIN IS ON LINE WITH SEC. FENCE EAST & WEST.
FOR MORE INFORMATION SEE FRONT PAGE THRU PAGE 2, BOOK 287, #1.

CORNERS TO BE INDEXED
CORNER SECTION TOWNSHIP RANGE



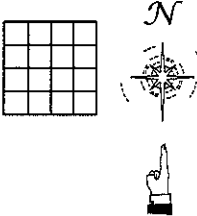
PREVIOUSLY RECORDED IN BOOK _____, PAGE _____
MONUMENT DESCRIPTION AND HOW ESTABLISHED _____

CORNERS TO BE INDEXED
CORNER SECTION TOWNSHIP RANGE



PREVIOUSLY RECORDED IN BOOK _____, PAGE _____
MONUMENT DESCRIPTION AND HOW ESTABLISHED _____

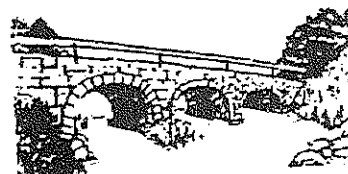
CORNERS TO BE INDEXED
CORNER SECTION TOWNSHIP RANGE



PREVIOUSLY RECORDED IN BOOK _____, PAGE _____
MONUMENT DESCRIPTION AND HOW ESTABLISHED _____

ARCHIVAL PUBLIC LAND SURVEY SYSTEM CORNER TIES

JONES COUNTY ENGINEER'S OFFICE



19501 HWY. 64, ANAMOSA, IOWA 52205
(319) 462-3785