

COPY

Jones County Marie Krutzfield Recorder  
 Fee Book 2012 1148  
 04/27/2012 @0214PM # Pages 1  
 ZSC SEC COR CERT  
 Total Fees: \$0.00

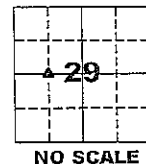
PREPARED BY  
 CLARENCE J. WALTON, JONES COUNTY ENGINEER'S OFFICE, 19501 HWY. 64, ANAMOSA, IOWA, 52205 (319) 462-3785

# UNITED STATES PUBLIC LAND SURVEY CORNER CERTIFICATE

LAND SURVEY MONUMENTS SITUATED IN SECTION 29, TOWNSHIP 86 NORTH,  
 RANGE 1 WEST OF THE 5TH PRINCIPAL MERIDIAN, JONES COUNTY, IOWA.

STATE PLANE COORDINATE  
 NAD 83 IOWA NORTH  
 N 3557083.48  
 E 5600719.36

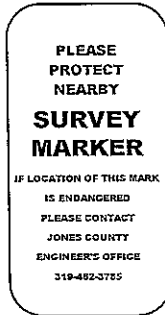
CORNER SECTION TOWNSHIP RANGE  
 NE CORNER 29 T86N R1W  
 NW 1/4 SW 1/4



NOTES:

- 1) THE STATE PLANE COORDINATES AS SHOWN ARE FOR CONVENIENCE ONLY. THE TIES AS SHOWN SHOULD BE USED TO REPLACE THE CORNER, IF DESTROYED.
- 2) COORDINATES AS SHOWN ARE GRID COORDINATES AND BASED ON JONES COUNTY G.P.S. CONTROL NETWORK WHICH IN TURN IS BASED ON NAD 83 IOWA NORTH DATUM.
- 3) ALL MEASUREMENTS ARE IN FEET AND DECIMALS THEREOF.
- 4) \* GRID DISTANCE, BASED ON JONES COUNTY G.P.S. CONTROL NETWORK.

"SURVEY MARKER" SIGN

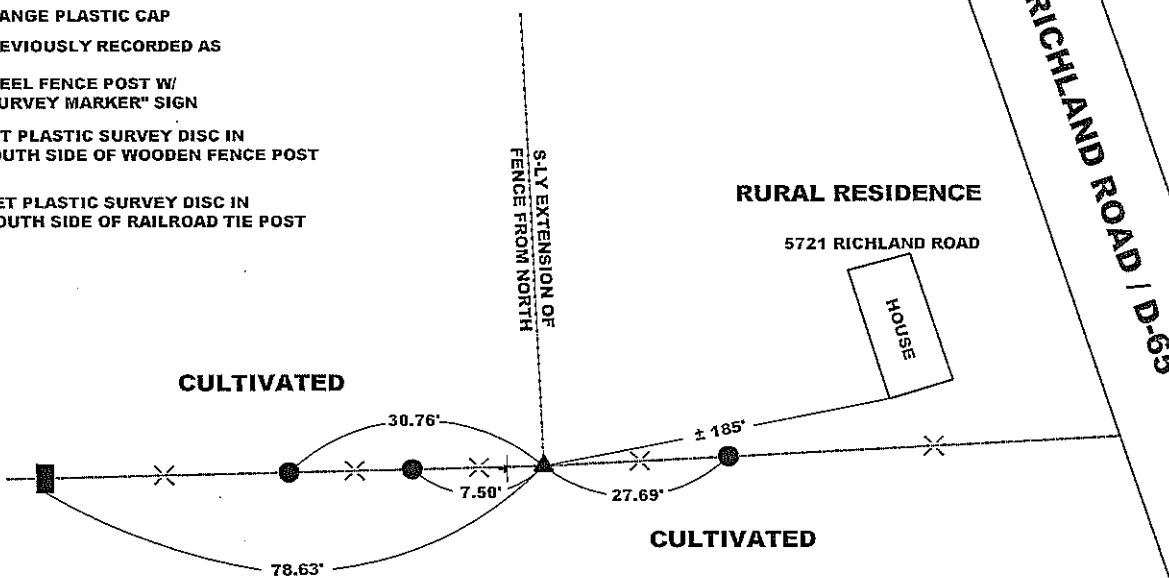


SURVEY DISC



LEGEND

- OPC ORANGE PLASTIC CAP
- ( ) PREVIOUSLY RECORDED AS
- STEEL FENCE POST W/ "SURVEY MARKER" SIGN
- SET PLASTIC SURVEY DISC IN SOUTH SIDE OF WOODEN FENCE POST
- SET PLASTIC SURVEY DISC IN SOUTH SIDE OF RAILROAD TIE POST



PAGE 1 of 1

PREVIOUSLY RECORDED IN N/A

MONUMENT DESCRIPTION AND HOW ESTABLISHED SET 5/8" X 24" REBAR WITH ORANGE PLASTIC CAP #11310 FLUSH WITH PRESENT EXISTING GROUND SURFACE AT INTERSECTION OF FENCE LINE NORTH EXTENDED TO INTERSECT WITH OLD EXISTING FENCE TO EAST AND WEST. NO OTHER EVIDENCE EXISTS. SET STEEL FENCE POST WITH "SURVEY MARKER" SIGN 0.60' WEST OF SET REBAR AS A WITNESS TO CORNER. AS A POINT OF INTEREST, PAT POWELL AND I HAVE FOUND THAT CHARLES F. LEGATE WHO WAS THE SURVEYOR ASSIGNED TO SUBDIVIDE THE E 1/2 OF JONES COUNTY SAVE THE SOUTH TIER OF TOWNSHIPS, HAD CREWS WHO USED SLOPPY METHODS, IMPROPER SHORTCUTS, FRAUDULENT NOTES, AND NOT SETTING CORNERS. IN SOME INSTANCES, COUNTY SURVEYORS TOOK UP SOME OF THE SLACK, OTHERWISE IT WAS LEFT TO THE LAND OWNERS TO SETTLE UP MATTERS AS TO LAND LINES.

FIELD BOOK 341, PAGE 62 DATE OF SURVEY: 4/24/12



I hereby certify that this land surveying document and the related survey work was performed by me or under my direct personal supervision and that I am a duly registered Land Surveyor under the laws of the State of Iowa.  
 Signed: *Clarence J. Walton* 4/27/12

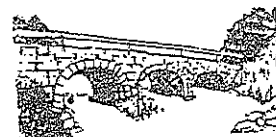
Clarence J. Walton, L.S.  
 My Registration Renewal Date is December 31, 2013  
 Iowa License Number 11310  
 Pages or sheets covered by this seal: 1 of 1.

- A. THERE IS NO CERTIFICATE FOR THE CORNER ON FILE WITH THE RECORDER OF THE COUNTY IN WHICH THE CORNER IS LOCATED.
- B. THE CORNER MONUMENT HAS BEEN REPLACED OR MODIFIED.
- C. THE SURVEYOR IN RESPONSIBLE CHARGE OF THE LAND SURVEYING ACCEPTS A CORNER POSITION THAT DIFFERS FROM THAT SHOWN IN THE PUBLIC RECORDS OF THE COUNTY IN WHICH THE CORNER IS LOCATED.
- D. THE REFERENCE TIES REFERRED TO IN AN EXISTING PUBLIC RECORD NO LONGER EXIST.
- E. THIS CERTIFICATE FILED TO CORRECT PREVIOUS CERTIFICATE.

CORNERS TO BE INDEXED

CORNER	SECTION	TOWNSHIP	RANGE
NE CORNER	29	86N	1W
NW 1/4 SW 1/4	29	86N	1W
SE CORNER	29	86N	1W
NW 1/4 NW 1/4	29	86N	1W
SW CORNER	29	86N	1W
NE 1/4 NW 1/4	29	86N	1W
NW CORNER	29	86N	1W
NE 1/4 SW 1/4	29	86N	1W

JONES COUNTY ENGINEER'S OFFICE



19501 HWY. 64, ANAMOSA, IOWA 52205  
 (319) 462-3785