

COPY

Jones County Marie Krutzfield Recorder
 Fee Book 2012 1146
 04/27/2012 @0208PM # Pages 1
 ZSC SEC COR CERT
 Total Fees: \$0.00

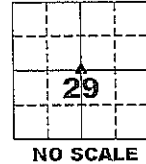
PREPARED BY
 CLARENCE J. WALTON, JONES COUNTY ENGINEER'S OFFICE, 19501 HWY. 64, ANAMOSA, IOWA, 52205 (319) 462-3785

UNITED STATES PUBLIC LAND SURVEY CORNER CERTIFICATE

LAND SURVEY MONUMENTS SITUATED IN SECTION 29, TOWNSHIP 86 NORTH,
 RANGE 1 WEST OF THE 5TH PRINCIPAL MERIDIAN, JONES COUNTY, IOWA.

STATE PLANE COORDINATE
 NAD 83 IOWA NORTH
 N 3557150.52
 E 5602062.37

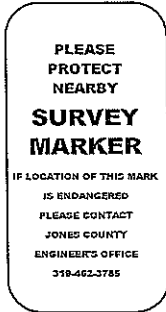
CORNER SECTION TOWNSHIP RANGE
 CENTER 29 T86N R1W



NOTES:

- 1) THE STATE PLANE COORDINATES AS SHOWN ARE FOR CONVENIENCE ONLY. THE TIES AS SHOWN SHOULD BE USED TO REPLACE THE CORNER, IF DESTROYED.
- 2) COORDINATES AS SHOWN ARE GRID COORDINATES AND BASED ON JONES COUNTY G.P.S. CONTROL NETWORK WHICH IN TURN IS BASED ON NAD 83 IOWA NORTH DATUM.
- 3) ALL MEASUREMENTS ARE IN FEET AND DECIMALS THEREOF.
- 4) * GRID DISTANCE, BASED ON JONES COUNTY G.P.S. CONTROL NETWORK.

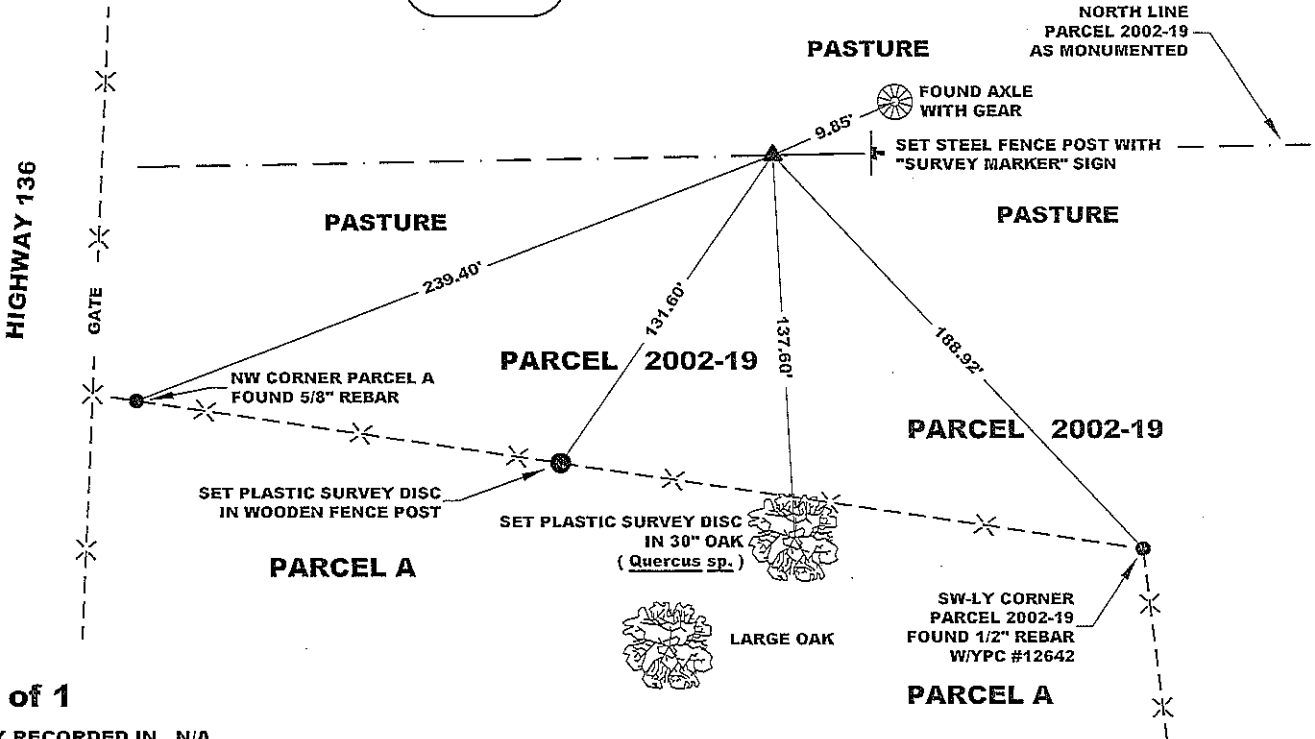
"SURVEY MARKER" SIGN



SURVEY DISC



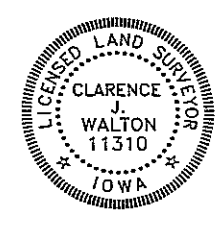
- LEGEND
- OPC ORANGE PLASTIC CAP
 - () PREVIOUSLY RECORDED AS
 - STEEL FENCE POST W/ "SURVEY MARKER" SIGN



PAGE 1 of 1

PREVIOUSLY RECORDED IN N/A
 MONUMENT DESCRIPTION AND HOW ESTABLISHED FOUND 1/2" REBAR WITH YELLOW PLASTIC CAP #12642 FLUSH WITH PRESENT EXISTING GROUND. SET STEEL FENCE POST W/ "SURVEY MARKER" SIGN AS WITNESS. THIS REBAR IS DEAD ON LINE BETWEEN THE N 1/4 AND S 1/4 CORNERS OF SAID SECTION 29. FOUND AXLE/GEAR HAS NO "PEDIGREE" THAT WE COULD FIND. ALSO, THIS REBAR FITS WITH THE RECORDED PLATS OF SURVEYS DONE IN THIS AREA. NO OTHER EVIDENCE WAS FOUND BY PROBING WITH TILE PROBE AND SPADE OR BY USING METAL DETECTOR.

FIELD BOOK 341, PAGE 61 DATE OF SURVEY: 4/24/12



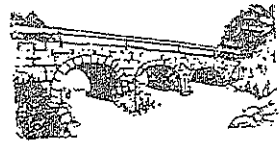
I hereby certify that this land surveying document and the related survey work was performed by me or under my direct personal supervision and that I am a duly registered Land Surveyor under the laws of the State of Iowa.
 Signed: *Clarence J. Walton* 4/27/12
 Clarence J. Walton, L.S.
 My Registration Renewal Date is December 31, 2013
 Iowa License Number 11310
 Pages or sheets covered by this seal: 1 of 1.

- A. THERE IS NO CERTIFICATE FOR THE CORNER ON FILE WITH THE RECORDER OF THE COUNTY IN WHICH THE CORNER IS LOCATED.
- B. THE CORNER MONUMENT HAS BEEN REPLACED OR MODIFIED.
- C. THE SURVEYOR IN RESPONSIBLE CHARGE OF THE LAND SURVEYING ACCEPTS A CORNER POSITION THAT DIFFERS FROM THAT SHOWN IN IN THE PUBLIC RECORDS OF THE COUNTY IN WHICH THE CORNER IS LOCATED.
- D. THE REFERENCE TIES REFERRED TO IN AN EXISTING PUBLIC RECORD NO LONGER EXIST.
- E. THIS CERTIFICATE FILED TO CORRECT PREVIOUS CERTIFICATE.

CORNERS TO BE INDEXED

| CORNER | SECTION | TOWNSHIP | RANGE |
|--------|---------|----------|-------|
| CENTER | 29 | 86N | 1W |

JONES COUNTY ENGINEER'S OFFICE



19501 HWY. 64, ANAMOSA, IOWA 52205
 (319) 462-3785