

Jones County Marie Krutzfield Recorder
 Fee Book 2012 1147
 04/27/2012 @0211PM # Pages 1
 ZSC SEC COR CERT
 Total Fees: \$0.00

COPY

PREPARED BY
 CLARENCE J. WALTON, JONES COUNTY ENGINEER'S OFFICE, 19501 HWY. 64, ANAMOSA, IOWA, 52205 (319) 462-3785

UNITED STATES PUBLIC LAND SURVEY CORNER CERTIFICATE

LAND SURVEY MONUMENTS SITUATED IN SECTION 29, TOWNSHIP 86 NORTH,
 RANGE 1 WEST OF THE 5TH PRINCIPAL MERIDIAN, JONES COUNTY, IOWA.

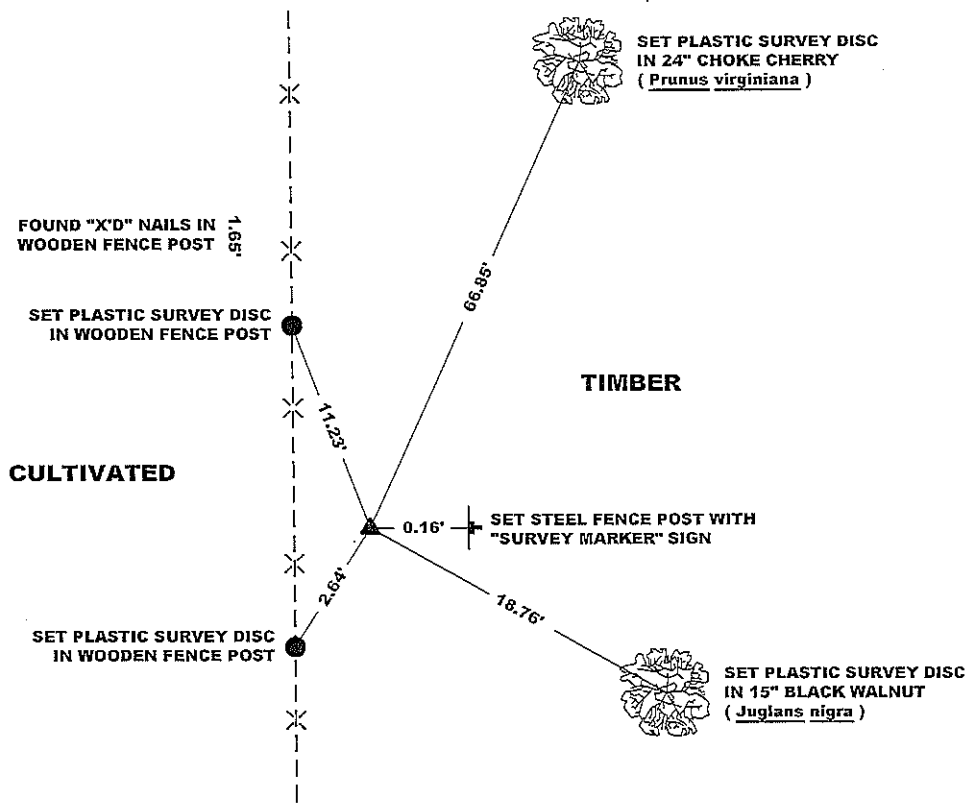
STATE PLANE COORDINATE
 NAD 83 IOWA NORTH
 N 3558447.33
 E 5600665.48

CORNER SECTION TOWNSHIP RANGE
 NE CORNER 29 T86N R1W
 SW 1/4 NW 1/4

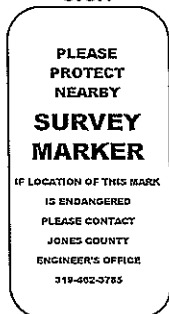


NOTES:

- 1) THE STATE PLANE COORDINATES AS SHOWN ARE FOR CONVENIENCE ONLY. THE TIES AS SHOWN SHOULD BE USED TO REPLACE THE CORNER, IF DESTROYED.
- 2) COORDINATES AS SHOWN ARE GRID COORDINATES AND BASED ON JONES COUNTY G.P.S. CONTROL NETWORK WHICH IN TURN IS BASED ON NAD 83 IOWA NORTH DATUM.
- 3) ALL MEASUREMENTS ARE IN FEET AND DECIMALS THEREOF.
- 4) * GRID DISTANCE, BASED ON JONES COUNTY G.P.S. CONTROL NETWORK.



"SURVEY MARKER" SIGN



SURVEY DISC



LEGEND

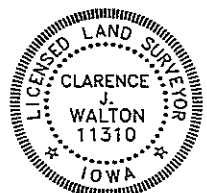
- OPC ORANGE PLASTIC CAP
- () PREVIOUSLY RECORDED AS
- STEEL FENCE POST W/ "SURVEY MARKER" SIGN

PAGE 1 of 1

PREVIOUSLY RECORDED IN N/A

MONUMENT DESCRIPTION AND HOW ESTABLISHED SET 5/8" X 24" REBAR WITH ORANGE PLASTIC CAP #11310 FLUSH WITH PRESENT EXISTING GROUND ON LINE AND EQUIDISTANT BETWEEN THE NE CORNER OF THE NW 1/4 NW 1/4 OF SECTION 29-T86N-R1W AND THE NE CORNER OF THE NW 1/4 SW 1/4 OF SAID SAID SECTION 29. WE FOUND NO RECORD WHICH SHOWS THIS CORNER HAVING BEEN SET, AND NO OTHER EVIDENCE OTHER THAN AN EXISTING NORTH-SOUTH FENCE LINE (AS SHOWN IN DRAWING ABOVE) BY PROBING WITH TILE PROBE AND SPADE OR USING METAL DETECTOR.

FIELD BOOK 341, PAGE 63 DATE OF SURVEY: 4/23/12



I hereby certify that this land surveying document and the related survey work was performed by me or under my direct personal supervision and that I am a duly registered Land Surveyor under the laws of the State of Iowa.

Signed: *Clarence J. Walton* 4/27/12
 Clarence J. Walton, L.S.
 My Registration Renewal Date is December 31, 2013
 Iowa License Number 11310

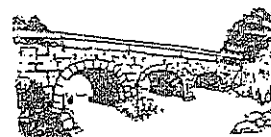
Pages or sheets covered by this seal: 1 of 1.

- A. THERE IS NO CERTIFICATE FOR THE CORNER ON FILE WITH THE RECORDER OF THE COUNTY IN WHICH THE CORNER IS LOCATED.
- B. THE CORNER MONUMENT HAS BEEN REPLACED OR MODIFIED.
- C. THE SURVEYOR IN RESPONSIBLE CHARGE OF THE LAND SURVEYING ACCEPTS A CORNER POSITION THAT DIFFERS FROM THAT SHOWN IN THE PUBLIC RECORDS OF THE COUNTY IN WHICH THE CORNER IS LOCATED.
- D. THE REFERENCE TIES REFERRED TO IN AN EXISTING PUBLIC RECORD NO LONGER EXIST.
- E. THIS CERTIFICATE FILED TO CORRECT PREVIOUS CERTIFICATE.

CORNERS TO BE INDEXED

CORNER	SECTION	TOWNSHIP	RANGE
NE CORNER	29	86N	1W
SW 1/4 NW 1/4	29	86N	1W
SE CORNER	29	86N	1W
NW 1/4 NW 1/4	29	86N	1W
SW CORNER	29	86N	1W
NE 1/4 NW 1/4	29	86N	1W
NW CORNER	29	86N	1W
SE 1/4 NW 1/4	29	86N	1W

JONES COUNTY ENGINEER'S OFFICE



19501 HWY. 64, ANAMOSA, IOWA 52205
 (319) 462-3785