

2004 4705

FILED
RECORDERS OFFICE
JONES COUNTY IOWA

B

04 DEC 20 PM 12:37

MARIE KRUTZFIELD
RECORDER 7.00 Pd

Prepared by: SCHNEIDER Land Surveying and Planning, Inc. P.O. Box 128 Farley, Iowa 52046 563-744-3631

UNITED STATES PUBLIC LAND SURVEY CORNER CERTIFICATE OF

Land Survey Monuments situated in Section 2, Township 86 North, Range 1 West of the Fifth Principal Meridian, Jones County, Iowa.

Previously recorded (NONE OF RECORD)

(BOOK, PAGE / INSTR. NO. / CABINET, SLIDE)

(Show reason for preparing this certificate, the evidence and detailed procedures used in establishing the corner positions and monumentation found or placed.)

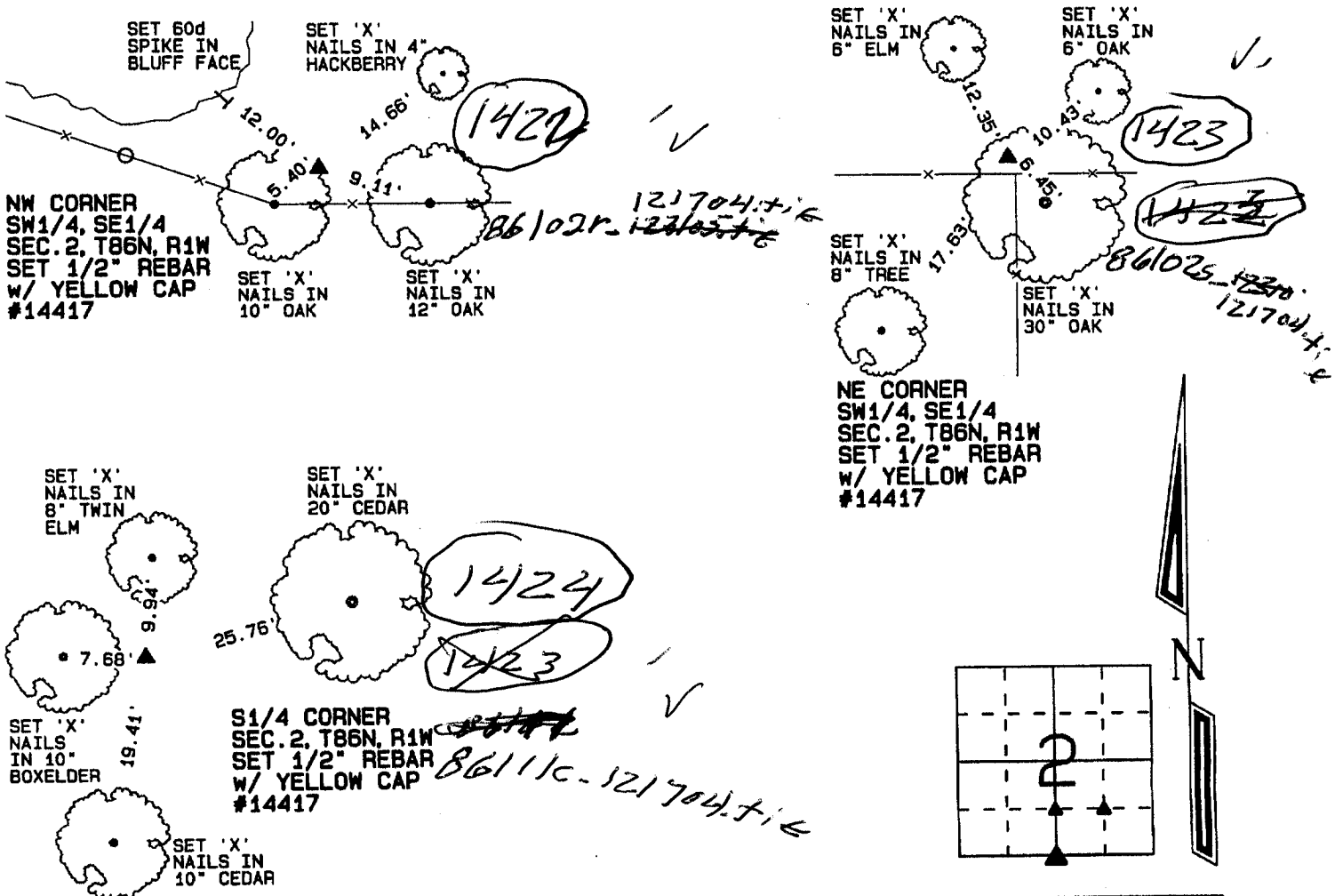
Monument Description and Remarks: THE NW CORNER OF THE SW1/4 OF THE SE1/4 OF SEC.2, T86N, R1W WAS ESTABLISHED AS FENCED AND OCCUPIED.

THE NE CORNER OF THE SW1/4 OF THE SE1/4 OF SEC.2, T86N, R1W WAS ESTABLISHED USING OCCUPATION FENCES LOCATED EAST, WEST AND SOUTH OF THE CORNER.

THE S1/4 CORNER OF SEC.2, T86N, R1W WAS ESTABLISHED IN LINE WITH OCCUPATION EVIDENCE LOCATED SOUTH AND WEST OF THE CORNER.

PLAN - VIEW

(Show a minimum of three reference ties to durable physical objects, relevant monuments and physical conditions that will enable recovery of the corner.)

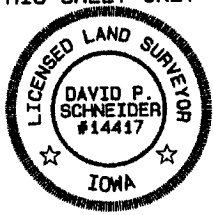


I hereby certify that this land surveying document was prepared and the related survey work was performed by me or under my direct personal supervision and that I am a duly licensed Land Surveyor under the laws of the State of Iowa.

David P. Schneider
David P. Schneider P.L.S. #14417 Date: 12/17/2004
My license renewal date is December 31, 2005.

Pages or sheets covered by this seal: THIS SHEET ONLY

SCHNEIDER
Land Surveying & Planning, Inc.
P.O. Box 128 Farley, Iowa 52046
Ph. #563-744-3631 Fax#563-744-3629



List Corners to be Indexed

Corners	Section	Twp	Range
NW CORNER SW1/4, SE1/4	2	86N	1W
NE CORNER SW1/4, SE1/4	2	86N	1W
S1/4 CORNER	2	86N	1W