

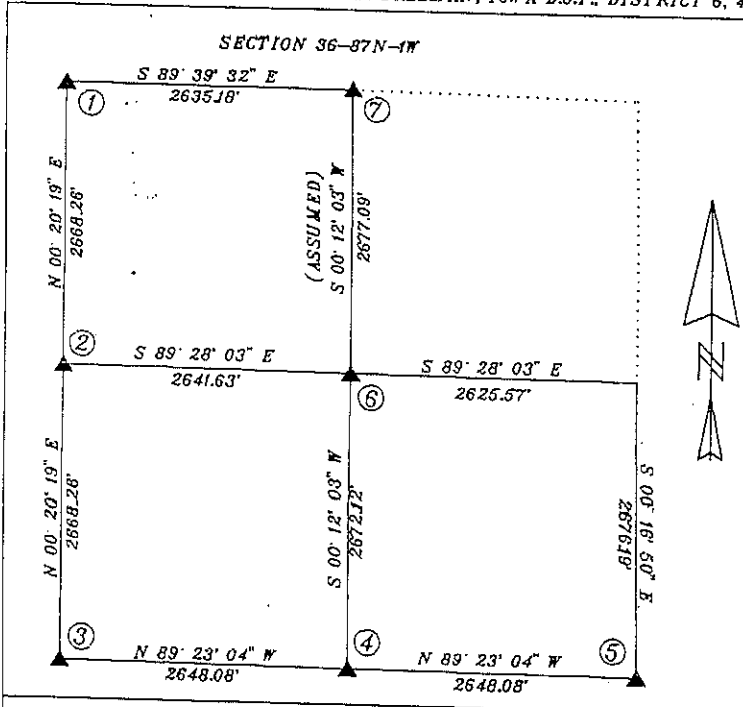
Kathy Flynn Thurlow

11521-00

2000 OCT -4 AM 8:53

KATHY FLYNN THURLOW  
COUNTY RECORDER  
DUBUQUE CO., IOWA FEES 6.00

PREPARED BY: PETER H. DALLMAN, IOWA D.O.T., DISTRICT 6, 430 16TH AVE. SW, CEDAR RAPIDS, IOWA 52404 PH. (319) 364-0235



UNITED STATES PUBLIC LAND SURVEY  
CORNER CERTIFICATE  
SECTION 36 TOWNSHIP 87N RANGE 1W  
DUBUQUE COUNTY, IOWA  
PROJECT NO. STPN-32-1(3)-2J-31  
MADE FOR  
THE IOWA DEPARTMENT OF TRANSPORTATION FOR  
THE PURPOSE OF EASEMENT DESCRIPTIONS  
FOR WETLANDS MITIGATION

SURVEY WAS MADE IN AUGUST AND SEPT., 2000  
ALL DISTANCES ARE MEASURED HORIZONTALLY AND  
ARE SHOWN IN FEET AND DECIMALS THEREOF.  
DRAWINGS ARE NOT TO SCALE



I hereby certify that this land surveying document and the related survey work was prepared by me or under my direct personal supervision and that I am a duly licensed Land Surveyor under the laws of the State of Iowa.

*Peter H. Dallman* 10-2-2000  
Peter H. Dallman Date  
License No. 13802  
My License renewal date is December 31, 2000  
Pages or sheets covered by this seal:

