

COPY

Jones County Marie Krutzfield Recorder
 Fee Book 2012 1152
 04/27/2012 @0225PM # Pages 1
 ZSC SEC COR CERT
 Total Fees: \$0.00

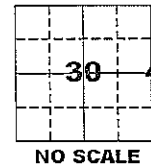
PREPARED BY
 CLARENCE J. WALTON, JONES COUNTY ENGINEER'S OFFICE, 19501 HWY. 64, ANAMOSA, IOWA, 52205 (319) 462-3785

UNITED STATES PUBLIC LAND SURVEY CORNER CERTIFICATE

LAND SURVEY MONUMENTS SITUATED IN SECTION 30, TOWNSHIP 86 NORTH,
 RANGE 1 WEST OF THE 5TH PRINCIPAL MERIDIAN, JONES COUNTY, IOWA.

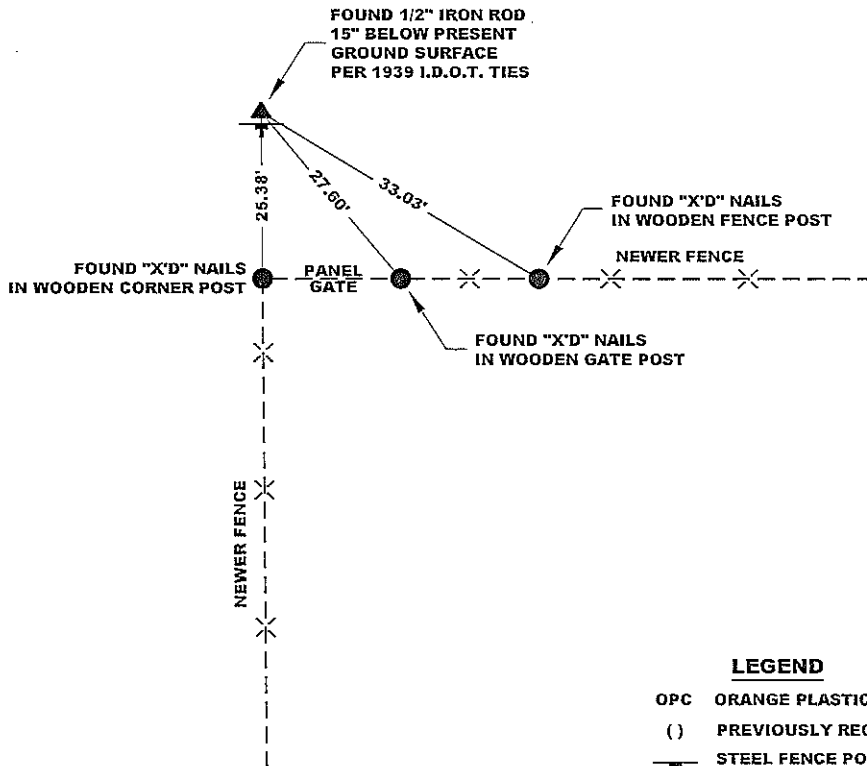
STATE PLANE COORDINATE
 NAD 83 IOWA NORTH
 N 3557052.46
 E 5599380.47

CORNER SECTION TOWNSHIP RANGE
 E 1/4 CORNER 30 T86N R1W

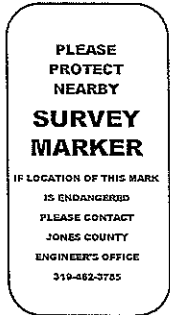


NOTES:

- 1) THE STATE PLANE COORDINATES AS SHOWN ARE FOR CONVENIENCE ONLY. THE TIES AS SHOWN SHOULD BE USED TO REPLACE THE CORNER, IF DESTROYED.
- 2) COORDINATES AS SHOWN ARE GRID COORDINATES AND BASED ON JONES COUNTY G.P.S. CONTROL NETWORK WHICH IN TURN IS BASED ON NAD 83 IOWA NORTH DATUM.
- 3) ALL MEASUREMENTS ARE IN FEET AND DECIMALS THEREOF.
- 4) * GRID DISTANCE, BASED ON JONES COUNTY G.P.S. CONTROL NETWORK.



"SURVEY MARKER" SIGN



SURVEY DISC



LEGEND

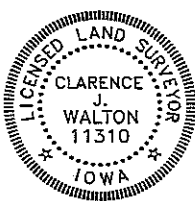
- OPC ORANGE PLASTIC CAP
- () PREVIOUSLY RECORDED AS
- T STEEL FENCE POST W/ "SURVEY MARKER" SIGN

PAGE 1 of 1

PREVIOUSLY RECORDED IN N/A

MONUMENT DESCRIPTION AND HOW ESTABLISHED FOUND 1/2" IRON ROD PER 1939 I.D.O.T. TIES FOR PROJECT F.A.-814 ON 10/13/98 BY POWELL AND CORNER WAS RETIED THEN. ON 4/23/12 CORNER WAS FOUND AGAIN FROM 1998 TIES WHICH WERE STILL UNDISTURBED. TOP OF ROD IS 15" BELOW PRESENT GROUND SURFACE. SET STEEL FENCE POST WITH "SURVEY MARKER" SIGN NEXT TO SOUTH SIDE OF ROD AS A WITNESS TO CORNER.

FIELD BOOK 341, PAGE 43 DATE OF SURVEY: 4/23/12



I hereby certify that this land surveying document and the related survey work was performed by me or under my direct personal supervision and that I am a duly registered Land Surveyor under the laws of the State of Iowa.
 Signed: *Clarence J. Walton* 4/27/12

Clarence J. Walton, L.S.
 My Registration Renewal Date is December 31, 2013
 Iowa License Number 11310
 Pages or sheets covered by this seal: 1 of 1.

- A. THERE IS NO CERTIFICATE FOR THE CORNER ON FILE WITH THE RECORDER OF THE COUNTY IN WHICH THE CORNER IS LOCATED.
- B. THE CORNER MONUMENT HAS BEEN REPLACED OR MODIFIED.
- C. THE SURVEYOR IN RESPONSIBLE CHARGE OF THE LAND SURVEYING ACCEPTS A CORNER POSITION THAT DIFFERS FROM THAT SHOWN IN THE PUBLIC RECORDS OF THE COUNTY IN WHICH THE CORNER IS LOCATED.
- D. THE REFERENCE TIES REFERRED TO IN AN EXISTING PUBLIC RECORD NO LONGER EXIST.
- E. THIS CERTIFICATE FILED TO CORRECT PREVIOUS CERTIFICATE.

CORNERS TO BE INDEXED

CORNER	SECTION	TOWNSHIP	RANGE
E 1/4 CORNER	30	86N	1W
W 1/4 CORNER	29	86N	1W

JONES COUNTY ENGINEER'S OFFICE



19501 HWY. 64, ANAMOSA, IOWA 52205
 (319) 462-3785

THIS IS NOT A CERTIFICATION

J

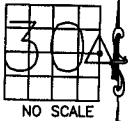
JONES COUNTY ENGINEER'S OFFICE, 19501 HWY. 64, ANAMOSA, IOWA, 52205 (319)462-3785

UNITED STATES PUBLIC LAND SURVEY CORNER CERTIFICATE

LAND SURVEY MONUMENTS SITUATED IN SECTION 30, TOWNSHIP 86 NORTH, RANGE 1 WEST OF THE 5TH P.M., JONES COUNTY, IOWA

CORNERS TO BE INDEXED

CORNER SECTION TOWNSHIP RANGE
E-QUARTER 30 86N 1W



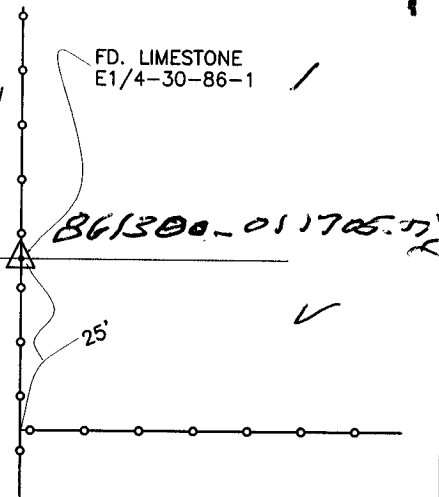
OFFICE FILE NO.

86130e_010705.tif

REF:
JONES COUNTY SURVEY CREW
1939--F.A.-814

FD. LIMESTONE
E1/4-30-86-1

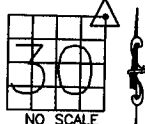
1434



PREVIOUSLY RECORDED IN BOOK _____, PAGE _____
MONUMENT DESCRIPTION AND HOW ESTABLISHED. FOUND
5"x9"x15" LIMESTONE WITH POINT UPL. SET 1/2"x36" IRON PIN UNDER
STONE. EAST QUARTER CORNER OF SECTION 30, TOWNSHIP 86 NORTH,
RANGE 1 WEST OF THE 5TH PRINCIPAL MERIDIAN, JONES
COUNTY, IOWA.

CORNERS TO BE INDEXED

CORNER SECTION TOWNSHIP RANGE
NORTHEAST 30 86N 1W



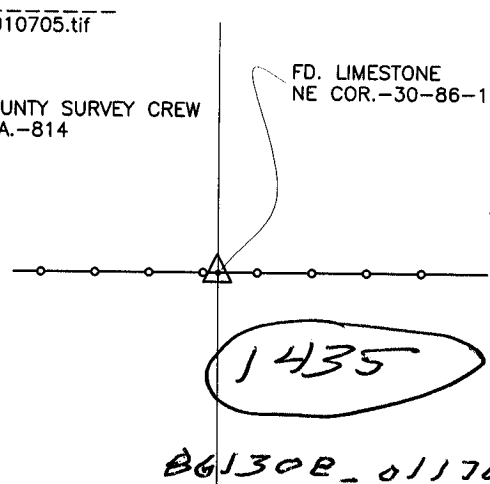
OFFICE FILE NO.

86130e_010705.tif

REF:
JONES COUNTY SURVEY CREW
1939--F.A.-814

FD. LIMESTONE
NE COR.-30-86-1

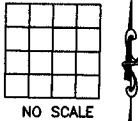
1435



PREVIOUSLY RECORDED IN BOOK _____, PAGE _____
MONUMENT DESCRIPTION AND HOW ESTABLISHED. FOUND
4"x10"x16" LIMESTONE WITH POINT UPL. SET 1/2"x36" IRON PIN UNDER
STONE. NORTHEAST CORNER OF SECTION 30, TOWNSHIP 86 NORTH,
RANGE 1 WEST OF THE 5TH PRINCIPAL MERIDIAN, JONES
COUNTY, IOWA.

CORNERS TO BE INDEXED

CORNER SECTION TOWNSHIP RANGE

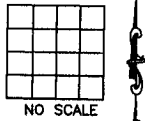


OFFICE FILE NO.

PREVIOUSLY RECORDED IN BOOK _____, PAGE _____
MONUMENT DESCRIPTION AND HOW ESTABLISHED _____

CORNERS TO BE INDEXED

CORNER SECTION TOWNSHIP RANGE



OFFICE FILE NO.

PREVIOUSLY RECORDED IN BOOK _____, PAGE _____
MONUMENT DESCRIPTION AND HOW ESTABLISHED _____

~~I hereby declare that this plat, survey or report was made by me or under my direct personal supervision and that I am a duly registered Land Surveyor under the laws of the State of Iowa.~~

Signed: _____

SEAL

JONES COUNTY ENGINEER'S OFFICE

19501 HWY. 64,
ANAMOSA, IOWA,
52205 (319)462-3785