

COPY

Jones County Marie Krutzfield Recorder
 Fee Book 2012 1149
 04/27/2012 @0216PM # Pages 1
 ZSC SEC COR CERT
 Total Fees: \$0.00

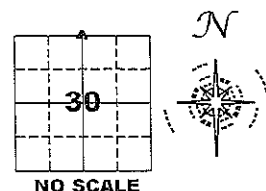
PREPARED BY
 CLARENCE J. WALTON, JONES COUNTY ENGINEER'S OFFICE, 19501 HWY. 64, ANAMOSA, IOWA, 52205 (319) 462-3785

UNITED STATES PUBLIC LAND SURVEY CORNER CERTIFICATE

LAND SURVEY MONUMENTS SITUATED IN SECTION 30, TOWNSHIP 86 NORTH,
 RANGE 1 WEST OF THE 5TH PRINCIPAL MERIDIAN, JONES COUNTY, IOWA.

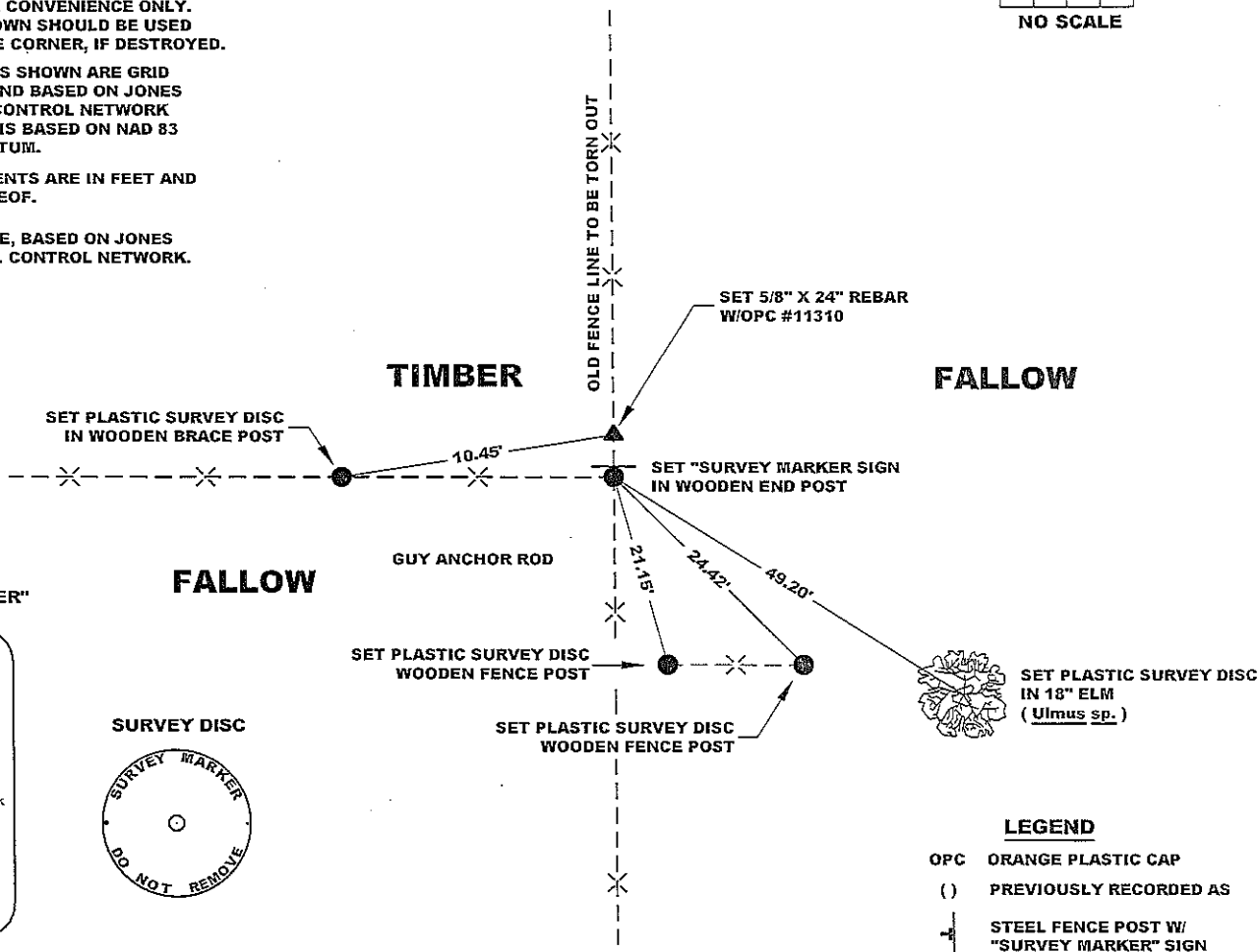
STATE PLANE COORDINATE
 NAD 83 IOWA NORTH
 N 3559648.04
 E 5596575.10

CORNER SECTION TOWNSHIP RANGE
 N 1/4 CORNER 30 T86N R1W



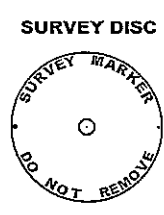
NOTES:

- 1) THE STATE PLANE COORDINATES AS SHOWN ARE FOR CONVENIENCE ONLY. THE TIES AS SHOWN SHOULD BE USED TO REPLACE THE CORNER, IF DESTROYED.
- 2) COORDINATES AS SHOWN ARE GRID COORDINATES AND BASED ON JONES COUNTY G.P.S. CONTROL NETWORK WHICH IN TURN IS BASED ON NAD 83 IOWA NORTH DATUM.
- 3) ALL MEASUREMENTS ARE IN FEET AND DECIMALS THEREOF.
- 4) * GRID DISTANCE, BASED ON JONES COUNTY G.P.S. CONTROL NETWORK.



"SURVEY MARKER" SIGN

PLEASE PROTECT NEARBY
SURVEY MARKER
 IF LOCATION OF THIS MARK IS ENDANGERED PLEASE CONTACT JONES COUNTY ENGINEER'S OFFICE 319-462-3785



- LEGEND**
- OPC ORANGE PLASTIC CAP
 - () PREVIOUSLY RECORDED AS
 - STEEL FENCE POST W/ "SURVEY MARKER" SIGN

PAGE 1 of 1

PREVIOUSLY RECORDED IN N/A
 MONUMENT DESCRIPTION AND HOW ESTABLISHED SET 5/8" X 24" REBAR WITH ORANGE PLASTIC CAP #11310 FLUSH WITH PRESENT GROUND SURFACE AT FENCE CORNER. USING A SURVEY DONE DECEMBER 9TH, 1870 BY H.D. SMITH-DEPUTY AND D.L. BLAKESLEE-COUNTY SURVEYOR, RECORDED IN THE RED "SURVEYOR'S RECORD" BOOK IN THE JONES COUNTY, IOWA RECORDER'S OFFICE, PAGE 462, THIS CORNER FITS CLOSELY WITH A MONUMENT FOUND AT THE NE CORNER OF THE SE 1/4 NW 1/4 OF SAID SECTION 30 (SEE RECORDER'S DOCUMENT 2012 0539) AND OTHER FENCE CORNERS IN THE AREA.
 FIELD BOOK 341, PAGE 64 DATE OF SURVEY: 4/23/12



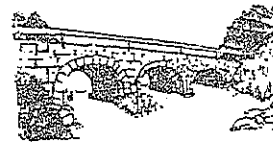
I hereby certify that this land surveying document and the related survey work was performed by me or under my direct personal supervision and that I am a duly registered Land Surveyor under the laws of the State of Iowa.
 Signed: *Clarence J. Walton* 4/27/12
 Clarence J. Walton, L.S.
 My Registration Renewal Date is December 31, 2013
 Iowa License Number 11310
 Pages or sheets covered by this seal: 1 of 1.

- A. THERE IS NO CERTIFICATE FOR THE CORNER ON FILE WITH THE RECORDER OF THE COUNTY IN WHICH THE CORNER IS LOCATED.
- B. THE CORNER MONUMENT HAS BEEN REPLACED OR MODIFIED.
- C. THE SURVEYOR IN RESPONSIBLE CHARGE OF THE LAND SURVEYING ACCEPTS A CORNER POSITION THAT DIFFERS FROM THAT SHOWN IN THE PUBLIC RECORDS OF THE COUNTY IN WHICH THE CORNER IS LOCATED.
- D. THE REFERENCE TIES REFERRED TO IN AN EXISTING PUBLIC RECORD NO LONGER EXIST.
- E. THIS CERTIFICATE FILED TO CORRECT PREVIOUS CERTIFICATE.

CORNERS TO BE INDEXED

CORNER	SECTION	TOWNSHIP	RANGE
N 1/4 CORNER	30	86N	1W
S 1/4 CORNER	19	86N	1W

JONES COUNTY ENGINEER'S OFFICE



19501 HWY. 64, ANAMOSA, IOWA 52205
 (319) 462-3785