

2005 3754

FILED
RECORDERS OFFICE
JONES COUNTY IOWA

05 OCT 21 AM 11:21

MARIE KRUTZFIELD
RECORDER 7.00 pd

Prepared by Wm. Burger Land Surveyors 510 3rd Street West Court, Warrington, Iowa Phone 563 - 855 2028

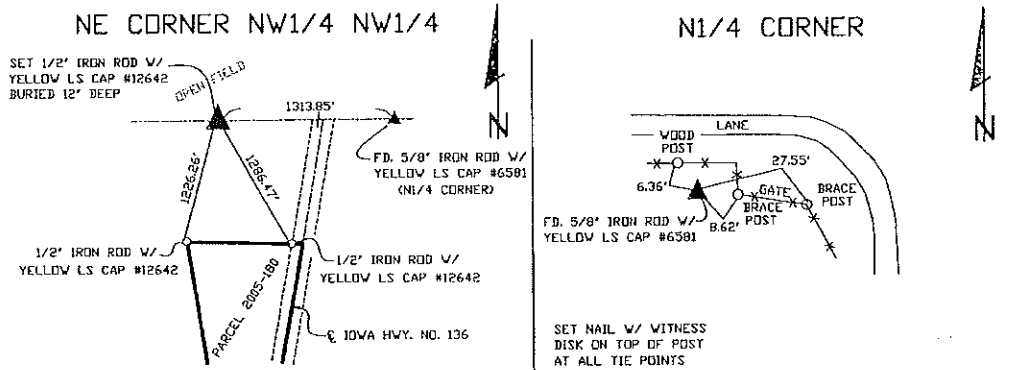
UNITED STATES PUBLIC LAND SURVEY CORNER CERTIFICATE

Land Survey Monuments situated in Section 32, Township 86N, Range 1W, of the Fifth Principal Meridian, Jones County, Iowa. Previously recorded in SEE NOTE In the Office of the County Recorder.

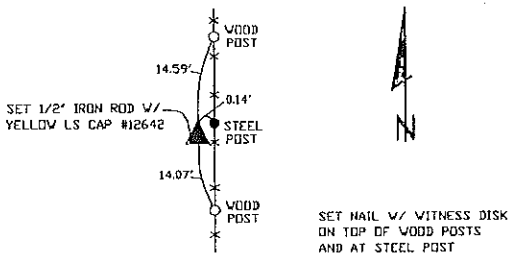
Monument Description and Remarks:

- NE CORNER NW1/4 NW1/4 - SET 1/2" IRON ROD W/YELLOW LS CAP #12642 BURIED 12" DEEP - SET ON LINE AND MIDWAY BETWEEN THE NW1/4 CORNER AND THE NW CORNER
- N1/4 CORNER - FOUND 5/8" IRON ROD W/ YELLOW LS CAP #6581
- NE CORNER SE1/4 NW1/4 - SET 1/2" IRON ROD W/YELLOW LS CAP #12642 - SET ON LINE AND MIDWAY BETWEEN THE CENTER OF SECTION AND THE N1/4 CORNER
- SW CORNER SE1/4 NW1/4 - SET 1/2" IRON ROD W/YELLOW LS CAP #12642 - SET ON LINE AND MIDWAY BETWEEN THE CENTER OF SECTION AND THE W1/4 CORNER
- NOTE: THE N1/4 CORNER WAS PREVIOUSLY RECORDED IN THE OFFICE OF THE JONES COUNTY RECORDER BOOK 343, PAGE 178

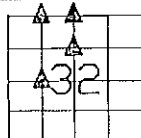
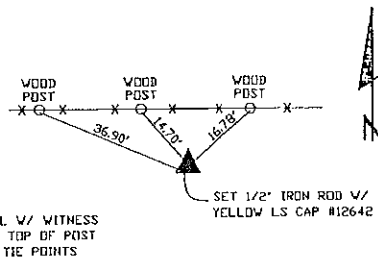
PLAN VIEW



NE CORNER SE1/4 NW1/4



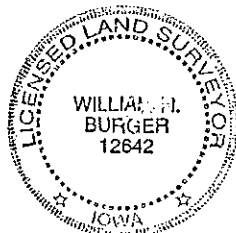
SW CORNER SE1/4 NW1/4



SEC. 32 TWP. 86N RANGE 1W

CORNERS TO BE INDEXED

NE CORNER NW1/4 NW1/4	32	86N	1W
N1/4 CORNER	32	86N	1W
NE CORNER SE1/4 NW1/4	32	86N	1W
SW CORNER SE1/4 NW1/4	32	86N	1W



I hereby certify that this land surveying document was prepared and related survey work was performed by me or under my direct personal supervision and that I am a duly licensed Land Surveyor under the laws of the State of Iowa.

William H. Burger 10/19/05
William H. Burger Date

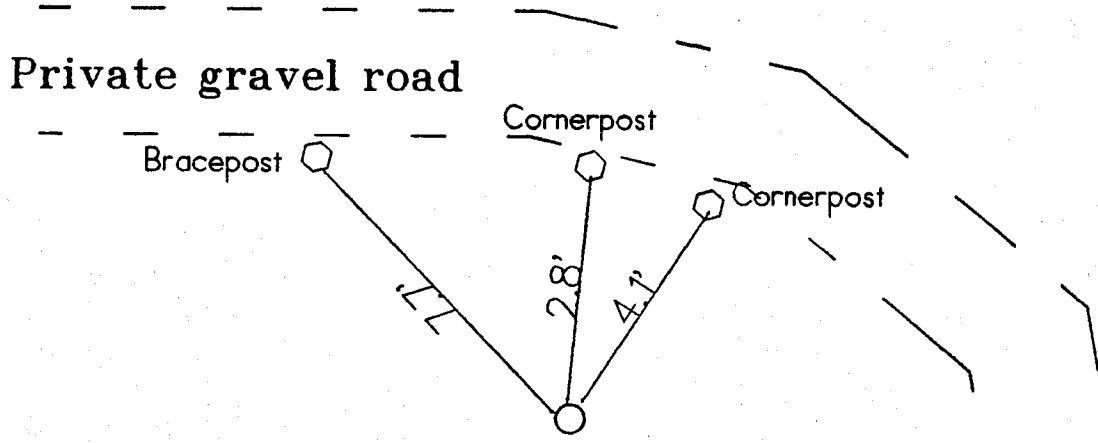
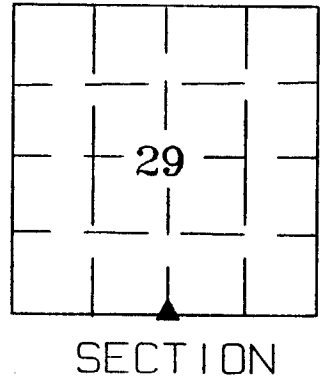
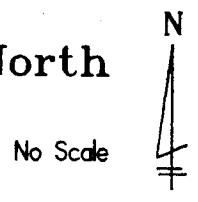
License number 12642

My license renewal date is December 31, 2006

Pages or Sheets covered by this seal Sheet 1 of 1

United States Public Land Survey Corner Certificate

Land survey corner in Section 29 Township 86 North
Range 1 West of the 5th Principal Meridian
Jones County, Iowa.



S 1/4 Corner
Sec 29-86-1
Set I.P. capped

ONCARD N 1/4 SEC 32
11-22-93 M.S.

Certification

I hereby certify that this plot and survey was made by me or under my direct supervision and that I am a duly Registered Land Surveyor under the laws of the State of Iowa.

Harold E. Dillon
Harold E. Dillon Reg.#6581

8/16/93
date

