

FEE BOOK: 2009 0138 1/15/2009 11:21 AM  
 REC FEES: NO FEE  
 PAGES: 1

Marie Krutzfield, Recorder  
 Jones County, Iowa

COPY

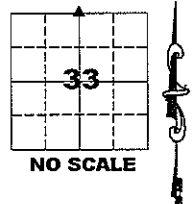
PREPARED BY  
 CLARENCE J. WALTON, JONES COUNTY ENGINEER'S OFFICE, 19501 HWY. 64, ANAMOSA, IOWA, 52205 (319) 462-3785

UNITED STATES PUBLIC LAND  
 SURVEY CORNER CERTIFICATE  
 LAND SURVEY MONUMENTS SITUATED IN SECTION 33, TOWNSHIP 86 NORTH,  
 RANGE 1 WEST OF THE 5TH PRINCIPAL MERIDIAN, JONES COUNTY, IOWA.

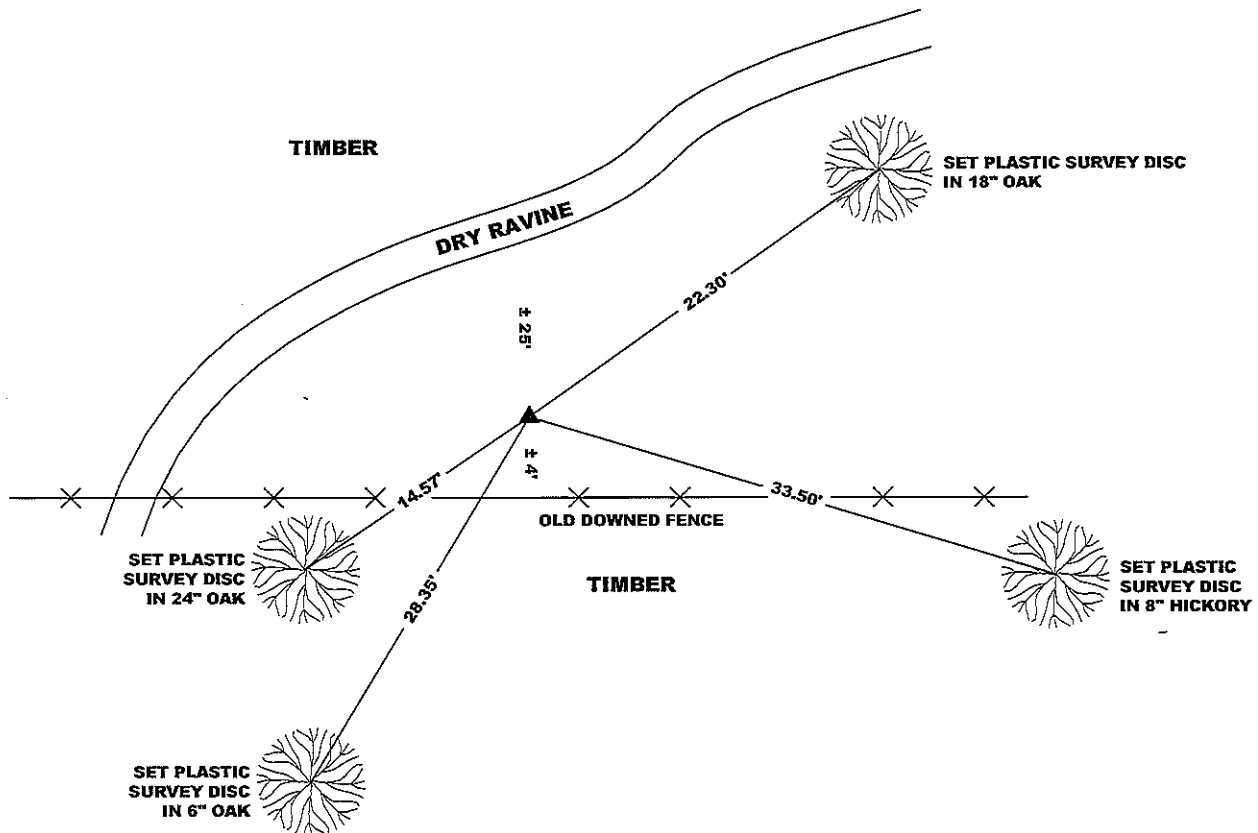
OFFICE FILE NO.

STATE PLANE COORDINATE  
 NAD 83 IOWA NORTH  
 N 3554599.15  
 E 5607465.96

CORNER SECTION TOWNSHIP RANGE  
 N 1/4 CORNER 33 T86N R1W



NOTE:  
 THE STATE PLANE COORDINATE AS INDICATED IS FOR CONVENIENCE ONLY.  
 THE TIES AS SHOWN SHOULD BE USED TO REPLACE THE CORNER, IF  
 DESTROYED

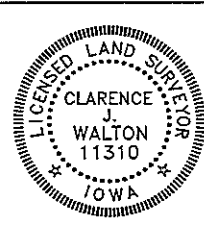


OPC ORANGE PLASTIC CAP  
 ( ) RECORDED AS

PREVIOUSLY RECORDED IN RECORDER'S DOCUMENT N/A  
 MONUMENT DESCRIPTION AND HOW ESTABLISHED SET 5/8" REBAR W/ ORANGE PLASTIC CAP #11310 6" ABOVE PRESENT SURFACE. SET STEEL FENCE POST W/ "SURVEY MARKER" SIGN AS WITNESS. CORNER WAS SET ON LINE AND EQUIDISTANT BETWEEN NW CORNER OF SECTION 33-T86N-R1W AND NE CORNER OF SECTION 33-T86N-R1W.

FIELD BOOK 344, PAGE 79. DATE OF SURVEY: 11/27/07

I hereby certify that this land surveying document and the related survey work was performed by me or under my direct personal supervision and that I am a duly registered Land Surveyor under the laws of the State of Iowa.  
 Signed: *Clarence J. Walton* 1/15/09  
 Clarence J. Walton, L.S.  
 My Registration Renewal Date is December 31, 2009  
 Iowa License Number 11310  
 Pages or sheets covered by this seal: 1 of 1.



- A. THERE IS NO CERTIFICATE FOR THE CORNER ON FILE WITH THE RECORDER OF THE COUNTY IN WHICH THE CORNER IS LOCATED.
- B. THE CORNER MONUMENT HAS BEEN REPLACED OR MODIFIED.
- C. THE SURVEYOR IN RESPONSIBLE CHARGE OF THE LAND SURVEYING ACCEPTS A CORNER POSITION THAT DIFFERS FROM THAT SHOWN IN THE PUBLIC RECORDS OF THE COUNTY IN WHICH THE CORNER IS LOCATED.
- D. THE REFERENCE TIES REFERRED TO IN AN EXISTING PUBLIC RECORD NO LONGER EXIST.

CORNERS TO BE INDEXED			
CORNER	SECTION	TOWNSHIP	RANGE
N 1/4 CORNER	33	86N	1W
S 1/4 CORNER	28	86N	1W

**JONES COUNTY ENGINEER'S OFFICE**

19501 HWY. 64, ANAMOSA, IOWA 52205  
 (319) 462-3785