

FEE BOOK: 2009 0137 1/15/2009 11:20 AM
 REC FEES: NO FEE
 PAGES: 1

Marie Krutzfield, Recorder
 Jones County, Iowa

COPY

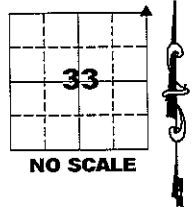
PREPARED BY
 CLARENCE J. WALTON, JONES COUNTY ENGINEER'S OFFICE, 19501 HWY. 64, ANAMOSA, IOWA, 52205 (319) 462-3785

UNITED STATES PUBLIC LAND
 SURVEY CORNER CERTIFICATE
 LAND SURVEY MONUMENTS SITUATED IN SECTION 33, TOWNSHIP 86 NORTH,
 RANGE 1 WEST OF THE 5TH PRINCIPAL MERIDIAN, JONES COUNTY, IOWA.

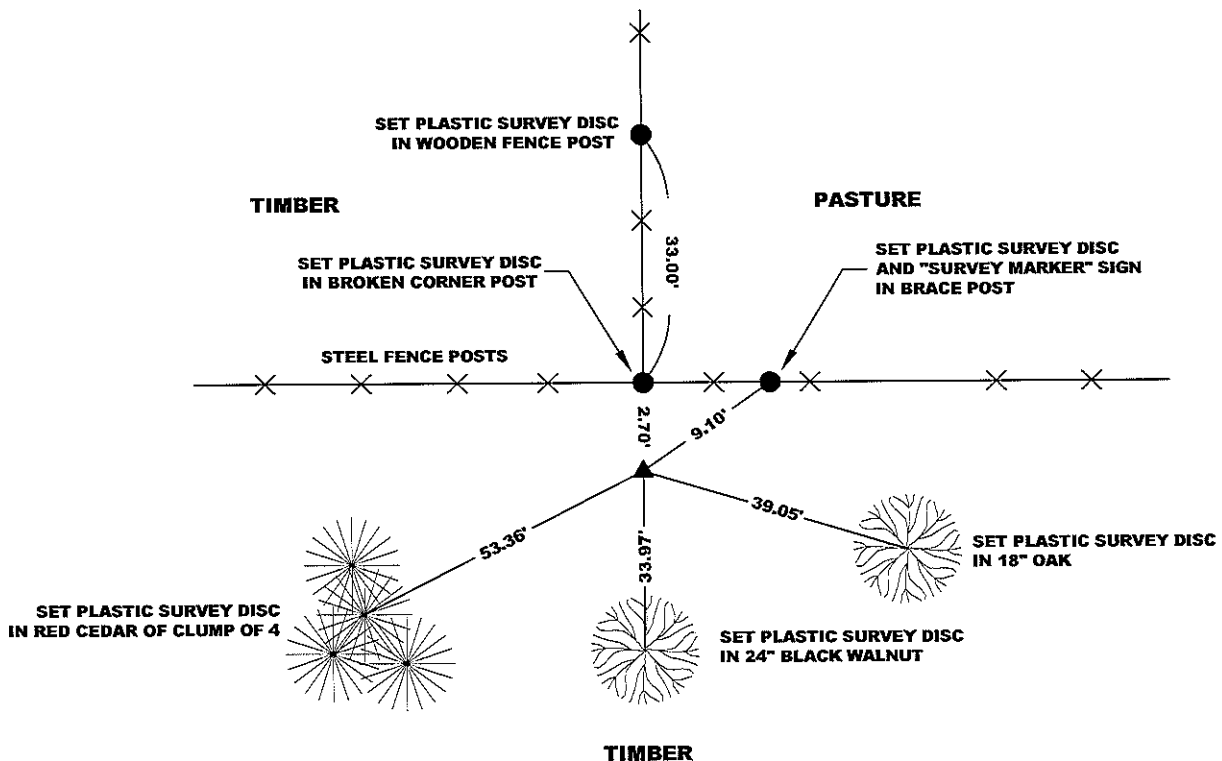
OFFICE FILE NO.

STATE PLANE COORDINATE
 NAD 83 IOWA NORTH
 N 3554655.58
 E 5610123.52

CORNER SECTION TOWNSHIP RANGE
 NE CORNER 33 T86N R1W



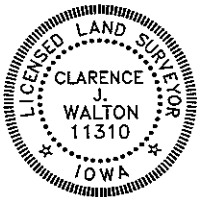
NOTE:
 THE STATE PLANE COORDINATE AS INDICATED IS FOR CONVENIENCE ONLY.
 THE TIES AS SHOWN SHOULD BE USED TO REPLACE THE CORNER, IF
 DESTROYED



OPC ORANGE PLASTIC CAP
 () RECORDED AS

PREVIOUSLY RECORDED IN RECORDER'S DOCUMENT N/A
 MONUMENT DESCRIPTION AND HOW ESTABLISHED FOUND 6" X 18" LIMESTONE STANDING ± 6" ABOVE GROUND.

FIELD BOOK 344, PAGE 79. DATE OF SURVEY: 11/09/07



I hereby certify that this land surveying document and the related survey work was performed by me or under my direct personal supervision and that I am a duly registered Land Surveyor under the laws of the State of Iowa.

Signed: *Clarence J. Walton* 1/15/09
 Clarence J. Walton, L.S.
 My Registration Renewal Date is December 31, 2009
 Iowa License Number 11310
 Pages or sheets covered by this seal: 1 of 1.

- A. THERE IS NO CERTIFICATE FOR THE CORNER ON FILE WITH THE RECORDER OF THE COUNTY IN WHICH THE CORNER IS LOCATED.
- B. THE CORNER MONUMENT HAS BEEN REPLACED OR MODIFIED.
- C. THE SURVEYOR IN RESPONSIBLE CHARGE OF THE LAND SURVEYING ACCEPTS A CORNER POSITION THAT DIFFERS FROM THAT SHOWN IN THE PUBLIC RECORDS OF THE COUNTY IN WHICH THE CORNER IS LOCATED.
- D. THE REFERENCE TIES REFERRED TO IN AN EXISTING PUBLIC RECORD NO LONGER EXIST.

JONES COUNTY ENGINEER'S OFFICE



19501 HWY. 64, ANAMOSA, IOWA 52205
 (319) 462-3785

CORNERS TO BE INDEXED

CORNER	SECTION	TOWNSHIP	RANGE
NE CORNER	33	86N	1W
SW CORNER	27	86N	1W
NW CORNER	34	86N	1W
SE CORNER	28	86N	1W