

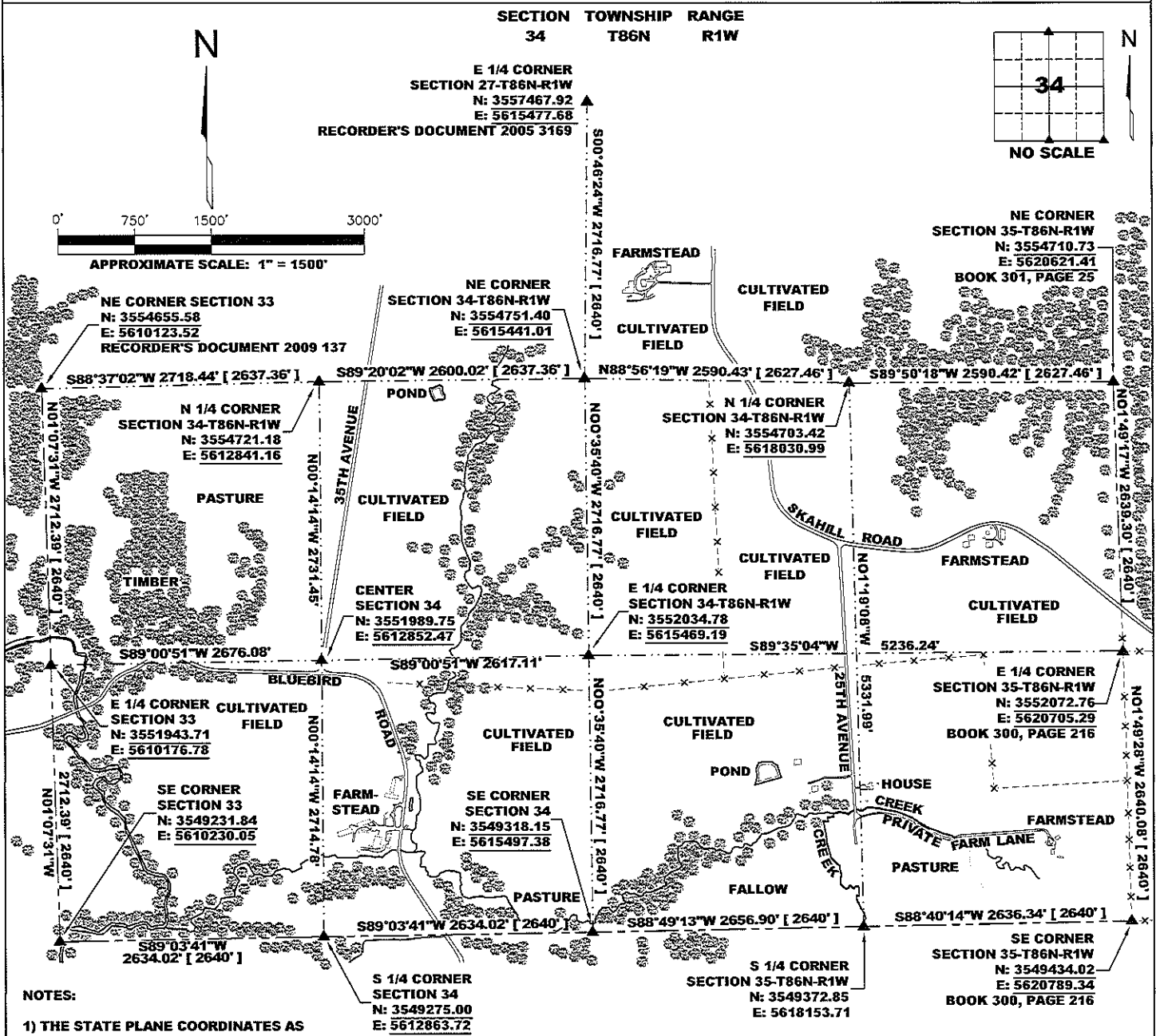
COPY

Jones County  
Marie Krutzfield, Recorder  
Fee Book 2010 1289

05/19/2010 @1242PM  
NSC SEC COR CERT  
Book: Page: # Pages: 4  
Total Fees: \$0.00

PREPARED BY  
CLARENCE J. WALTON, JONES COUNTY ENGINEER'S OFFICE, 19501 HWY. 64, ANAMOSA, IOWA, 52205 (319) 462-3785

COVER SHEET  
UNITED STATES PUBLIC LAND SURVEY CORNER CERTIFICATE  
LAND SURVEY MONUMENTS SITUATED IN SECTION 34, TOWNSHIP 86 NORTH,  
RANGE 1 WEST OF THE 5TH PRINCIPAL MERIDIAN, JONES COUNTY, IOWA.



NOTES:

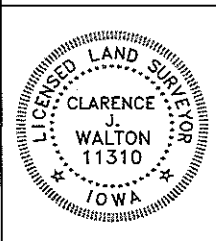
- 1) THE STATE PLANE COORDINATES AS SHOWN ARE FOR CONVENIENCE ONLY. THE TIES AS SHOWN SHOULD BE USED TO REPLACE THE CORNER, IF DESTROYED.
- 2) COORDINATES AS SHOWN ARE GRID COORDINATES AND BASED ON JONES COUNTY G.P.S. CONTROL NETWORK WHICH IN TURN IS BASED ON NAD 83 IOWA NORTH DATUM.
- 3) BASIS OF BEARINGS ARE BASED ON JONES COUNTY G.P.S. CONTROL NETWORK.
- 4) ALL MEASUREMENTS ARE IN FEET AND DECIMALS THEREOF. DISTANCES ON THIS COVER SHEET ARE GRID DISTANCES.

- 5) APPROXIMATE SCALE IS GIVEN IN ORDER TO FACILITATE NAVIGATION TO CORNERS IN CASE GPS IS NOT USED.
- 6) NOT ALL SECTION CORNERS SHOWN HERE HAVE BEEN SET AS OF YET. THEY WILL BE SET TENTATIVELY IN THE FALL OF 2010. PLEASE CHECK THE RECORDS OF THE JONES COUNTY, IOWA RECORDER FOR THOSE THAT DO HAVE SECTION CORNER CERTIFICATES ON FILE.

LEGEND

- HARDWOOD TIMBER
- FENCE LINE
- ( ) RECORDED AS PER ORIGINAL GOVERNMENT SURVEY FIELD NOTES
- [ ]

PAGE 1 of 4



I hereby certify that this land surveying document and the related survey work was performed by me or under my direct personal supervision and that I am a duly registered Land Surveyor under the laws of the State of Iowa.  
Signed: *Clarence J. Walton* 5/3/10  
Clarence J. Walton, L.S.  
My Registration Renewal Date is December 31, 2011  
Iowa License Number 11310  
Pages or sheets covered by this seal: 1 of 4.

JONES COUNTY ENGINEER'S OFFICE



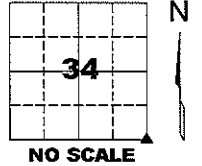
19501 HWY. 64, ANAMOSA, IOWA 52205  
(319) 462-3785

# UNITED STATES PUBLIC LAND SURVEY CORNER CERTIFICATE

**LAND SURVEY MONUMENTS SITUATED IN SECTION 34, TOWNSHIP 86 NORTH,  
 RANGE 1 WEST OF THE 5TH PRINCIPAL MERIDIAN, JONES COUNTY, IOWA.**

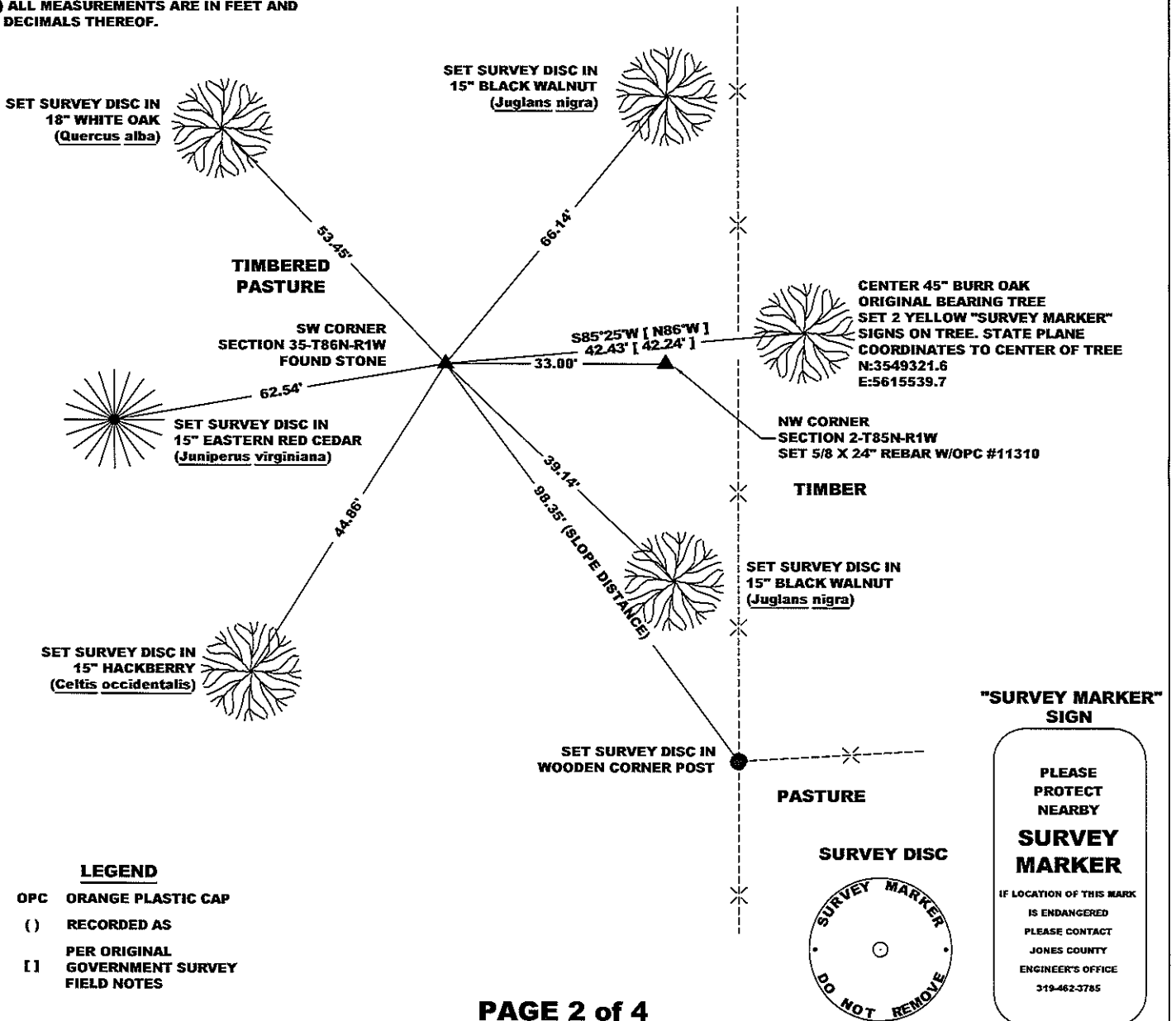
STATE PLANE COORDINATE  
 NAD 83 IOWA NORTH  
 N 3549318.15  
 E 5615497.38

CORNER SECTION TOWNSHIP RANGE  
 SE CORNER 34 T86N R1W



**NOTES:**

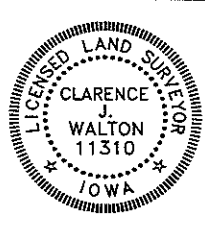
- 1) THE STATE PLANE COORDINATES AS SHOWN ARE FOR CONVENIENCE ONLY. THE TIES AS SHOWN SHOULD BE USED TO REPLACE THE CORNER, IF DESTROYED.
- 2) COORDINATES AS SHOWN ARE GRID COORDINATES AND BASED ON JONES COUNTY G.P.S. CONTROL NETWORK WHICH IN TURN IS BASED ON NAD 83 IOWA NORTH DATUM.
- 3) ALL MEASUREMENTS ARE IN FEET AND DECIMALS THEREOF.



**PAGE 2 of 4**

PREVIOUSLY RECORDED IN N/A

**MONUMENT DESCRIPTION AND HOW ESTABLISHED** FOUND 12" X 16" 12" LIMESTONE FLUSH WITH PRESENT GROUND. SET 5/8" X 24" REBAR WITH ORANGE PLASTIC CAP #11310 ON NORTH SIDE OF STONE FOR DETECTION PURPOSES. SET STEEL FENCE POST WITH YELLOW "SURVEY MARKER" SIGN ON THE SOUTH SIDE OF STONE AS A WITNESS TO THIS CORNER. FOUND STONE BY USING BEARING TREE TO EAST. BEARING AND DISTANCE FROM CENTER OF TREE TO CENTER OF STONE CLOSELY MATCH THOSE IN THE ORIGINAL GOVERNMENT FIELD NOTES. SEE PAGES 6, 7, & 8 OF 10 FOR FURTHER NOTES. FIELD BOOK 344, PAGE 70. DATE OF SURVEY: 11/4/09



I hereby certify that this land surveying document and the related survey work was performed by me or under my direct personal supervision and that I am a duly registered Land Surveyor under the laws of the State of Iowa.  
 Signed: *Clarence J. Walton* 5/3/10  
 Clarence J. Walton, L.S.  
 My Registration Renewal Date is December 31, 2011  
 Iowa License Number 11310  
 Pages or sheets covered by this seal: 2 of 4.

- A. THERE IS NO CERTIFICATE FOR THE CORNER ON FILE WITH THE RECORDER OF THE COUNTY IN WHICH THE CORNER IS LOCATED.
- B. THE CORNER MONUMENT HAS BEEN REPLACED OR MODIFIED.
- C. THE SURVEYOR IN RESPONSIBLE CHARGE OF THE LAND SURVEYING ACCEPTS A CORNER POSITION THAT DIFFERS FROM THAT SHOWN IN IN THE PUBLIC RECORDS OF THE COUNTY IN WHICH THE CORNER IS LOCATED.
- D. THE REFERENCE TIES REFERRED TO IN AN EXISTING PUBLIC RECORD NO LONGER EXIST.
- E. EXISTING CORNER TIES UPDATED.

**CORNERS TO BE INDEXED**

CORNER	SECTION	TOWNSHIP	RANGE
SE CORNER	34	86N	1W
SW CORNER	35	86N	1W

**JONES COUNTY ENGINEER'S OFFICE**



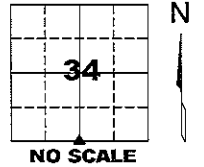
19501 HWY. 64, ANAMOSA, IOWA 52205  
 (319) 462-3785

# UNITED STATES PUBLIC LAND SURVEY CORNER CERTIFICATE

LAND SURVEY MONUMENTS SITUATED IN SECTION 34, TOWNSHIP 86 NORTH,  
 RANGE 1 WEST OF THE 5TH PRINCIPAL MERIDIAN, JONES COUNTY, IOWA.

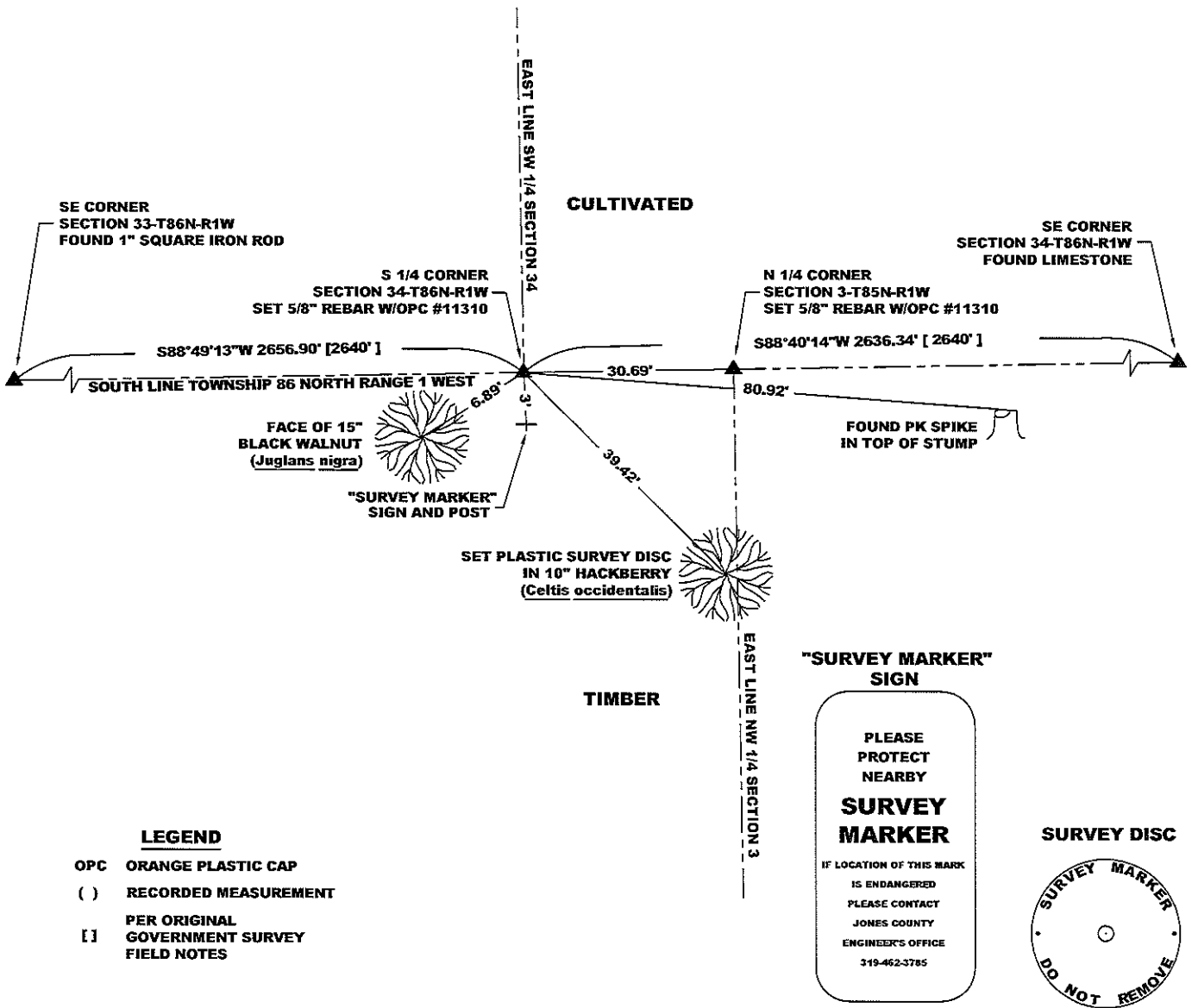
STATE PLANE COORDINATE  
 NAD 83 IOWA NORTH  
 N 3549275.00  
 E 5612863.72

CORNER SECTION TOWNSHIP RANGE  
 S 1/4 CORNER 34 T86N R1W



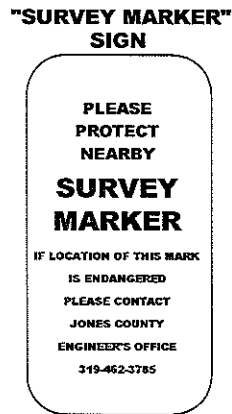
**NOTES:**

- 1) THE STATE PLANE COORDINATES AS SHOWN ARE FOR CONVENIENCE ONLY. THE TIES AS SHOWN SHOULD BE USED TO REPLACE THE CORNER, IF DESTROYED.
- 2) COORDINATES AS SHOWN ARE GRID COORDINATES AND BASED ON JONES COUNTY G.P.S. CONTROL NETWORK WHICH IN TURN IS BASED ON NAD 83 IOWA NORTH DATUM.
- 3) ALL MEASUREMENTS ARE IN FEET AND DECIMALS THEREOF.



**LEGEND**

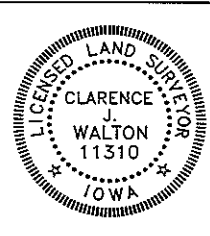
- OPC ORANGE PLASTIC CAP
- ( ) RECORDED MEASUREMENT
- PER ORIGINAL GOVERNMENT SURVEY FIELD NOTES



**PAGE 3 of 4**

PREVIOUSLY RECORDED IN N/A  
 MONUMENT DESCRIPTION AND HOW ESTABLISHED SET 5/8\"

FIELD BOOK 344, PAGE 65. DATE OF SURVEY: 5/10/10



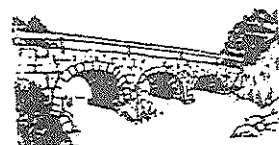
I hereby certify that this land surveying document and the related survey work was performed by me or under my direct personal supervision and that I am a duly registered Land Surveyor under the laws of the State of Iowa.  
 Signed: *Clarence J. Walton* 5/3/10  
 Clarence J. Walton, L.S.  
 My Registration Renewal Date is December 31, 2011  
 Iowa License Number 11310  
 Pages or sheets covered by this seal: 3 of 4.

- A. THERE IS NO CERTIFICATE FOR THE CORNER ON FILE WITH THE RECORDER OF THE COUNTY IN WHICH THE CORNER IS LOCATED.
- B. THE CORNER MONUMENT HAS BEEN REPLACED OR MODIFIED.
- C. THE SURVEYOR IN RESPONSIBLE CHARGE OF THE LAND SURVEYING ACCEPTS A CORNER POSITION THAT DIFFERS FROM THAT SHOWN IN THE PUBLIC RECORDS OF THE COUNTY IN WHICH THE CORNER IS LOCATED.
- D. THE REFERENCE TIES REFERRED TO IN AN EXISTING PUBLIC RECORD NO LONGER EXIST.
- E. EXISTING CORNER TIES UPDATED.

**CORNERS TO BE INDEXED**

CORNER	SECTION	TOWNSHIP	RANGE
S 1/4 CORNER	34	86N	1W

**JONES COUNTY ENGINEER'S OFFICE**



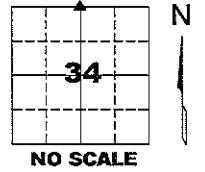
19501 HWY. 64, ANAMOSA, IOWA 52205  
 (319) 462-3785

# UNITED STATES PUBLIC LAND SURVEY CORNER CERTIFICATE

**LAND SURVEY MONUMENTS SITUATED IN SECTION 34, TOWNSHIP 86 NORTH,  
 RANGE 1 WEST OF THE 5TH PRINCIPAL MERIDIAN, JONES COUNTY, IOWA.**

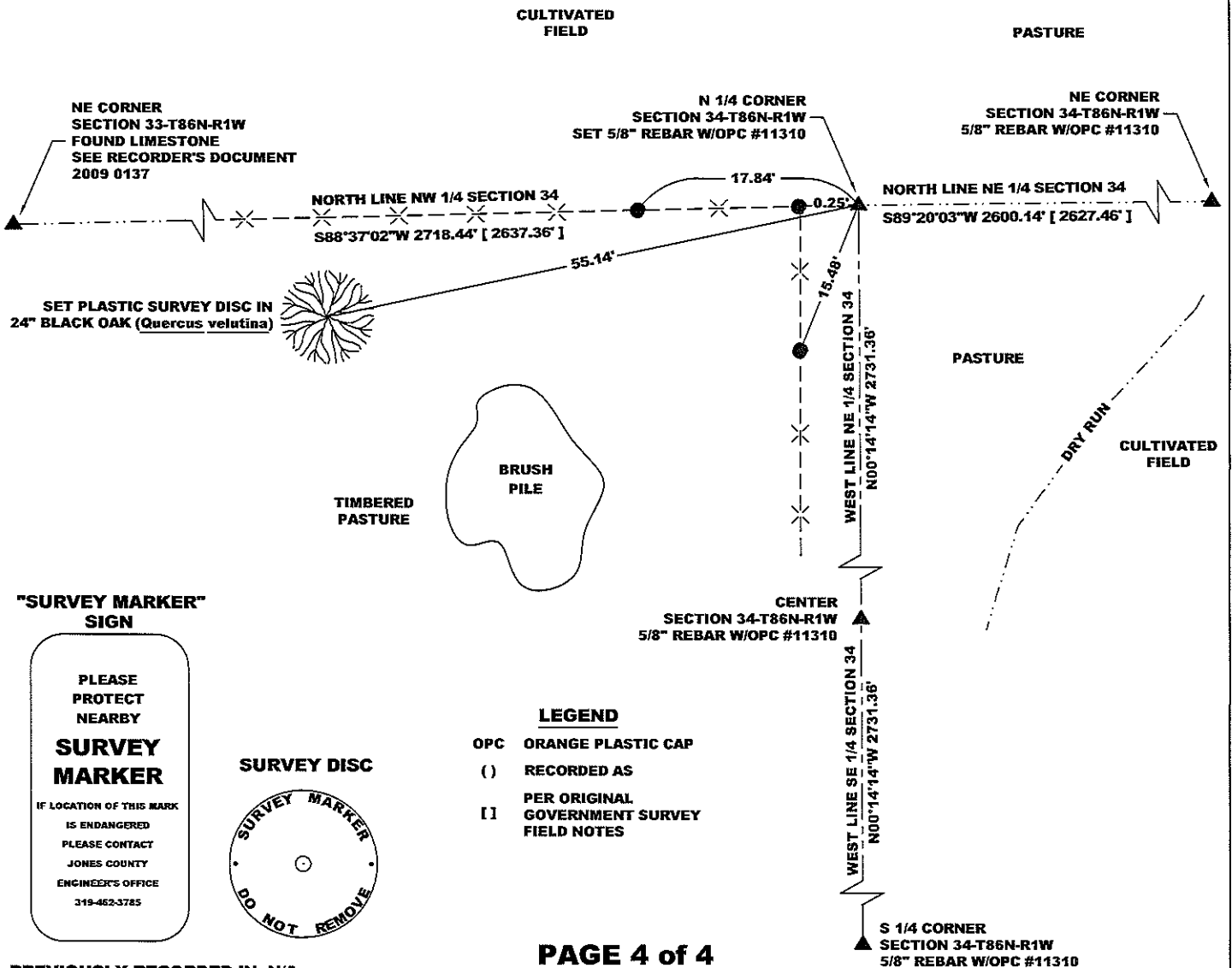
STATE PLANE COORDINATE  
 NAD 83 IOWA NORTH  
 N 3554721.18  
 E 5612841.16

CORNER SECTION TOWNSHIP RANGE  
 N 1/4 CORNER 34 T86N R1W



**NOTES:**

- 1) THE STATE PLANE COORDINATES AS SHOWN ARE FOR CONVENIENCE ONLY. THE TIES AS SHOWN SHOULD BE USED TO REPLACE THE CORNER, IF DESTROYED.
- 2) COORDINATES AS SHOWN ARE GRID COORDINATES AND BASED ON JONES COUNTY G.P.S. CONTROL NETWORK WHICH IN TURN IS BASED ON NAD 83 IOWA NORTH DATUM.
- 3) ALL MEASUREMENTS ARE IN FEET AND DECIMALS THEREOF.



**"SURVEY MARKER" SIGN**



**SURVEY DISC**



**LEGEND**

- OPC ORANGE PLASTIC CAP
- ( ) RECORDED AS
- [ ] PER ORIGINAL GOVERNMENT SURVEY FIELD NOTES

**PAGE 4 of 4**

PREVIOUSLY RECORDED IN N/A

**MONUMENT DESCRIPTION AND HOW ESTABLISHED** SET 5/8" REBAR W/ ORANGE PLASTIC CAP #11310 1" ABOVE SURFACE ON EAST SIDE OF FENCE CORNER POST. 1940 AERIAL PHOTO SHOWS FENCE CORNER IN SAME LOCATION WITH FENCE LINES TO WEST AND TO NORTH AND SOUTH. TREES IN FENCE LINES ARE LARGE INDICATING FENCE HAD BEEN IN PLACE FOR SOME TIME TALKING WITH LAND OWNER, WE FOUND THAT THE FENCE HAD BEEN IN SAME PLACE BEFORE HE PURCHASED THE LAND AND THAT THE FENCE WAS A PROPERTY DIVISION FENCE AT THAT TIME. AREA IS STREWN WITH NUMEROUS STONES BUT NONE OF A PROPER SIZE WERE FOUND NEAR CORNER POST.

FIELD BOOK 344, PAGE 73. DATE OF SURVEY: 11/23/09



I hereby certify that this land surveying document and the related survey work was performed by me or under my direct personal supervision and that I am a duly registered Land Surveyor under the laws of the State of Iowa.  
 Signed: *Clarence J. Walton* 5/3/10  
 Clarence J. Walton, L.S.  
 My Registration Renewal Date is December 31, 2011  
 Iowa License Number 11310  
 Pages or sheets covered by this seal: 4 of 4.

- A. THERE IS NO CERTIFICATE FOR THE CORNER ON FILE WITH THE RECORDER OF THE COUNTY IN WHICH THE CORNER IS LOCATED.
- B. THE CORNER MONUMENT HAS BEEN REPLACED OR MODIFIED.
- C. THE SURVEYOR IN RESPONSIBLE CHARGE OF THE LAND SURVEYING ACCEPTS A CORNER POSITION THAT DIFFERS FROM THAT SHOWN IN THE PUBLIC RECORDS OF THE COUNTY IN WHICH THE CORNER IS LOCATED.
- D. THE REFERENCE TIES REFERRED TO IN AN EXISTING PUBLIC RECORD NO LONGER EXIST.
- E. EXISTING CORNER TIES UPDATED.

**CORNERS TO BE INDEXED**

CORNER	SECTION	TOWNSHIP	RANGE
N 1/4 CORNER	34	86N	1W
S 1/4 CORNER	27	86N	1W

**JONES COUNTY ENGINEER'S OFFICE**



19501 HWY. 64, ANAMOSA, IOWA 52205  
 (319) 462-3785