

**UNITED STATES PUBLIC LAND SURVEY CORNER CERTIFICATE**

OF

Land Survey Monuments situated in Section 36, Township 86 N, Range 1 W, of the Fifth Principal Meridian, JONES County, Iowa.  
 Previously recorded in \_\_\_\_\_ in County Recorder's Office.

(book, page, document number, etc.)

(Show reason for preparing this certificate, the evidence and detailed procedures used in establishing the corner positions and monumentation found or placed.)

Monument Description and Remarks: NW Corner - Set 1/2" Iron Pin

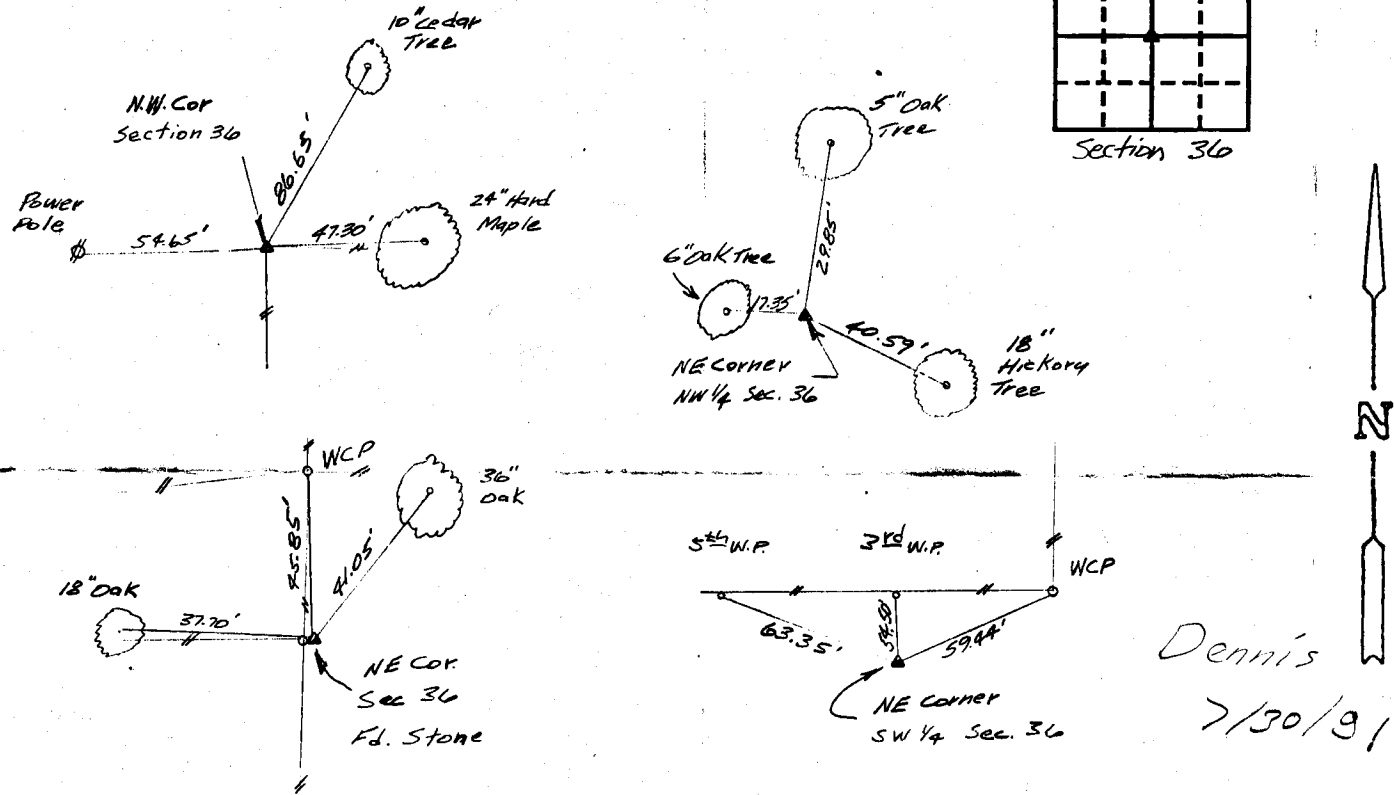
NE Corner NW 1/4 - Set 1/2" Iron Pin

NE Corner - Found Limestone Set 1/2" Rebar

NE Corner SW 1/4 - Set 1/2" Iron Pin

**PLAN - VIEW**

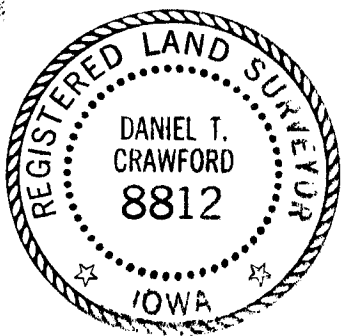
(Show a minimum of three reference ties to durable physical objects, relevant monuments and physical conditions that will enable recovery of the corner.)



I hereby certify that the survey work was completed and this certificate was prepared by me or under my direct personal supervision and that I am a duly registered land surveyor under the laws of the state of Iowa.

Signature: Daniel T. Crawford  
 Name typed or printed: Daniel T. Crawford, R.L.S.

Date: 4/18/91 Reg. No. 8812



SEAL

Corners	Section	Twp	Range
NW CORNER	36	86 N	1 W
NE CORNER NW 1/4	36	86 N	1 W
NE CORNER	36	86 N	1 W
NE CORNER SW 1/4	36	86 N	1 W