

THIS IS NOT A CERTIFICATION

C

JONES COUNTY ENGINEER'S OFFICE, 19501 HWY. 64, ANAMOSA, IOWA, 52205 (319)462-3785

UNITED STATES PUBLIC LAND SURVEY CORNER CERTIFICATE

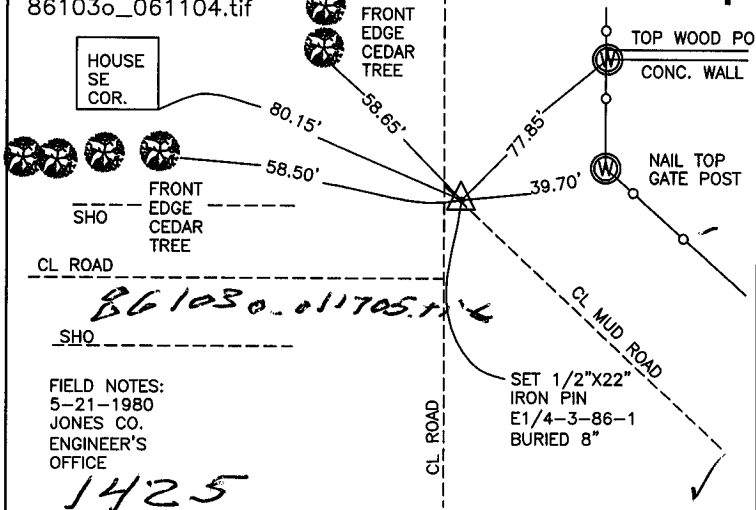
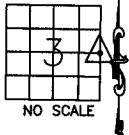
LAND SURVEY MONUMENTS SITUATED IN SECTION 3, TOWNSHIP 86 NORTH, RANGE 1 WEST OF THE 5TH P.M., JONES COUNTY, IOWA

CORNERS TO BE INDEXED

CORNER SECTION TOWNSHIP RANGE
E1/4 3 86N 1W

OFFICE FILE NO.

86103o_061104.tif



FIELD NOTES:
5-21-1980
JONES CO.
ENGINEER'S
OFFICE

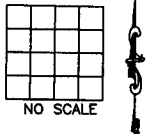
PREVIOUSLY RECORDED IN BOOK NA, PAGE BC

MONUMENT DESCRIPTION AND HOW ESTABLISHED
DUG & FOUND LIMESTONE 12"x7"x5" LAYING ON ITS SIDE. LOWERED STONE TO A DEPTH OF 30", SET 1/2"x22" IRON PIN ON TOP, BURIED 8" BELOW PRESENT ROADTOP. STONE & PIN 11' NORTH OF CL ROAD WEST & 3.5' EAST OF CL ROAD NORTH-SOUTH. E1/4 COR. SECTION 3 T86N R1W.

CORNERS TO BE INDEXED

CORNER SECTION TOWNSHIP RANGE

OFFICE FILE NO.

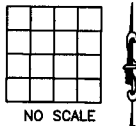


PREVIOUSLY RECORDED IN BOOK _____, PAGE _____
MONUMENT DESCRIPTION AND HOW ESTABLISHED _____

CORNERS TO BE INDEXED

CORNER SECTION TOWNSHIP RANGE

OFFICE FILE NO.

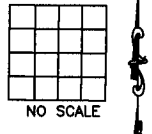


PREVIOUSLY RECORDED IN BOOK _____, PAGE _____
MONUMENT DESCRIPTION AND HOW ESTABLISHED _____

CORNERS TO BE INDEXED

CORNER SECTION TOWNSHIP RANGE

OFFICE FILE NO.



PREVIOUSLY RECORDED IN BOOK _____, PAGE _____
MONUMENT DESCRIPTION AND HOW ESTABLISHED _____

~~I hereby declare that this plat, survey or report was made by me or under my direct personal supervision and that I am a duly registered Land Surveyor under the laws of the State of Iowa.~~

Signed:

SEAL

JONES COUNTY ENGINEER'S OFFICE

19501 HWY. 64,
ANAMOSA, IOWA,
52205 (319)462-3785