

SECTION CORNER CERTIFICATE

OF
 LAND SURVEY MONUMENTS SITUATED IN SECTION 3, TOWNSHIP 86 NORTH,
 RANGE 1 WEST, OF THE FIFTH PRINCIPAL MERIDIAN, Jones, COUNTY, IOWA.

PREVIOUSLY RECORDED IN BOOK _____ AT PAGE _____ .

FOR RECORDER'S USE

REASON FOR PREPARING CERTIFICATE:

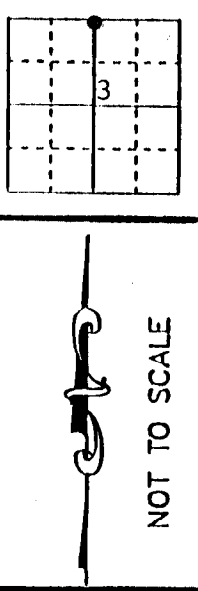
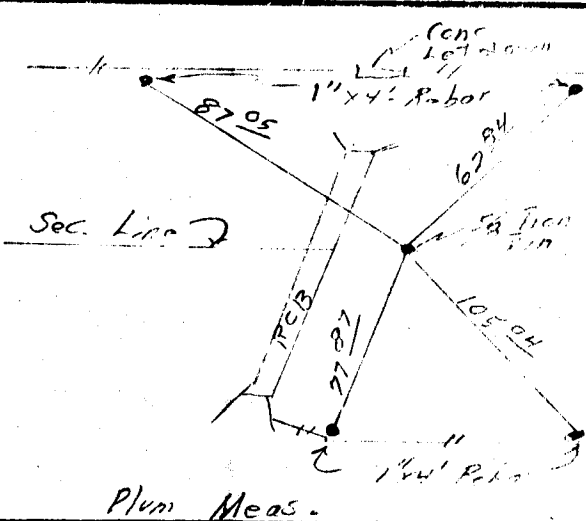
- A) THERE IS NO CERTIFICATE FOR THE CORNER ON FILE WITH THE RECORDER OF THE COUNTY IN WHICH THE CORNER IS LOCATED.
- B) CORNER POSITION DIFFERS FROM THAT SHOWN IN THE PUBLIC RECORDS OF THE COUNTY IN WHICH THE CORNER IS LOCATED.
- C) THE CORNER MONUMENT HAS BEEN REPLACED OR MODIFIED.
- D) THE REFERENCE TIES REFERRED TO IN AN EXISTING PUBLIC RECORD ARE INCORRECT.

MONUMENT DESCRIPTION AND REMARKS:

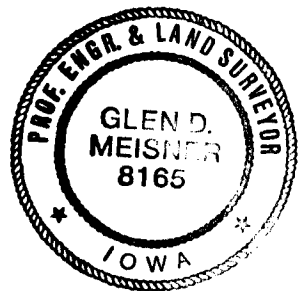
Project property line from center Sec. 3 North to intersection.
 East-West section line dug, found nothing, set iron pin on intersection
 of South property line and North line.

RECOVERY TIE DRAWING

N $\frac{1}{4}$ corner Sec. 3-86-1



I, GLEN D. MEISNER, CERTIFY THAT THE CORNER LOCATION(S) SHOWN ON THIS RECORD WERE DETERMINED BY ME OR UNDER MY DIRECTION AND CONTROL AND THAT THIS U.S. PUBLIC LAND SURVEY MONUMENT RECORD IS CORRECT AND COMPLETE TO THE BEST OF MY KNOWLEDGE AND BELIEF.



Glen D. Meisner 12-18-90
 GLEN D. MEISNER L.S. NO 8165 DATE

- GOVERNMENT CORNER
- 5/8" TIE PIN SET
- CENTERLINE
- EXISTING FENCE LINE
- R.O.W. LINE

SHEET NO. _____ U.S. PUBLIC LAND SURVEY RECORD PROJECT TITLE _____

HALL AND HALL ENGINEERS, INC.
 226 29TH STREET DRIVE S.E.
 CEDAR RAPIDS, IOWA 52403
 319-362-9548

D	W	S	E	A	P	D	A	T	E	S	C	A	L	E
---	---	---	---	---	---	---	---	---	---	---	---	---	---	---