

SECTION CORNER CERTIFICATE

OF
 LAND SURVEY MONUMENTS SITUATED IN SECTION 3, TOWNSHIP 86 NORTH,
 RANGE 1 WEST, OF THE FIFTH PRINCIPAL MERIDIAN, Jones, COUNTY, IOWA.

PREVIOUSLY RECORDED IN BOOK _____ AT PAGE _____

FOR RECORDER'S USE

REASON FOR PREPARING CERTIFICATE:

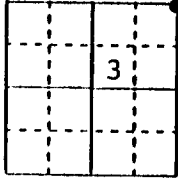
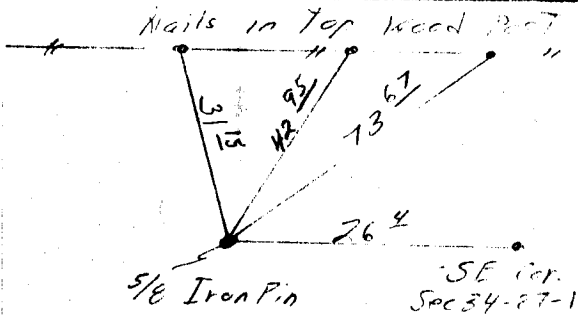
- A) THERE IS NO CERTIFICATE FOR THE CORNER ON FILE WITH THE RECORDER OF THE COUNTY IN WHICH THE CORNER IS LOCATED.
- B) CORNER POSITION DIFFERS FROM THAT SHOWN IN THE PUBLIC RECORDS OF THE COUNTY IN WHICH THE CORNER IS LOCATED.
- C) THE CORNER MONUMENT HAS BEEN REPLACED OR MODIFIED.
- D) THE REFERENCE TIES REFERRED TO IN AN EXISTING PUBLIC RECORD ARE INCORRECT.

MONUMENT DESCRIPTION AND REMARKS :

Found 80dd spike set in asphalt mat 6-12-84. Reset with 5/8"x24" Iron Pin.

RECOVERY TIE DRAWING

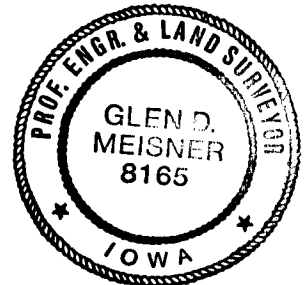
NE Corner Section 3-86-1



NOT TO SCALE

*ON
Cord
1-4-91*

I, GLEN D. MEISNER, CERTIFY THAT THE CORNER LOCATION(S) SHOWN ON THIS RECORD WERE DETERMINED BY ME OR UNDER MY DIRECTION AND CONTROL AND THAT THIS U.S. PUBLIC LAND SURVEY MONUMENT RECORD IS CORRECT AND COMPLETE TO THE BEST OF MY KNOWLEDGE AND BELIEF.



Glen D. Meisner 12-18-90
 GLEN D. MEISNER L.S. NO 8165 DATE

GOVERNMENT CORNER 5/8" IRON PIN SET CENTERLINE EXISTING FENCE LINE R.O.W. LINE	U.S. PUBLIC LAND SURVEY RECORD	HALL AND HALL ENGINEERS, INC. 226 29TH STREET DRIVE S.E. CEDAR RAPIDS, IOWA 52403 319-362-9548
D BY	S HEET	S CALE
R EG	D ATE	F NO

THIS IS NOT A CERTIFICATION

2

JONES COUNTY ENGINEER'S OFFICE, 19501 HWY. 64, ANAMOSA, IOWA, 52205 (319)462-3785

UNITED STATES PUBLIC LAND SURVEY CORNER CERTIFICATE

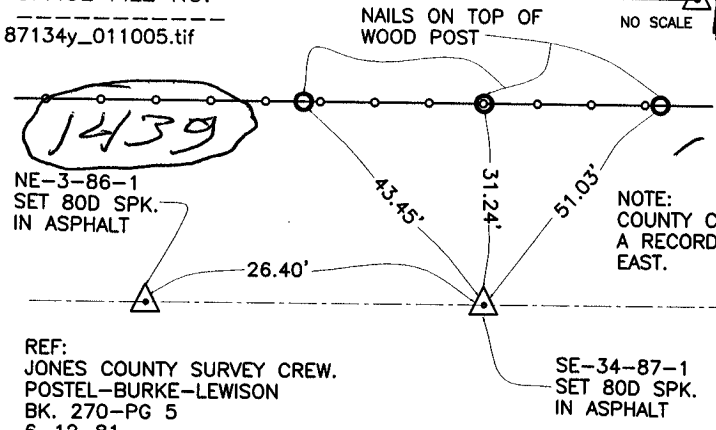
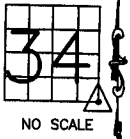
LAND SURVEY MONUMENTS SITUATED IN SECTION 34, TOWNSHIP 87 NORTH, RANGE 1 WEST OF THE 5TH P.M., JONES COUNTY, IOWA

CORNERS TO BE INDEXED

CORNER SECTION TOWNSHIP RANGE
SOUTHEAST 34 87N 1W

OFFICE FILE NO.

87134y_011005.tif



NOTE: COUNTY CREW MUST HAVE HAD A RECORD TIE TO PROPERTY LINE EAST.

REF:
JONES COUNTY SURVEY CREW.
POSTEL-BURKE-LEWISON
BK. 270-PG 5
6-12-81

SE-34-87-1
SET 80D SPK.
IN ASPHALT

COUNTY ROAD D-62

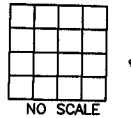
86134y_011705.tif

PREVIOUSLY RECORDED IN BOOK _____, PAGE _____
MONUMENT DESCRIPTION AND HOW ESTABLISHED SET 80d SPIKE IN ASPHALT MAT. MEASURED 672' FROM PROP. LINE EAST, SPLIT ROW FENCES. ORIGINAL STONE GONE DUE TO CONSTRUCTION. TIES AS SHOWN SOUTHEAST CORNER SECTION 34, TOWNSHIP 87 NORTH, RANGE 1 WEST OF 5TH PRINCIPAL MERIDIAN, JONES COUNTY, IOWA.

CORNERS TO BE INDEXED

CORNER SECTION TOWNSHIP RANGE

OFFICE FILE NO.

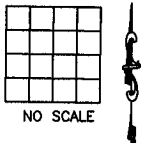


PREVIOUSLY RECORDED IN BOOK _____, PAGE _____
MONUMENT DESCRIPTION AND HOW ESTABLISHED _____

CORNERS TO BE INDEXED

CORNER SECTION TOWNSHIP RANGE

OFFICE FILE NO.

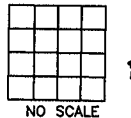


PREVIOUSLY RECORDED IN BOOK _____, PAGE _____
MONUMENT DESCRIPTION AND HOW ESTABLISHED _____

CORNERS TO BE INDEXED

CORNER SECTION TOWNSHIP RANGE

OFFICE FILE NO.



PREVIOUSLY RECORDED IN BOOK _____, PAGE _____
MONUMENT DESCRIPTION AND HOW ESTABLISHED _____

~~I hereby declare that this plat, survey or report was made by me or under my direct personal supervision and that I am a duly registered Land Surveyor under the laws of the State of Iowa.~~

Signed:

SEAL

JONES COUNTY ENGINEER'S OFFICE

19501 HWY. 64,
ANAMOSA, IOWA,
52205 (319)462-3785