

2001 0313

FILED  
RECORDERS OFFICE  
JONES COUNTY IOWA

01 FEB -2 AM 10:06

Prepared by Wm. Burger Land Surveyors

510 3rd Street, Washington, Iowa

Phone 319 - 855 2028

MARIE KRUTZFIELD 6.00Pd  
RECORDER

UNITED STATES PUBLIC LAND SURVEY CORNER CERTIFICATE

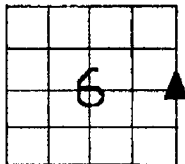
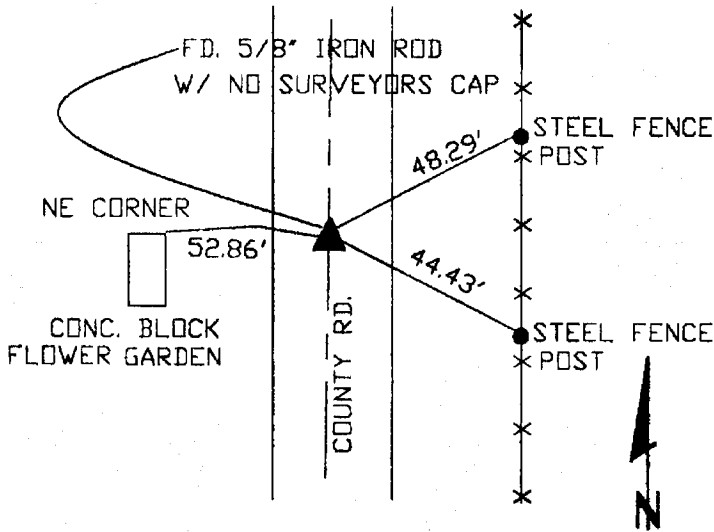
Land Survey Monuments situated in Section 6, Township 86N, Range 1W, of the Fifth Principal Meridian, Jones County, Iowa. Previously recorded in N/A in the Office of the County Recorder

Monument Description and Remarks: (No Corner Certificates found at the County Recorders Office)

E1/4 CORNER - FD. 5/8" IRON ROD W/ NO SURVEYORS CAP

E1/4 CORNER

PLAN VIEW



SEAL

SEC. 6 TWP. 86N RANGE 1W

I hereby certify that this land surveying document was prepared and related survey work was performed by me or under my direct personal supervision and that I am a duly licensed Land Surveyor under the laws of the State of Iowa.

*William H. Burger* 1/31/2001  
Date

William H. Burger  
License number 12642

My license renewal date is December 31, 2002

Pages or Sheets covered by this seal: Sheet 1 of 1

CORNERS TO BE INDEXED

E1/4 CORNER 6 86N 1W