

RECEIVED

OCT 24 2000

JONES COUNTY ENGINEER

Prepared by Wm. Burger Land Surveyors

510 3rd Street West Court, Worthington, Iowa

Phone 319 - 855 2028

UNITED STATES PUBLIC LAND SURVEY CORNER CERTIFICATE

Land Survey Monuments situated in Section 7, Township 86N, Range 1W, of the Fifth Principal Meridian, Jones County, Iowa. Previously recorded in N/A in the Office of the County Recorder

Monument Description and Remarks: (No Corner Certificates found at the County Recorders Office)

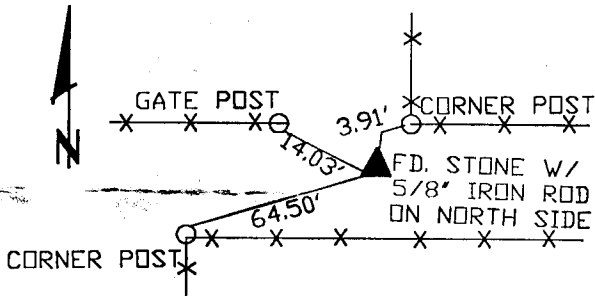
NW CORNER NW1/4 NW FRAC. 1/4 - FD. 2' IRON PIPE BURIED 24" DEEP W/STONE PLACED OVER THE PIPE

NE CORNER NE1/4 NW FRAC. 1/4 - FD. STONE W/ 5/8" IRON ROD ON NORTH SIDE OF STONE

SE CORNER NE1/4 NW FRAC. 1/4 - SET 1/2" IRON ROD W/YELLOW LS CAP #12642 - SET ON LINE AND MIDWAY BETWEEN THE N1/4 CORNER AND THE CENTER OF SECTION

PLAN VIEW

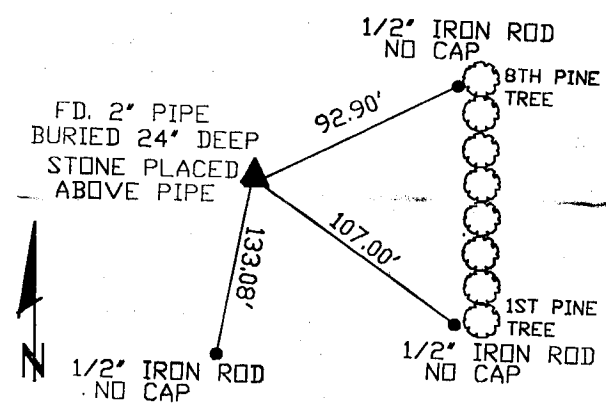
NW CORNER NW1/4 NW FRAC. 1/4



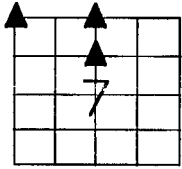
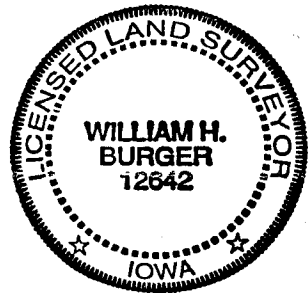
SET "X" NAILS AT ALL TIE POINTS

10.25.2

NW CORNER NW1/4 NW FRAC. 1/4

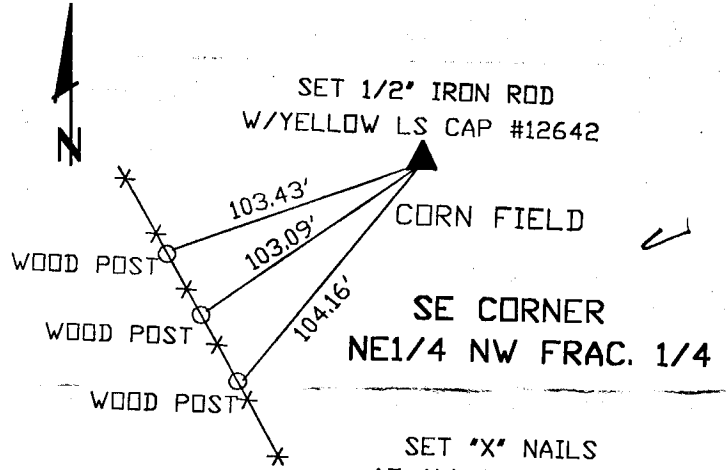


10.25.2



SEAL

SEC. 7 TWP. 86N RANGE 1W



SET "X" NAILS AT ALL TIE POINTS

I hereby certify that this land surveying document was prepared and related survey work was performed by me or under my direct personal supervision and that I am a duly licensed Land Surveyor under the laws of the State of Iowa.

William H. Burger 10/23/2000
Date

License number 12642

My license renewal date is December 31, 2000

Pages or Sheets covered by this seal: Sheet 1 of 1

CORNERS TO BE INDEXED

Table with 4 columns: Corner Description, Section, Township, Range. Rows include NE corner, SE corner, and NW corner.