

THIS IS NOT A CERTIFICATION

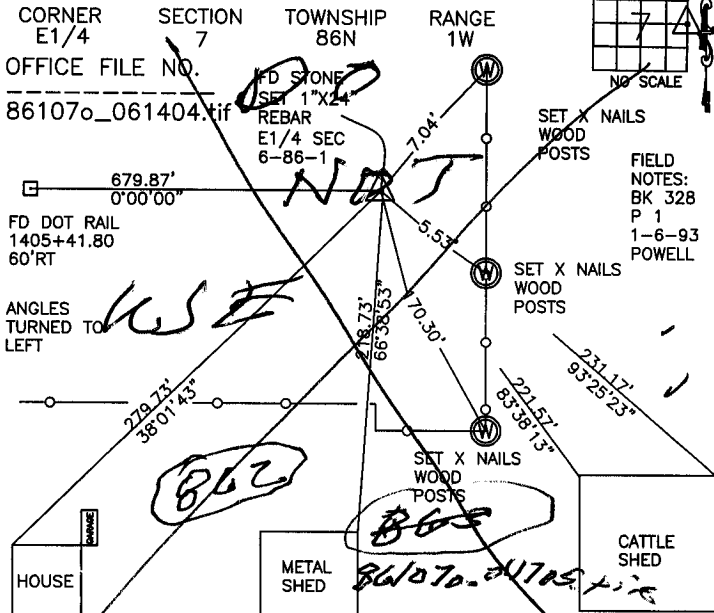
F

JONES COUNTY ENGINEER'S OFFICE, 19501 HWY. 64, ANAMOSA, IOWA, 52205 (319)462-3785

# UNITED STATES PUBLIC LAND SURVEY CORNER CERTIFICATE

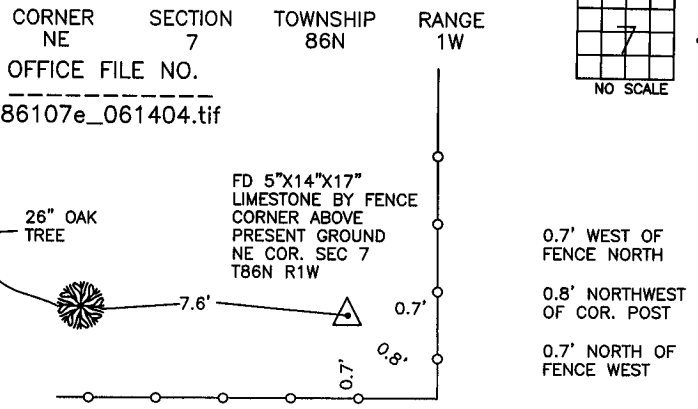
LAND SURVEY MONUMENTS SITUATED IN SECTION 7, TOWNSHIP 86 NORTH, RANGE 1 WEST OF THE 5TH P.M., JONES COUNTY, IOWA

### CORNERS TO BE INDEXED



PREVIOUSLY RECORDED IN BOOK NA, PAGE NA  
 MONUMENT DESCRIPTION AND HOW ESTABLISHED \_\_\_\_\_  
 PER TIES ON FILE AT JONES CO. ENGINEER'S OFFICE FROM LS #10165(MOHN)  
 DATED 9-25-90, FOUND STONE. SET 1"x24" REBAR AND RETIED AS INDICATED.  
 E1/4 SECTION 7 T86N R1W

### CORNERS TO BE INDEXED



FIELD NOTES:  
PROJ C-700  
5-23-86  
POWELL

PREVIOUSLY RECORDED IN BOOK NA, PAGE NA  
 MONUMENT DESCRIPTION AND HOW ESTABLISHED \_\_\_\_\_  
 PER TIES ON RECORD IN JONES CO. ENGINEER'S OFFICE, FOUND 5"x14"x17" LIMESTONE ABOVE GROUND. STONE REFERENCED TO 1939 TIES FOR PROJECT NO. FA-814. TIES AS INDICATED FOR NE CORNER SECTION 7 T86N R1W

### CORNERS TO BE INDEXED



PREVIOUSLY RECORDED IN BOOK \_\_\_\_\_, PAGE \_\_\_\_\_  
 MONUMENT DESCRIPTION AND HOW ESTABLISHED \_\_\_\_\_

### CORNERS TO BE INDEXED



PREVIOUSLY RECORDED IN BOOK \_\_\_\_\_, PAGE \_\_\_\_\_  
 MONUMENT DESCRIPTION AND HOW ESTABLISHED \_\_\_\_\_

~~I hereby declare that this plat, survey or report was made by me or under my direct personal supervision and that I am a duly registered Land Surveyor under the laws of the State of Iowa.~~

Signed: \_\_\_\_\_

SEAL

JONES COUNTY ENGINEER'S OFFICE

19501 HWY. 64,  
ANAMOSA, IOWA,  
52205 (319)462-3785