

1999 3198

FILED
RECORDERS OFFICE
JONES COUNTY IOWA

99 SEP -8 AM 10: 30

MARIE KRUTZFIELD
RECORDER 6.00 pd

PREPARED BY HALL & HALL ENGINEERS, INC. 209 28TH STREET N.E. CEDAR RAPIDS, IOWA 52402 (319) 362-9548

SECTION CORNER CERTIFICATE

OF
LAND SURVEY MONUMENTS SITUATED IN SECTION 8, TOWNSHIP 86 NORTH,
RANGE 1 WEST, OF THE FIFTH PRINCIPAL MERIDIAN, JONES COUNTY, IOWA.

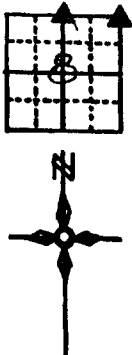
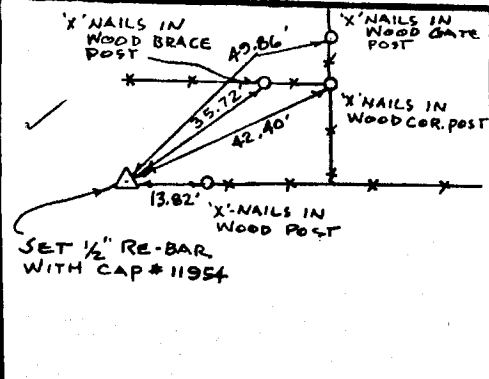
PREVIOUSLY RECORDED IN BOOK _____ AT PAGE _____

MONUMENT DESCRIPTION AND REMARKS:

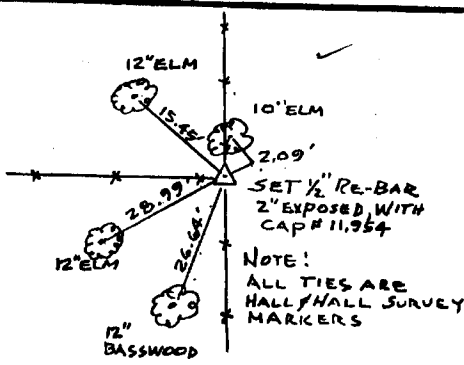
N/4 COR. SET 1/2" RE-BAR, WITH CAP #11954 FLUSH
NE COR. SET 1/2" RE-BAR, 2" EXPOSED, WITH CAP #11954
E/4 COR. SET 1/2" RE-BAR FLUSH, WITH CAP #11954

RECOVERY TIE DRAWING

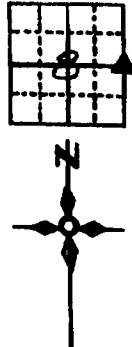
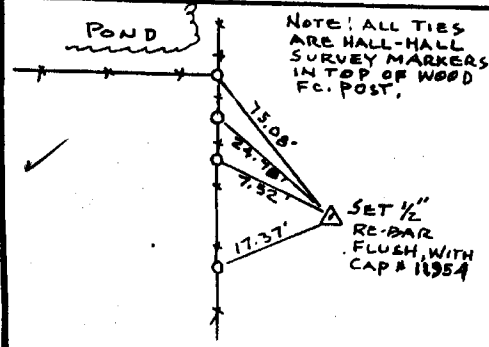
N/4 COR. 8-86-1



NE COR. 8-86-1



E/4 COR. 8-86-1



I hereby certify that this land surveying document was prepared and the related survey work was performed by me or under my direct personal supervision and that I am a duly Licensed Land Surveyor under the laws of the State of Iowa.

By: *[Signature]* Date: 9-8-99
Daniel J. Johnson, L.S. 11954
My license expires on December 31, 2000

Pages or sheets covered by this book:
(Entire submission unless specified here)

REASON FOR PREPARING CERTIFICATE

- A) THERE IS NO CERTIFICATE FOR THE CORNER ON FILE WITH THE RECORDER OF THE COUNTY IN WHICH THE CORNER IS LOCATED
- B) CORNER POSITION DIFFERS FROM THAT SHOWN IN THE PUBLIC RECORDS OF THE COUNTY IN WHICH THE CORNER IS LOCATED
- C) THE CORNER MONUMENT HAS BEEN REPLACED OR MODIFIED
- D) THE REFERENCE TIES REFERRED TO IN AN EXISTING PUBLIC RECORD ARE INCORRECT

| | | |
|---|---|---|
| GOVERNMENT CORNER PROPERTY CORNER FOUND 1/2" 1 3/4" 1/2" LS CAP SET --- (EXISTING FENCE LINE) --- PROPERTY LINE | SHEET FILE NO. <u>US PUBLIC LAND SURVEY RECORD</u> PROJECT FILE NO. <u>JONES COUNTY ENGINEER</u> | HALL AND HALL ENGINEERS, INC. 209 28TH STREET N.E. CEDAR RAPIDS, IOWA 52402 (319) 362-9548 |
| | DRAWN BY <u>DWS</u> CHECKED BY <u>[Signature]</u> DATE <u>1-7-98</u> SCALE <u>NONE</u> | |

