

2000 3651
 FILED
 RECORDERS OFFICE
 JONES COUNTY IOWA

00 NOV 30 AM 10:46

MARIE KRUTZFIELD
 RECORDER 6.00 Pd

Prepared by Wm. Burger Land Surveyors 510 3rd Street West Court, Warthington, Iowa Phone 319 - 855 2020

UNITED STATES PUBLIC LAND SURVEY CORNER CERTIFICATE

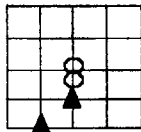
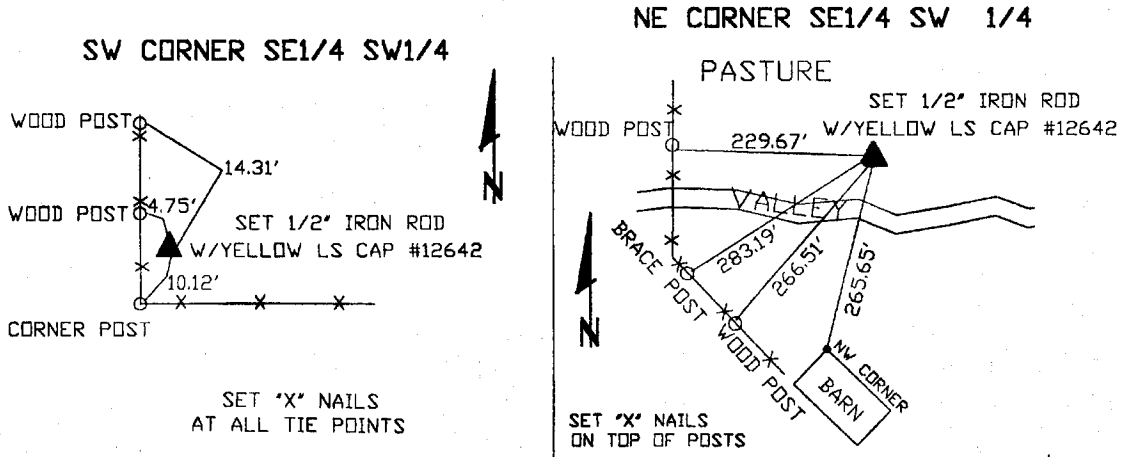
Land Survey Monuments situated in Section 8, Township 86N, Range 1W, of the Fifth Principal Meridian, Jones County, Iowa. Previously recorded in N/A in the Office of the County Recorder

Monument Description and Remarks: (No Corner Certificates Found at the County Recorders Office)

SW CORNER SE1/4 SW1/4 - SET 1/2" IRON ROD W/YELLOW LS CAP #12642 - USED
INFORMATION FROM PLAT LOCATED IN BOOK 293 PAGE 218 IN THE JONES COUNTY
RECORDERS OFFICE

NE CORNER SE1/4 SW1/4 - SET 1/2" IRON ROD W/YELLOW LS CAP #12642 - SET ON LINE
AND MIDWAY BETWEEN THE CENTER OF SECTION AND THE S1/4 CORNER

PLAN VIEW



SEAL SEC. 8 TWP. 86N RANGE 1W

I hereby certify that this land surveying document was prepared and related survey work was performed by me or under my direct personal supervision and that I am a duly licensed Land Surveyor under the laws of the State of Iowa.

William H. Burger 11/27/2000
 William H. Burger Date

License number 12642

My license renewal date is December 31, 2000

Pages or Sheets covered by this seal Sheet 1 of 1

CORNERS TO BE INDEXED

NE CORNER SE1/4 SW1/4 8 86N 1W
 SW CORNER SE1/4 SW1/4 8 86N 1W