

COPY

Jones County, Iowa
 Marie Krutzfield, Recorder
Fee Book 2010 3494

12/14/2010 @11:17AM
 ZSC SEC COR CERT # Pages: 1
 Book: Page:
 Total Fees: \$0.00

PREPARED BY
 CLARENCE J. WALTON, JONES COUNTY ENGINEER'S OFFICE, 19501 HWY. 64, ANAMOSA, IOWA, 52205 (319) 462-3785

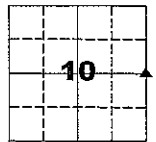
UNITED STATES PUBLIC LAND SURVEY CORNER CERTIFICATE

LAND SURVEY MONUMENTS SITUATED IN SECTION 10, TOWNSHIP 85 NORTH,
 RANGE 3 WEST OF THE 5TH PRINCIPAL MERIDIAN, JONES COUNTY, IOWA.

PROJECT: M-1311
 STATE PLANE COORDINATE
 NAD 83 IOWA NORTH
 N 3539814.47
 E 5552605.64

AN ADDENDUM TO THE CORNER CERTIFICATE
 RECORDED IN RECORDER'S DOCUMENT 2010 3413

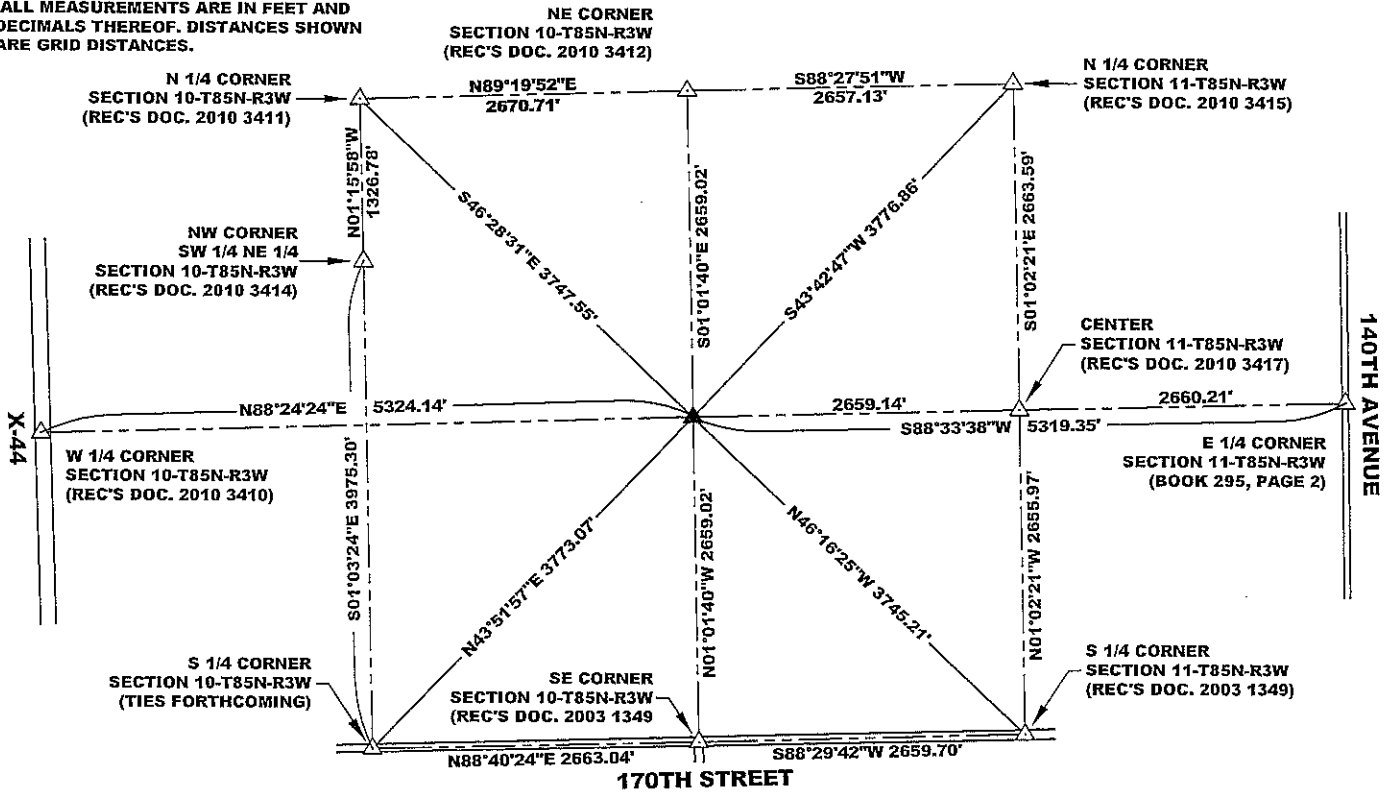
CORNER SECTION TOWNSHIP RANGE
 E 1/4 CORNER 10 T85N R3W



NO SCALE

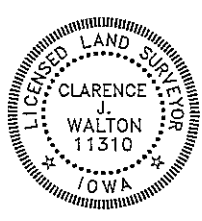
NOTES:

- 1) THE STATE PLANE COORDINATES AS SHOWN ARE FOR CONVENIENCE ONLY. THE TIES AS SHOWN SHOULD BE USED TO REPLACE THE CORNER, IF DESTROYED.
- 2) COORDINATES AS SHOWN ARE GRID COORDINATES AND BASED ON JONES COUNTY G.P.S. CONTROL NETWORK WHICH IN TURN IS BASED ON NAD 83 IOWA NORTH DATUM.
- 3) BASIS OF BEARINGS ARE BASED ON JONES COUNTY G.P.S. CONTROL NETWORK.
- 4) ALL MEASUREMENTS ARE IN FEET AND DECIMALS THEREOF. DISTANCES SHOWN ARE GRID DISTANCES.



PREVIOUSLY RECORDED IN RECORDER'S DOCUMENT 2010 3413
 MONUMENT DESCRIPTION AND HOW ESTABLISHED THIS IS AN ADDENDUM TO THE TIES FILED IN RECORDER'S DOCUMENT 2010 3413 TO AID IN FINDING OR RE-ESTABLISHING THIS CORNER. PLEASE REFER TO RECORDER'S DOCUMENT 2010 3413 FOR NARRATIVE AS HOW THIS MONUMENT WAS SET, WHAT WAS SET, AND OTHER PERTINENT INFORMATION.

FIELD BOOK 437, PAGE 74. DATE OF SURVEY: 11/4/10



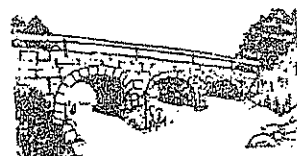
I hereby certify that this land surveying document and the related survey work was performed by me or under my direct personal supervision and that I am a duly registered Land Surveyor under the laws of the State of Iowa.
 Signed: *Clarence J. Walton* 12/14/10
 Clarence J. Walton, L.S.
 My Registration Renewal Date is December 31, 2011
 Iowa License Number 11310
 Pages or sheets covered by this seal: 1 of 1.

- A. THERE IS NO CERTIFICATE FOR THE CORNER ON FILE WITH THE RECORDER OF THE COUNTY IN WHICH THE CORNER IS LOCATED.
- B. THE CORNER MONUMENT HAS BEEN REPLACED OR MODIFIED.
- C. THE SURVEYOR IN RESPONSIBLE CHARGE OF THE LAND SURVEYING ACCEPTS A CORNER POSITION THAT DIFFERS FROM THAT SHOWN IN THE PUBLIC RECORDS OF THE COUNTY IN WHICH THE CORNER IS LOCATED.
- D. THE REFERENCE TIES REFERRED TO IN AN EXISTING PUBLIC RECORD NO LONGER EXIST.
- E. THIS CERTIFICATE TO BE AN ADDENDUM TO CORNER CERTIFICATE FILED IN RECORDER'S DOCUMENT 2010 3413.

CORNERS TO BE INDEXED

CORNER	SECTION	TOWNSHIP	RANGE
E 1/4 CORNER	10	85N	3W
W 1/4 CORNER	11	85N	3W

JONES COUNTY ENGINEER'S OFFICE



19501 HWY. 64, ANAMOSA, IOWA 52205
 (319) 462-3785

COPY

Jones County Iowa
Marie Krutzfield, Recorder
Fee Book 2010 3413

12/09/2010 @12:01PM
ZSC SEC COR CERT
Book: Page:
Total Fees: \$0.00 # Pages: 1

PREPARED BY
CLARENCE J. WALTON, JONES COUNTY ENGINEER'S OFFICE, 19501 HWY. 64, ANAMOSA, IOWA, 52205 (319) 462-3785

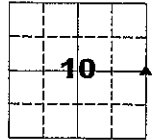
UNITED STATES PUBLIC LAND SURVEY CORNER CERTIFICATE

LAND SURVEY MONUMENTS SITUATED IN SECTION 10, TOWNSHIP 85 NORTH,
RANGE 3 WEST OF THE 5TH PRINCIPAL MERIDIAN, JONES COUNTY, IOWA.

PROJECT: M-1311

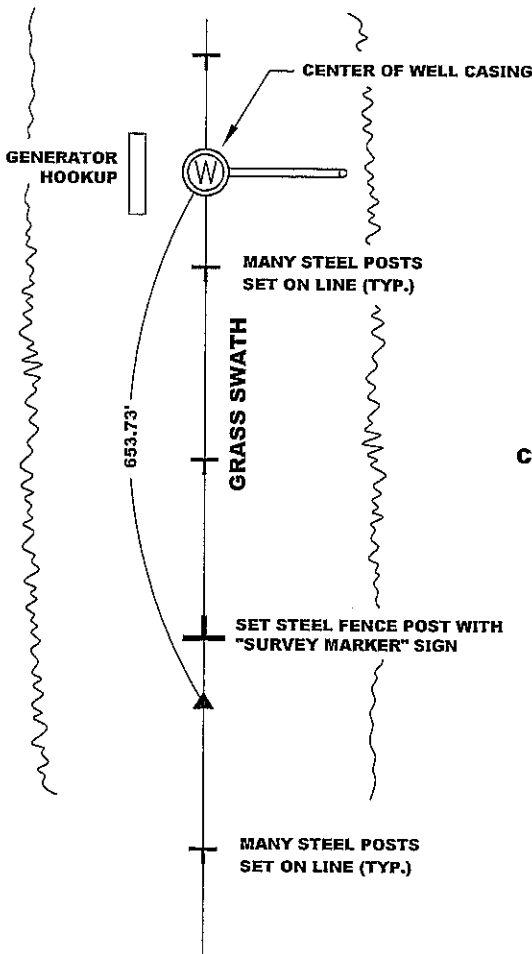
STATE PLANE COORDINATE
NAD 83 IOWA NORTH
N 3539814.47
E 5552605.64

CORNER SECTION TOWNSHIP RANGE
E 1/4 CORNER 10 T85N R3W



NO SCALE

NOTE:
THE STATE PLANE COORDINATE AS
INDICATED IS FOR CONVENIENCE ONLY.
THE TIES AS SHOWN SHOULD BE USED TO
REPLACE THE CORNER, IF DESTROYED



CULTIVATED FIELD

CULTIVATED FIELD

"SURVEY MARKER"
SIGN

PLEASE
PROTECT
NEARBY
**SURVEY
MARKER**
IF LOCATION OF THIS MARK
IS ENDANGERED
PLEASE CONTACT
JONES COUNTY
ENGINEER'S OFFICE
319-462-3785

SURVEY DISC

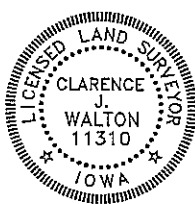


OPC ORANGE PLASTIC CAP
() RECORDED AS

PREVIOUSLY RECORDED IN RECORDER'S DOCUMENT N/A

MONUMENT DESCRIPTION AND HOW ESTABLISHED SET 5/8" X24" REBAR WITH ORANGE PLASTIC CAP #11310 ON LINE AND EQUIDISTANT BETWEEN FOUND 5/8" REBAR WITH YELLOW PLASTIC CAP #14807 AT THE NW CORNER OF SECTION 14-T85N-R3W PER CORNER CERTIFICATE RECORDED IN THE JONES COUNTY, IOWA RECORDER'S DOCUMENT 2003 1349 AND A SET 5/8" X24" REBAR WITH ORANGE PLASTIC CAP #11310 AT THE NE CORNER OF SECTION 10-T85N-R3W. TOP OF REBAR 2" ABOVE PRESENT GROUND SURFACE AS A TOE STUBBER. SET STEEL FENCE POST WITH "SURVEY MARKER" SIGN BY CORNER TO SERVE AS A WITNESS TO THE CORNER AND (HOPEFULLY) OFFER PROTECTION TO THE CORNER. NO OTHER TIES READILY AVAILABLE.

FIELD BOOK 437, PAGE 74. DATE OF SURVEY: 11/4/10



I hereby certify that this land surveying document and the related survey work was performed by me or under my direct personal supervision and that I am a duly registered Land Surveyor under the laws of the State of Iowa.
Signed:

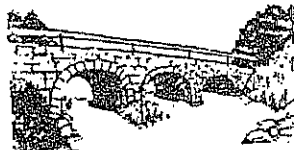
Clarence J. Walton 12/9/10
Clarence J. Walton, L.S.
My Registration Renewal Date is December 31, 2011
Iowa License Number 11310
Pages or sheets covered by this seal: 1 of 1.

- A. THERE IS NO CERTIFICATE FOR THE CORNER ON FILE WITH THE RECORDER OF THE COUNTY IN WHICH THE CORNER IS LOCATED.
- B. THE CORNER MONUMENT HAS BEEN REPLACED OR MODIFIED.
- C. THE SURVEYOR IN RESPONSIBLE CHARGE OF THE LAND SURVEYING ACCEPTS A CORNER POSITION THAT DIFFERS FROM THAT SHOWN IN THE PUBLIC RECORDS OF THE COUNTY IN WHICH THE CORNER IS LOCATED.
- D. THE REFERENCE TIES REFERRED TO IN AN EXISTING PUBLIC RECORD NO LONGER EXIST.

CORNERS TO BE INDEXED

CORNER	SECTION	TOWNSHIP	RANGE
E 1/4 CORNER	10	85N	3W
W 1/4 CORNER	11	85N	3W

JONES COUNTY ENGINEER'S OFFICE



19501 HWY. 64, ANAMOSA, IOWA 52205
(319) 462-3785