

COPY

Jones County, Iowa
 Marie Krutzfield, Recorder
 Fee Book 2010 3412
 12/09/2010 @1200PM
 ZSC SEC COR CERT # Pages: 1
 Book: Page: \$0.00
 Total Fees:

PREPARED BY
 CLARENCE J. WALTON, JONES COUNTY ENGINEER'S OFFICE, 19501 HWY. 64, ANAMOSA, IOWA, 52205 (319) 462-3785

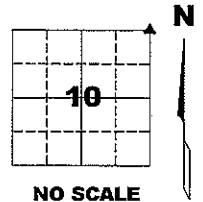
UNITED STATES PUBLIC LAND SURVEY CORNER CERTIFICATE

LAND SURVEY MONUMENTS SITUATED IN SECTION 10, TOWNSHIP 85 NORTH,
 RANGE 3 WEST OF THE 5TH PRINCIPAL MERIDIAN, JONES COUNTY, IOWA.

PROJECT: M-1311

STATE PLANE COORDINATE
 NAD 83 IOWA NORTH
 N 3542473.07
 E 5552557.95

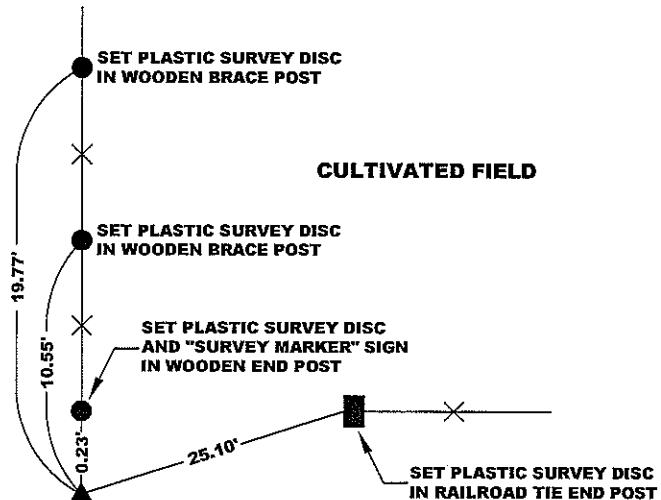
CORNER SECTION TOWNSHIP RANGE
 NE CORNER 10 T85N R3W



NOTE:
 THE STATE PLANE COORDINATE AS
 INDICATED IS FOR CONVENIENCE ONLY.
 THE TIES AS SHOWN SHOULD BE USED TO
 REPLACE THE CORNER, IF DESTROYED

CULTIVATED FIELD

CULTIVATED FIELD



"SURVEY MARKER"
 SIGN

PLEASE
 PROTECT
 NEARBY
**SURVEY
 MARKER**
 IF LOCATION OF THIS MARK
 IS ENDANGERED
 PLEASE CONTACT
 JONES COUNTY
 ENGINEER'S OFFICE
 319-462-3785

SURVEY DISC



CULTIVATED FIELD

OPC ORANGE PLASTIC CAP
 () RECORDED AS

PREVIOUSLY RECORDED IN RECORDER'S DOCUMENT N/A

MONUMENT DESCRIPTION AND HOW ESTABLISHED SET 5/8"X24" REBAR WITH ORANGE PLASTIC CAP #11310 3" ABOVE PRESENT GROUND SURFACE AT INTERSECTION OF FENCE LINES NORTH AND EAST. THIS POSITION CLOSELY (2.20') MATCHES THE DISTANCE OF THE THE NORTH LINE OF THE NE 1/4 OF SECTION 11-T85N-R3W WITH THAT OF THE SURVEY OF PARCELS A & B OF SAID SECTION 11, IN BOOK 300, PAGE 219 IN THE JONES COUNTY, IOWA RECORDER'S OFFICE. THE WOODEN END POST OFFERS THE BEST EVIDENCE AS TO WHERE THIS CORNER MAY HAVE BEEN ORIGINALLY PLACED. NO OTHER EVIDENCE WAS FOUND IN SPITE OF EXTENSIVE PROBING. EXISTING FENCES IN SECTIONS 1, 2, 3, 10, 11, AND 12 OF TOWNSHIP 85 NORTH, RANGE 3 WEST ARE VERY WELL LAID OUT AS TO LINE AND DISTANCE WHICH INCREASES MY CONFORT LEVEL IN SETTING THIS CORNER WHERE I HAVE.

FIELD BOOK 437, PAGE 73. DATE OF SURVEY: 11/8/10



I hereby certify that this land surveying document and the related survey work was performed by me or under my direct personal supervision and that I am a duly registered Land Surveyor under the laws of the State of Iowa.
 Signed: *Clarence J. Walton* 12/9/10
 Clarence J. Walton, L.S.
 My Registration Renewal Date is December 31, 2011
 Iowa License Number 11310
 Pages or sheets covered by this seal: 1 of 1.

- A. THERE IS NO CERTIFICATE FOR THE CORNER ON FILE WITH THE RECORDER OF THE COUNTY IN WHICH THE CORNER IS LOCATED.
- B. THE CORNER MONUMENT HAS BEEN REPLACED OR MODIFIED.
- C. THE SURVEYOR IN RESPONSIBLE CHARGE OF THE LAND SURVEYING ACCEPTS A CORNER POSITION THAT DIFFERS FROM THAT SHOWN IN THE PUBLIC RECORDS OF THE COUNTY IN WHICH THE CORNER IS LOCATED.
- D. THE REFERENCE TIES REFERRED TO IN AN EXISTING PUBLIC RECORD NO LONGER EXIST.

CORNERS TO BE INDEXED

CORNER	SECTION	TOWNSHIP	RANGE
NE CORNER	10	85N	3W
SE CORNER	3	85N	3W
SW CORNER	2	85N	3W
NW CORNER	11	85N	3W

JONES COUNTY ENGINEER'S OFFICE



19501 HWY. 64, ANAMOSA, IOWA 52205
 (319) 462-3785