

COPY

Jones County Iowa  
 Marie Krutzfield, Recorder  
 Fee Book 2010 3415  
 12/09/2010 @1203PM  
 ZSC SEC COR CERT  
 Book: Page: # Pages: 1  
 Total Fees: \$0.00

PREPARED BY  
 CLARENCE J. WALTON, JONES COUNTY ENGINEER'S OFFICE, 19501 HWY. 64, ANAMOSA, IOWA, 52205 (319) 462-3785

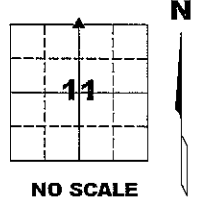
# UNITED STATES PUBLIC LAND SURVEY CORNER CERTIFICATE

LAND SURVEY MONUMENTS SITUATED IN SECTION 11, TOWNSHIP 85 NORTH,  
 RANGE 3 WEST OF THE 5TH PRINCIPAL MERIDIAN, JONES COUNTY, IOWA.

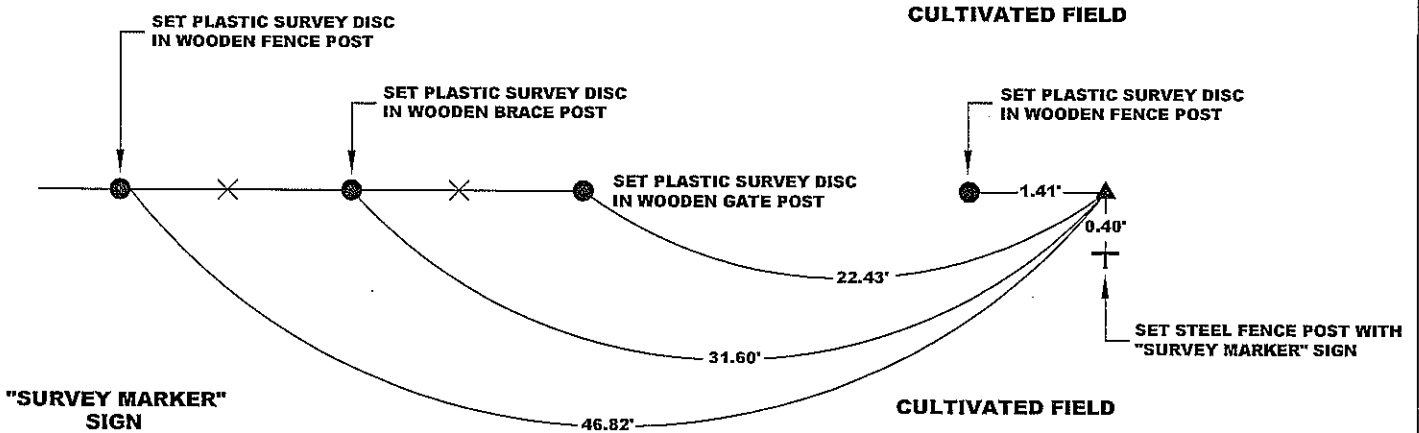
PROJECT: M-1311

STATE PLANE COORDINATE  
 NAD 83 IOWA NORTH  
 N 3542544.42  
 E 5555215.64

CORNER SECTION TOWNSHIP RANGE  
 N 1/4 CORNER 11 T85N R3W



NOTE:  
 THE STATE PLANE COORDINATE AS  
 INDICATED IS FOR CONVENIENCE ONLY.  
 THE TIES AS SHOWN SHOULD BE USED TO  
 REPLACE THE CORNER, IF DESTROYED

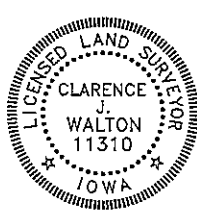


PLEASE  
 PROTECT  
 NEARBY  
**SURVEY  
 MARKER**  
 IF LOCATION OF THIS MARK  
 IS ENDANGERED  
 PLEASE CONTACT  
 JONES COUNTY  
 ENGINEER'S OFFICE  
 319-462-3785



OPC ORANGE PLASTIC CAP  
 ( ) RECORDED AS

PREVIOUSLY RECORDED IN BOOK 331, PAGE 176  
 MONUMENT DESCRIPTION AND HOW ESTABLISHED FOUND 1/2" REBAR WITH YELLOW PLASTIC CAP #8165 3" BELOW PRESENT GROUND SURFACE.  
 CORNER TIES PER BOOK 331, PAGE 176 IN THE JONES COUNTY, IOWA RECORDER'S OFFICE NO LONGER IN EXISTANCE. SET NEW TIES AND TIED CORNER IN  
 WITH STATE PLANE COORDINATES AS FENCE LINE MAY BE TAKEN OUT SOON. SET STEEL FENCE POST WITH "SURVEY MARKER" SIGN TO SERVE AS A  
 WITNESS TO THE CORNER AND (HOPEFULLY) OFFER SOME PROTECTION FOR THE CORNER.  
 FIELD BOOK 437, PAGE 74. DATE OF SURVEY: 11/8/10

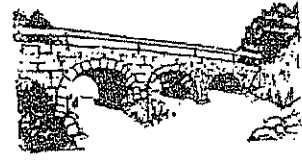


I hereby certify that this land surveying document  
 and the related survey work was performed by me  
 or under my direct personal supervision and that  
 I am a duly registered Land Surveyor under the laws  
 of the State of Iowa.  
 Signed: *Clarence J. Walton* 12/9/10  
 Clarence J. Walton, L.S.  
 My Registration Renewal Date is December 31, 2011  
 Iowa License Number 11310  
 Pages or sheets covered by this seal: 1 of 1.

- A. THERE IS NO CERTIFICATE FOR THE CORNER ON FILE WITH THE RECORDER OF THE COUNTY IN WHICH THE CORNER IS LOCATED.
- B. THE CORNER MONUMENT HAS BEEN REPLACED OR MODIFIED.
- C. THE SURVEYOR IN RESPONSIBLE CHARGE OF THE LAND SURVEYING ACCEPTS A CORNER POSITION THAT DIFFERS FROM THAT SHOWN IN THE PUBLIC RECORDS OF THE COUNTY IN WHICH THE CORNER IS LOCATED.
- D. THE REFERENCE TIES REFERRED TO IN AN EXISTING PUBLIC RECORD NO LONGER EXIST.

CORNERS TO BE INDEXED			
CORNER	SECTION	TOWNSHIP	RANGE
N 1/4 CORNER	11	85N	3W
S 1/4 CORNER	2	85N	3W

## JONES COUNTY ENGINEER'S OFFICE



19501 HWY. 64, ANAMOSA, IOWA 52205  
 (319) 462-3785

# SECTION CORNER CERTIFICATE

OF  
 LAND SURVEY MONUMENTS SITUATED IN SECTION 11, TOWNSHIP 85 NORTH,  
 RANGE 3 WEST, OF THE FIFTH PRINCIPAL MERIDIAN, JONES, COUNTY, IOWA.

PREVIOUSLY RECORDED IN BOOK \_\_\_\_\_ AT PAGE \_\_\_\_\_.

FOR RECORDER'S USE

**REASON FOR PREPARING CERTIFICATE:**

- A) THERE IS NO CERTIFICATE FOR THE CORNER ON FILE WITH THE RECORDER OF THE COUNTY IN WHICH THE CORNER IS LOCATED.
- B) CORNER POSITION DIFFERS FROM THAT SHOWN IN THE PUBLIC RECORDS OF THE COUNTY IN WHICH THE CORNER IS LOCATED.
- C) THE CORNER MONUMENT HAS BEEN REPLACED OR MODIFIED.
- D) THE REFERENCE TIES REFERRED TO IN AN EXISTING PUBLIC RECORD ARE INCORRECT.

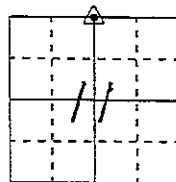
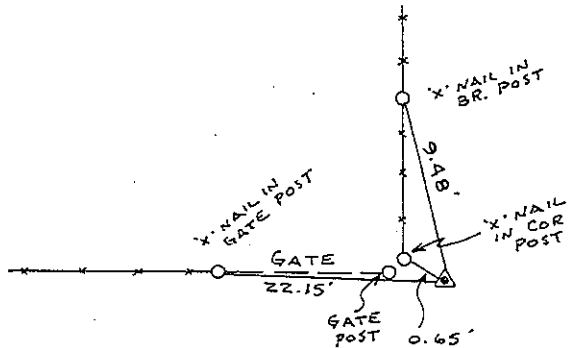
FILED **1811**  
 RECORDERS OFFICE  
 JONES COUNTY IOWA  
 93 JAN -4 AM 11:57  
 BOOK 331 PAGE 176  
 LINDA J. BENDIXEN  
 RECORDER 5.00 p2

**MONUMENT DESCRIPTION AND REMARKS :**

N 1/4 CORNER SECTION 11- T 85 N- R 3 W SET '2" REBAR WITH  
 L.S. CAP # 8165 3" DEEP IN LINE WITH FENCE WEST

## RECOVERY TIE DRAWING

N 1/4 Cor. 11-85-3



NOT TO SCALE

I, GLEN D. MEISNER, - CERTIFY THAT THE CORNER LOCATION(S) SHOWN ON THIS RECORD WERE DETERMINED BY ME OR UNDER MY DIRECTION AND CONTROL AND THAT THIS U.S. PUBLIC LAND SURVEY MONUMENT RECORD IS CORRECT AND COMPLETE TO THE BEST OF MY KNOWLEDGE AND BELIEF.



Glen D. Meisner      4-23-92  
 GLEN D. MEISNER      L.S. NO 8165      DATE

D Z I N I P L	<input type="checkbox"/> GOVERNMENT CORNER <input type="checkbox"/> 5/8" TIE PIN SET --- CENTERLINE - - - EXISTING FENCE LINE - - - R.O.W. LINE	SHEET TITLE: <b>U.S. PUBLIC LAND SURVEY RECORD</b> PROJECT TITLE: <b>GANGWISH SURVEY</b>	<b>HALL AND HALL ENGINEERS, INC.</b> 226 29TH STREET DRIVE S.E. CEDAR RAPIDS, IOWA 52403 319-362-9548
	D W N R. W. B.	T H E G. D. M.	A P P
		SCALE <b>NONE</b>	F B O T <b>22</b>
		P N O <b>4457</b>	

# SECTION CORNER CERTIFICATE

OF  
 LAND SURVEY MONUMENTS SITUATED IN SECTION 11, TOWNSHIP 85 NORTH,  
 RANGE 3 WEST, OF THE FIFTH PRINCIPAL MERIDIAN, JONES, COUNTY, IOWA.

PREVIOUSLY RECORDED IN BOOK \_\_\_\_\_ AT PAGE \_\_\_\_\_ .

FOR RECORDER'S USE

**REASON FOR PREPARING CERTIFICATE:**

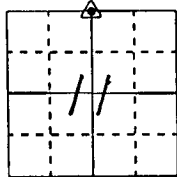
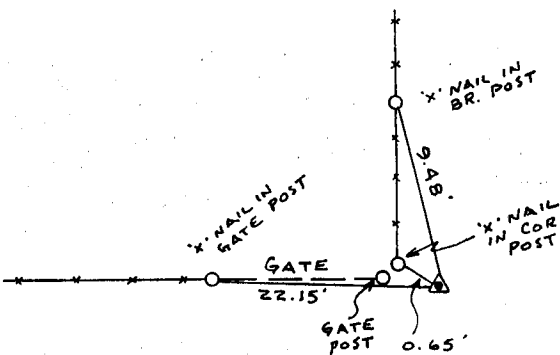
- A) THERE IS NO CERTIFICATE FOR THE CORNER ON FILE WITH THE RECORDER OF THE COUNTY IN WHICH THE CORNER IS LOCATED.
- B) CORNER POSITION DIFFERS FROM THAT SHOWN IN THE PUBLIC RECORDS OF THE COUNTY IN WHICH THE CORNER IS LOCATED.
- C) THE CORNER MONUMENT HAS BEEN REPLACED OR MODIFIED.
- D) THE REFERENCE TIES REFERRED TO IN AN EXISTING PUBLIC RECORD ARE INCORRECT.

**MONUMENT DESCRIPTION AND REMARKS :**

N'4 CORNER SECTION 11- T 85 N- R 3 W SET '2" REBAR WITH  
L.S. CAP # 8165 3" DEEP IN LINE WITH FENCE WEST

## RECOVERY TIE DRAWING

N'4 Cor. 11-85-3



NOT TO SCALE

5-2-93 ON CARD M.

I, GLEN D. MEISNER, - CERTIFY THAT THE CORNER LOCATION(S) SHOWN ON THIS RECORD WERE DETERMINED BY ME OR UNDER MY DIRECTION AND CONTROL AND THAT THIS U.S. PUBLIC LAND SURVEY MONUMENT RECORD IS CORRECT AND COMPLETE TO THE BEST OF MY KNOWLEDGE AND BELIEF.

Glen D. Meisner 4-13-92  
 GLEN D. MEISNER L.S. NO 8165 DATE



D Z R O M L	△ GOVERNMENT CORNER ○ 5/8" TIE PIN SET --- CENTERLINE -x-x- EXISTING FENCE LINE - - - R.O.W. LINE	SHEET TITLE: <b>U.S. PUBLIC LAND SURVEY RECORD</b> PROJECT TITLE: <b>GANGWISH SURVEY</b>	<b>H</b> <b>H</b> <b>H</b>	<b>HALL AND HALL ENGINEERS, INC.</b> 226 29TH STREET DRIVE S.E. CEDAR RAPIDS, IOWA 52403 319-362-9548		
	D W N R. W. B.	C H K G. D. M.		A P P	D A T E 3-20-92	S C A L E N O N E

863 11c-041392