

COPY

Jones County Iowa
Marie Krutzfield, Recorder
Fee Book 2010 3423

12/09/2010 @0144PM
ZSC SEC COR CERT # Pages: 1
Book: Page: Total Fees: \$0.00

PREPARED BY
CLARENCE J. WALTON, JONES COUNTY ENGINEER'S OFFICE, 19501 HWY. 64, ANAMOSA, IOWA, 52205 (319) 462-3785

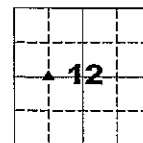
UNITED STATES PUBLIC LAND SURVEY CORNER CERTIFICATE

LAND SURVEY MONUMENTS SITUATED IN SECTION 12, TOWNSHIP 85 NORTH,
RANGE 3 WEST OF THE 5TH PRINCIPAL MERIDIAN, JONES COUNTY, IOWA.

PROJECT: M-1311

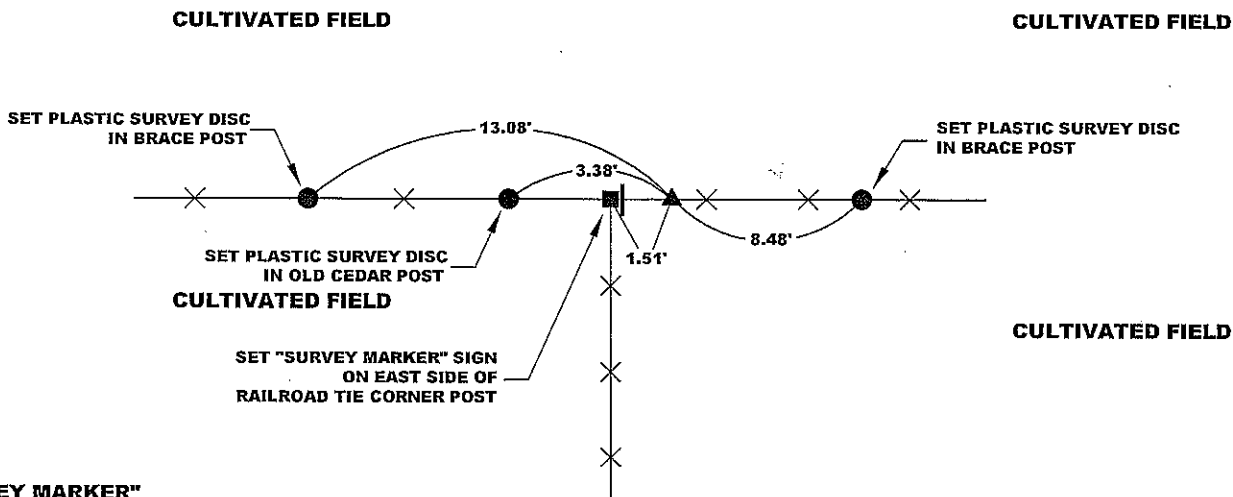
STATE PLANE COORDINATE
NAD 83 IOWA NORTH
N 3539967.48
E 5559268.45

CORNER SECTION TOWNSHIP RANGE
NE CORNER 12 T85N R3W
NW 1/4 SW 1/4

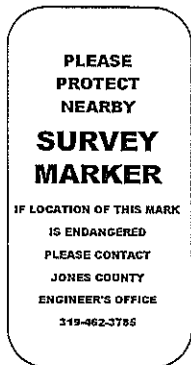


NO SCALE

NOTE:
THE STATE PLANE COORDINATE AS INDICATED IS FOR CONVENIENCE ONLY.
THE TIES AS SHOWN SHOULD BE USED TO REPLACE THE CORNER, IF
DESTROYED



"SURVEY MARKER"
SIGN



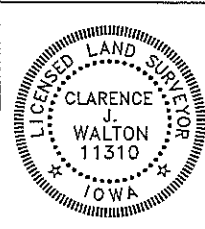
SURVEY DISC



OPC ORANGE PLASTIC CAP
() RECORDED AS

PREVIOUSLY RECORDED IN RECORDER'S DOCUMENT N/A
MONUMENT DESCRIPTION AND HOW ESTABLISHED FOUND EGG SHAPED 12"X9"X7" ORANGE GRANITE STONE LYING FLAT 15" BELOW PRESENT GROUND SURFACE, UNDER FENCE LINE EAST. SET 5/8"X24" REBAR WITH ORANGE PLASTIC CAP #11310 PLUMB AND DIRECTLY ATOP CENTER OF STONE. REBAR IS 9" ABOVE PRESENT GROUND SURFACE. SET "SURVEY MARKER" SIGN ON EAST SIDE OF RAILROAD TIE CORNER POST AS A WITNESS TO STONE.

FIELD BOOK 437, PAGE 76. DATE OF SURVEY: 10/22/10



I hereby certify that this land surveying document and the related survey work was performed by me or under my direct personal supervision and that I am a duly registered Land Surveyor under the laws of the State of Iowa.
Signed: *Clarence J. Walton* 12/9/10
Clarence J. Walton, L.S.
My Registration Renewal Date is December 31, 2011
Iowa License Number 11310
Pages or sheets covered by this seal: 1 of 1.

- A. THERE IS NO CERTIFICATE FOR THE CORNER ON FILE WITH THE RECORDER OF THE COUNTY IN WHICH THE CORNER IS LOCATED.
- B. THE CORNER MONUMENT HAS BEEN REPLACED OR MODIFIED.
- C. THE SURVEYOR IN RESPONSIBLE CHARGE OF THE LAND SURVEYING ACCEPTS A CORNER POSITION THAT DIFFERS FROM THAT SHOWN IN THE PUBLIC RECORDS OF THE COUNTY IN WHICH THE CORNER IS LOCATED.
- D. THE REFERENCE TIES REFERRED TO IN AN EXISTING PUBLIC RECORD NO LONGER EXIST.

CORNERS TO BE INDEXED			
CORNER	SECTION	TOWNSHIP	RANGE
NE CORNER	12	85N	3W
NW 1/4 SW 1/4			
SE CORNER	12	85N	3W
SW 1/4 NW 1/4			
SW CORNER	12	85N	3W
SE 1/4 NW 1/4			
NW CORNER	12	85N	3W
NE 1/4 SW 1/4			

JONES COUNTY ENGINEER'S OFFICE



19501 HWY. 64, ANAMOSA, IOWA 52205
(319) 462-3785