

COPY

Jones County Iowa
Marie Krutzfield, Recorder
Fee Book 2010 3418

12/09/2010 @0138PM
ZSC SEC COR CERT
Book: Page: # Pages: 1
Total Fees: \$0.00

PREPARED BY
CLARENCE J. WALTON, JONES COUNTY ENGINEER'S OFFICE, 19501 HWY. 64, ANAMOSA, IOWA, 52205 (319) 462-3785

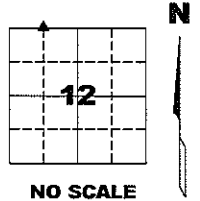
UNITED STATES PUBLIC LAND SURVEY CORNER CERTIFICATE

LAND SURVEY MONUMENTS SITUATED IN SECTION 12, TOWNSHIP 85 NORTH,
RANGE 3 WEST OF THE 5TH PRINCIPAL MERIDIAN, JONES COUNTY, IOWA.

PROJECT: M-1311

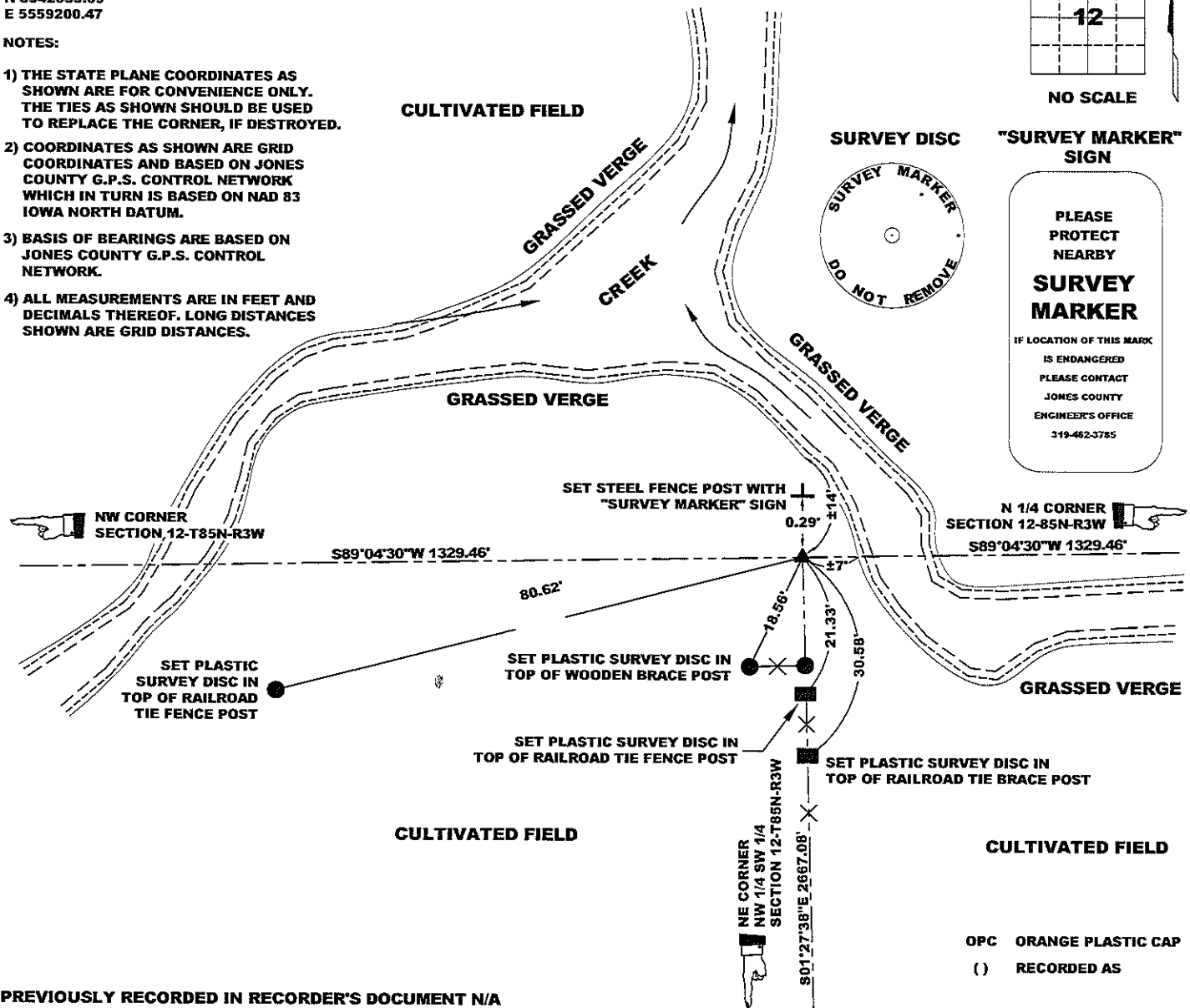
STATE PLANE COORDINATE
NAD 83 IOWA NORTH
N 3542633.69
E 5559200.47

CORNER NE CORNER SECTION 12 T85N R3W
NW 1/4 NW 1/4



NOTES:

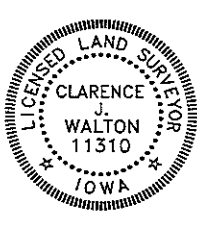
- 1) THE STATE PLANE COORDINATES AS SHOWN ARE FOR CONVENIENCE ONLY. THE TIES AS SHOWN SHOULD BE USED TO REPLACE THE CORNER, IF DESTROYED.
- 2) COORDINATES AS SHOWN ARE GRID COORDINATES AND BASED ON JONES COUNTY G.P.S. CONTROL NETWORK WHICH IN TURN IS BASED ON NAD 83 IOWA NORTH DATUM.
- 3) BASIS OF BEARINGS ARE BASED ON JONES COUNTY G.P.S. CONTROL NETWORK.
- 4) ALL MEASUREMENTS ARE IN FEET AND DECIMALS THEREOF. LONG DISTANCES SHOWN ARE GRID DISTANCES.



PREVIOUSLY RECORDED IN RECORDER'S DOCUMENT N/A

MONUMENT DESCRIPTION AND HOW ESTABLISHED SET 5/8"X48" REBAR WITH ORANGE PLASTIC CAP #11310 3" ABOVE GROUND SURFACE ON LINE AND EQUIDISTANT BETWEEN THE N 1/4 CORNER OF SECTION 12-T85N-R3W AND THE NW CORNER OF SAID SECTION 12. CORNER IS OVER THE TOP OF THE S-LY BANK OF CREEK ON A LOWER SHELF OF THE BANK. SET STEEL FENCE POST WITH "SURVEY MARKER" SIGN 0.29' NORTH OF CORNER AS A WITNESS TO THE SECTION CORNER. THIS CORNER WILL BE SUBJECT TO EROSION BY A CREEK.

FIELD BOOK 437, PAGE 73. DATE OF SURVEY: 11/8/10



I hereby certify that this land surveying document and the related survey work was performed by me or under my direct personal supervision and that I am a duly registered Land Surveyor under the laws of the State of Iowa.
Signed: *Clarence J. Walton* 12/9/10
Clarence J. Walton, L.S.
My Registration Renewal Date is December 31, 2011
Iowa License Number 11310
Pages or sheets covered by this seal: 1 of 1.

- A. THERE IS NO CERTIFICATE FOR THE CORNER ON FILE WITH THE RECORDER OF THE COUNTY IN WHICH THE CORNER IS LOCATED.
- B. THE CORNER MONUMENT HAS BEEN REPLACED OR MODIFIED.
- C. THE SURVEYOR IN RESPONSIBLE CHARGE OF THE LAND SURVEYING ACCEPTS A CORNER POSITION THAT DIFFERS FROM THAT SHOWN IN THE PUBLIC RECORDS OF THE COUNTY IN WHICH THE CORNER IS LOCATED.
- D. THE REFERENCE TIES REFERRED TO IN AN EXISTING PUBLIC RECORD NO LONGER EXIST.

CORNER	CORNERS TO BE INDEXED		
	SECTION	TOWNSHIP	RANGE
NE CORNER	12	85N	3W
NW 1/4 NW 1/4	12	85N	3W
NW CORNER	12	85N	3W
NE 1/4 NW 1/4	1	85N	3W
SE CORNER	1	85N	3W
SW 1/4 SW 1/4	1	85N	3W
SW CORNER	1	85N	3W
SE 1/4 SW 1/4	1	85N	3W

JONES COUNTY ENGINEER'S OFFICE



19501 HWY. 64, ANAMOSA, IOWA 52205
(319) 462-3785